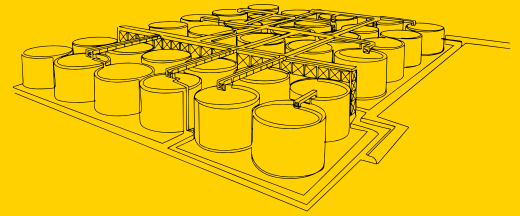


INDUSTRIAL RENTAL EQUIPMENT

Providing the most reliable rental equipment with a huge fleet of inventory for downstream repairs & maintenance.

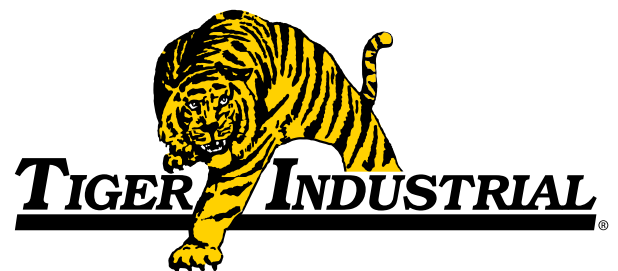


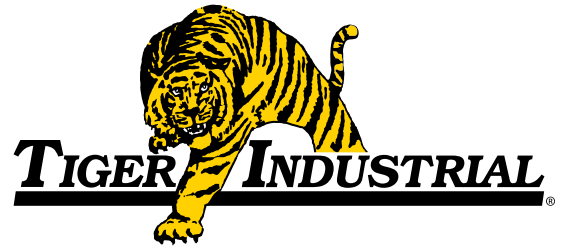
TANK FARM CATALOG



Minimizing your tank farm
maintenance downtime.

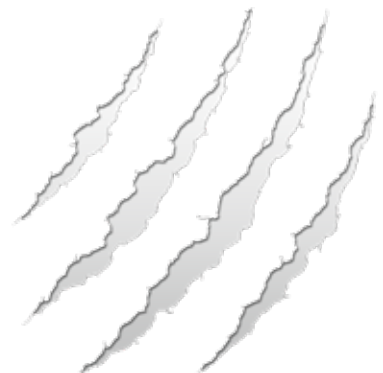
That's the mark of Tiger.





CONTENT

Tank Farm Rental Package Overview	4
Mats	00
Pumps	00
HP Cleaning Equipment	00
Generators	00
Lights	00
Tanks	00
Compressors	00
Manifolds	00
Containment Berms	00



SCAN to view the
our capabilities video



□ TIGER'S 500 BBL COAST GUARD CERTIFIED INDEPENDENT CARGO TRANSPORT TANKS IN THE GULF OF MEXICO.

“**Delivering
real value
for your
operations.**”



PUMPS



8

25

6

12

26

18

16

SKIPS



24

28

15

5

19

2

ECOMAT



1

PRESSURE WASHERS



13

9

10

22



SPECIALTY PUMPS




LIGHT TOWERS



GENERATORS



BLAST RESISTANT BUILDINGS



TIGER INDUSTRIAL

TANK FARM RENTAL PACKAGE

1. 8' x 16' ECOMats™	14. 25 kVA Generator
2. 12' x 40' Blast Resistant Building	15. 45 kVA Generator
3. Multiplex Building	16. 85 kVA Generator
4. 8' x 40' Blast Resistant Building	17. 125 kVA Generator
5. 8' x 40' Tool Room	18. 150 kVA Generator
6. 8' x 40' Decon Unit	19. 220 kVA Generator
7. 8' x 40' Multi-Bath Unit	20. 300 kVA Generator
8. 8' x 20' Blast Resistant Building	21. 4K Light Tower
9. 6" Vac Assist Pump	22. LED Light Tower
10. 8" Vac Assist Pump	23. 528 Gal Fuel Tank
11. 6" Trash Pump	24. 550 Gal Transport Tank
12. 6" High Head Pump	25. 4K Pressure Washer
13. Containment Berm	26. Myers Pump
	27. Hydroblaster
	28. Skip Pan



S

27

11

17

21

3

7

20

8

23

14

4



DURABLE

BEST-IN-CLASS SITE ACCESS

GAME-CHANGING MAT SOLUTIONS

Nobody can move mats like Tiger! Our mats have distinct individual advantages to fit your specific needs. When you partner with Tiger, you get a highly skilled team who can offer assistance in selecting the right mat for the right job. If you have a preference for a specific mat, tell us what you want and we will get it to you - ASAP. Call us today for more details.

MATS:

- ECOmats™
- T&D Mats

SAFER | MAXIMUM DURABILITY | LONG LASTING

ECOMats™ stay on the job longer and saves both replacement and transport costs. Able to haul up to 15/16 ECOMats™ per load. That means fewer trips, fewer trucks, fewer drivers, a lot less fuel and a lot more savings.



▶ TECHNICAL DATA

ECOMATS™	
L x W x H	8' X 16' X 4"
Square Footage	128 sf
Weight	3,000 lbs
PSI	3,910
Connecting	Directly
Linear Ft/Truck	112
Mats/Truck	14-15
Construction	HDPE+



▶ ADVANTAGES

- Maximum Durability
- Extreme Life
- Very Contractor Friendly
- Fast & Easy to Lay
- Traceable with RFID Chip
- Unbeatable High PSI
- Traction
- No Nails
- No Cable Loops
- No Pinning Required
- Flame Spread Rated
- No Absorption & Won't Float
- Repairable

MATS





TIGER T&D MATS

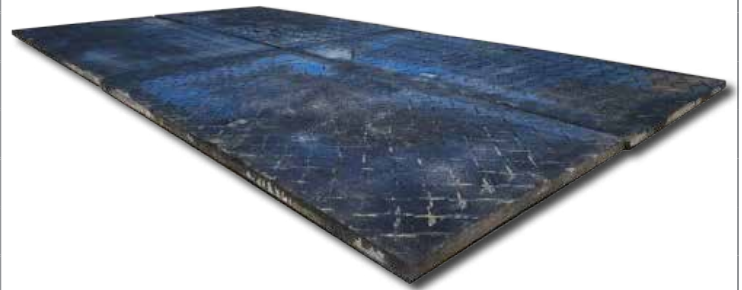
RELIABLE MATTING SOLUTIONS

Tiger's T&D Mats are a great solution for tank farm temporary roadways. Our composite mats are durable, heavy-duty and reliable for temporary roadways providing stability for vehicles and equipment.

▶ TECHNICAL DATA

TRANSMISSION & DISTRIBUTION (T&D) MATS

L x W x H	7.5' X 14' X 4"
Square Footage	105 sf
Weight	3,000 lbs
PSI	3,910
Connecting	None
Construction	Recycled Rubber Tires
Mats/Truck	15



▶ ADVANTAGES

- Tiger's T&D Mats are an excellent replacement for 3-ply wood laminate mats
- No rot, no gaps, and no nails
- Very uniform surface
- Safer
- Easy handling
- Able to transport 15 mats per truck load
- Flexible to conform to ground conditions
- Resilient to absorbing liquids
- Traction control
- Environmentally friendly
- A single mat is made from approximately 165 recycled rubber tires







POWERFUL

DOWNSTREAM SOLUTIONS

HIGHEST QUALITY AND PERFORMANCE

We keep a large fleet of pumps that vary immensely in horsepower, dimensions and configurations prepped for immediate deployment at all times. Every piece of equipment we offer is put through a rigorous maintenance regimen to ensure the highest quality and performance.

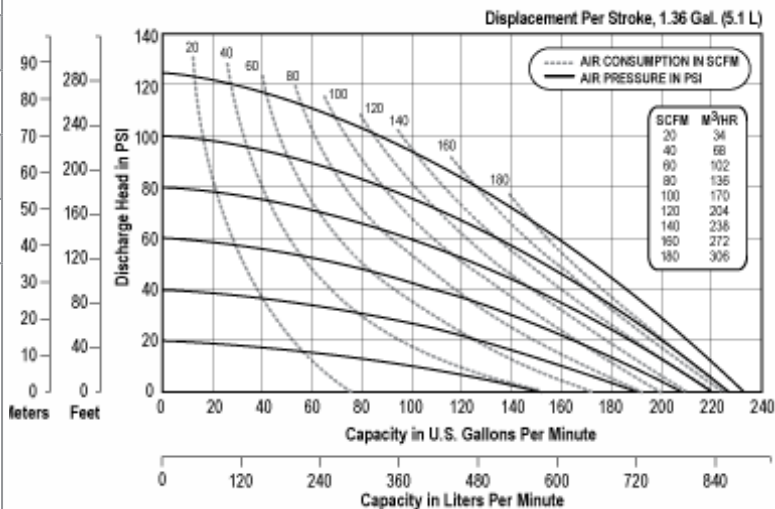
Our knowledgeable personnel will help you select the right pump for the job, and we're available around the clock to offer any support you may need.

PUMPS, SPECIALTY PUMPS & PRESSURE WASHERS

- Trash Pumps
- Centrifugal Pumps
- Water Transfer Pumps
- Vac Assist Pumps
- Air-Operated Pumps
- Diesel & Electric Pumps
- Boiler Water Feed Pumps
- Multi-stage Centrifugal Pumps
- Fire Suppression Pumps
- Cooling Tower Supply Pumps
- Fluid Transfer Pumps
- Tank Cleaning Pumps
- Pipeline Fill and Test Pumps

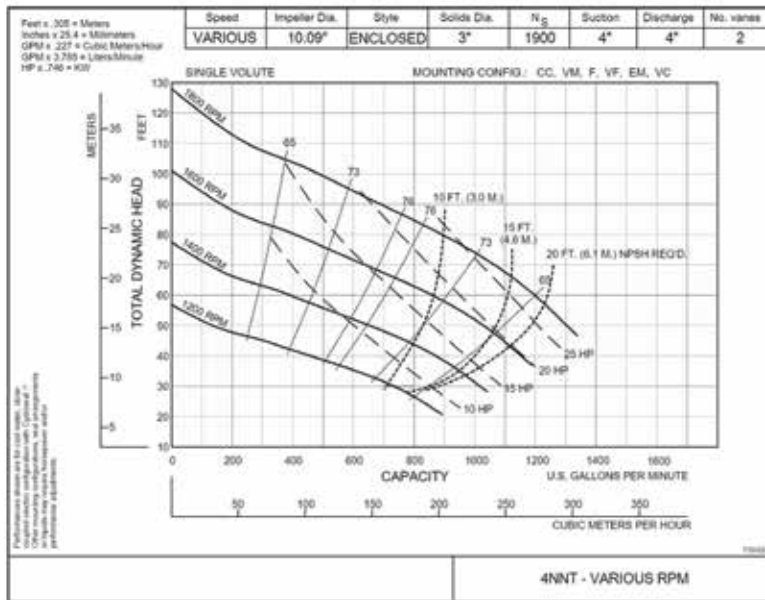
2 & 3" AIR DIAPHRAGM PUMP

Horsepower	N/A - Air
Fuel Tank Capacity	N/A
Max Flow	240 GPM @ 10 PSI
Max TDH	120 PSI @ 20 GPM
BEP	N/A



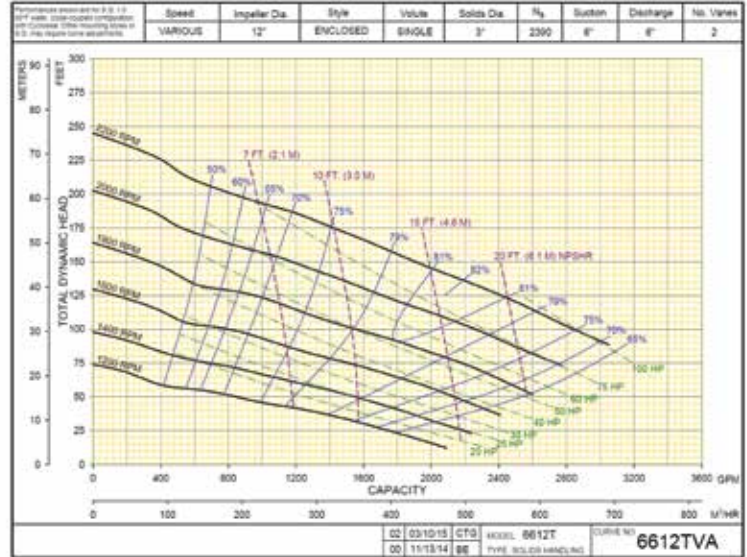
4" X 4" VAC ASSIST PUMP (4NNT)

Horsepower	49 HP
Fuel Tank Capacity	96 GAL
Max Flow	1340 GPM @ 46'TDH/20 PSI
Max TDH	120' TDH/52 PSI @100 GPM
BEP	840 GPM @ 82' TDH / 35 PSI
Max Temperature	180° F



6" X 6" DIESEL VAC ASSIST PUMP (6612T)

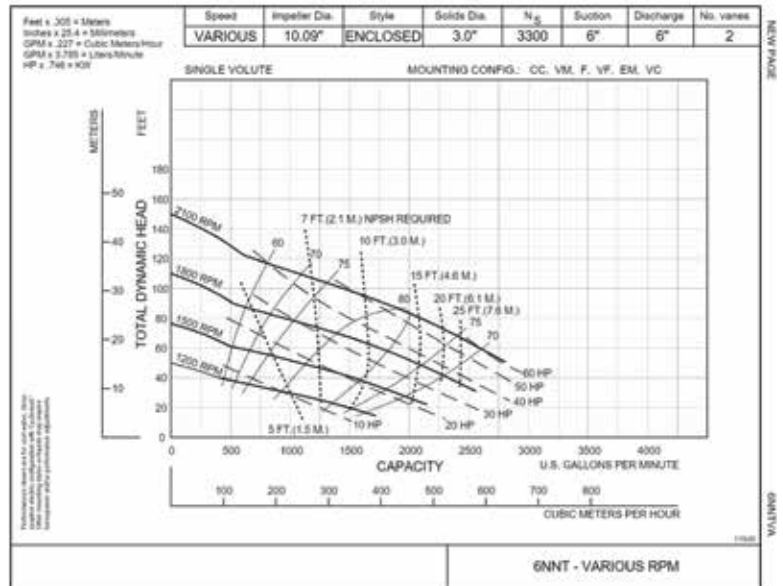
Horsepower	74 HP
Fuel Tank Capacity	96 GAL
Max Flow	2750 GPM @ 75' TDH / 33 PSI
Max TDH	190' TDH/82 PSI @ 1000 GPM
BEP	2100 GPM @ 115' TDH/50 PSI
Max Temperature	180° F



[PUMPS]

6" X 6" VAC ASSIST PUMP (6NNT)

Horsepower	74 HP
Fuel Tank Capacity	96 GAL
Max Flow	2800 GPM @ 52' TDH/23 PSI
Max TDH	140' TDH/60 PSI @ 250 GPM
BEP	1900 GPM @ 85' TDH / 37 PSI
Max Temperature	180° F

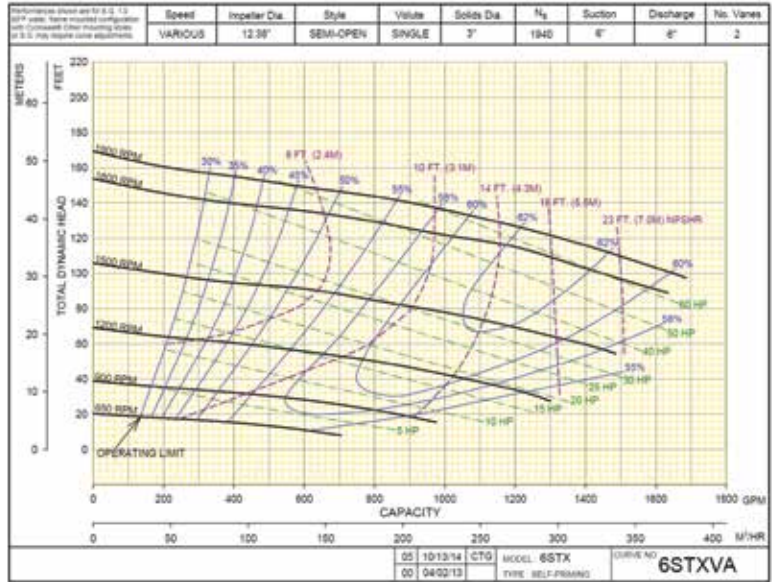


PUMPS



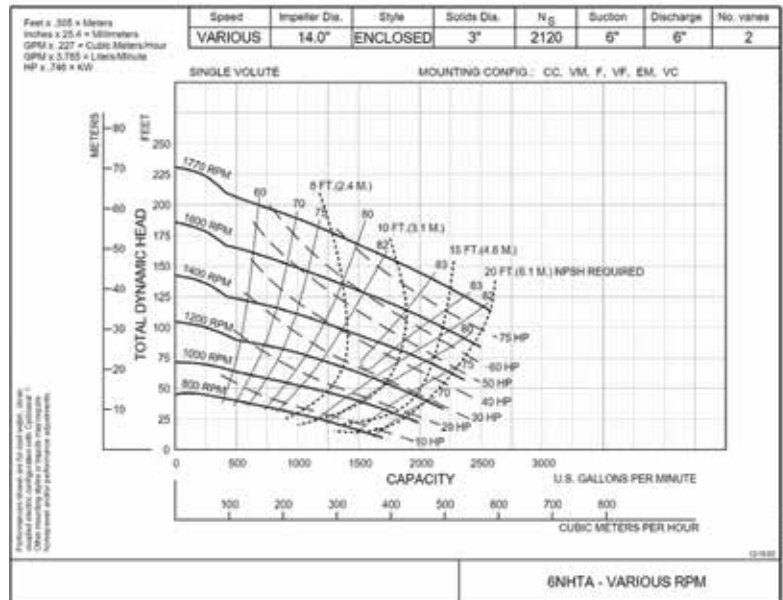
6" X 6" WET PRIME TRASH PUMPS (6STX)

Horsepower	74 HP
Fuel Tank Capacity	96 GAL
Max Flow	1690 GPM @ 95' TDH/41 PSI
Max TDH	160' TDH/69 PSI @ 200 GPM
BEP	1350 GPM @ 120' TDH/52 PSI
Max Temperature	180° F



SUPER 6 - 6" X 6" DIESEL VAC ASSIST PUMP (6NHTA)

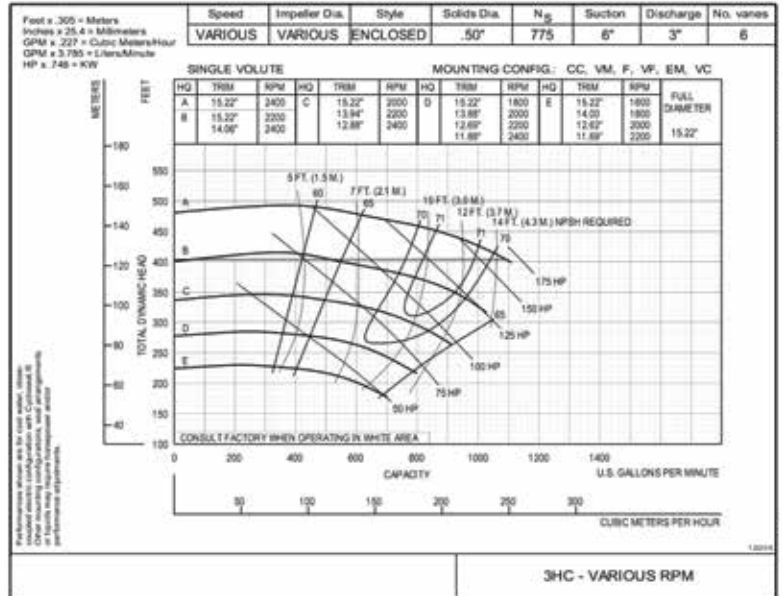
Horsepower	125 HP
Fuel Tank Capacity	96 GAL
Max Flow	2900 GPM @ 145' TDH / 63 PSI
Max TDH	285' TDH/124 PSI @ 250 GPM
BEP	2500 GPM @ 170' TDH/74 PSI
Max Temperature	180° F



[PUMPS]

6" X 3" HIGH HEAD VAC ASSIST PUMP (3HC)

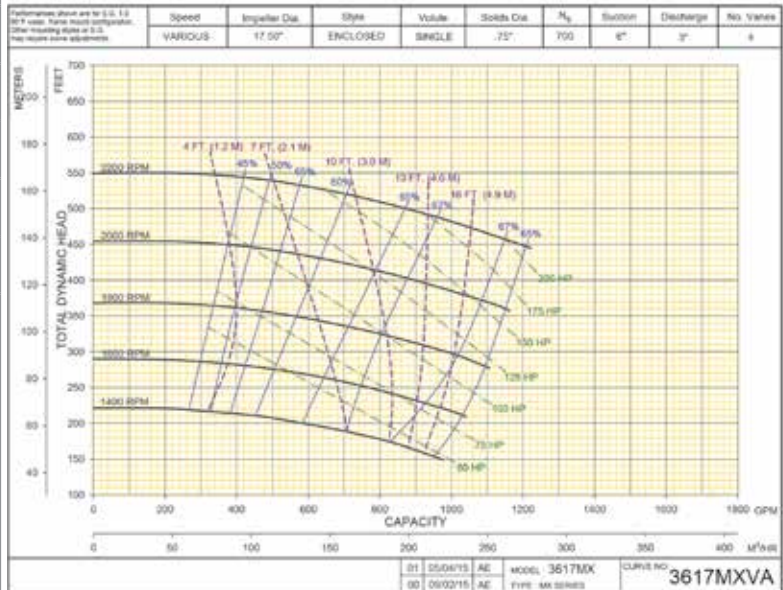
Horsepower	125 HP
Fuel Tank Capacity	96 GAL on Single Axle Pkg
Max Flow	1400 GPM @ 290' TDH/125 PSI
Max TDH	400' TDH/173 PSI @ 500 GPM
BEP	875 GPM @ 360' TDH/156 PSI
Max Temperature	180° F



[PUMPS]

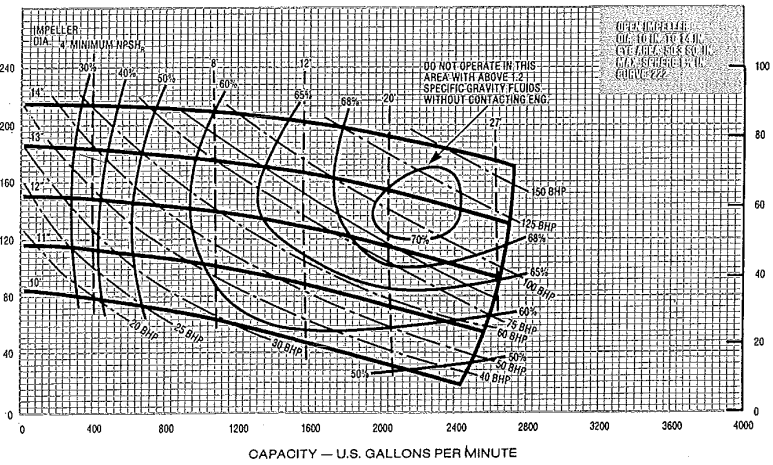
SUPER 6" X 3" VAC ASSIST PUMP (3617MX)

Horsepower	174 HP
Fuel Tank Capacity	96 GAL
Max Flow	1200 GPM @ 380' TDH / 165 PSI
Max TDH	550' TDH/238 PSI @ 100 GPM
BEP	1000 GPM @ 400' TDH/173 PSI
Max Temperature	180° F



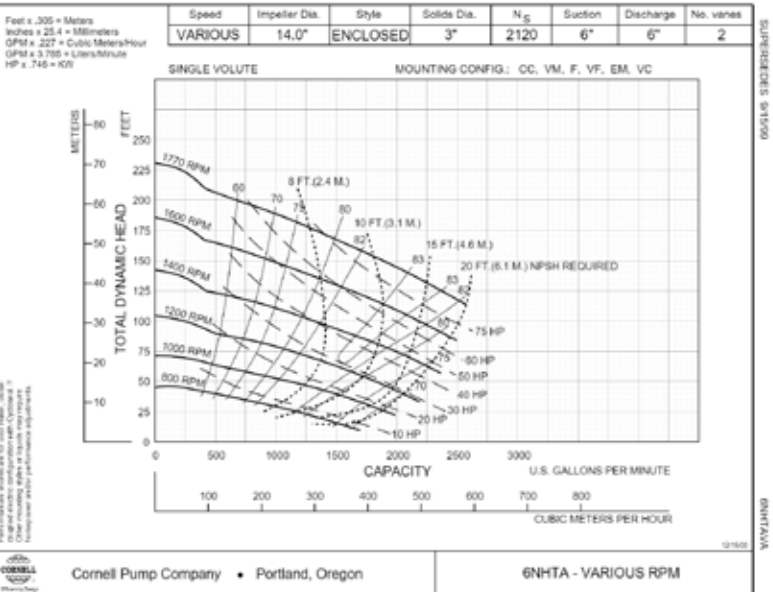
8" X 6" X 14" CENTRIFUGAL DIESEL PUMP

Horsepower	174 HP
Fuel Tank Capacity	380 GAL
Max Flow	2600 GPM @ 190' TDH / 82 PSI
Max TDH	220' TDH / 95 PSI @ 200 GPM
BEP	2000 GPM @ 150' TDH / 65 PSI
Max Temperature	180° F



MEDIUM-HEAD CENTRIFUGAL PUMP (6NHTB)

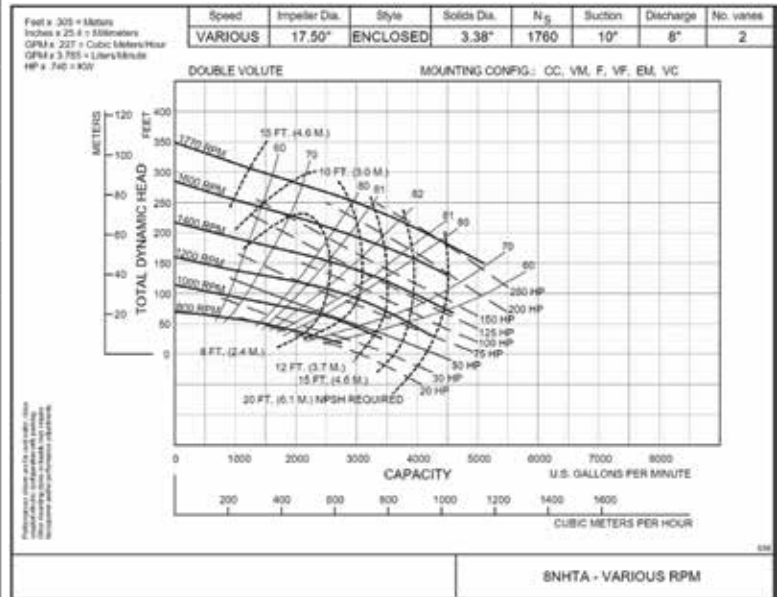
Horsepower	300 HP
Fuel Tank Capacity	96 GAL
Max Flow	5400 GPM @ 150' TDH / 65 PSI
Max TDH	300' TDH/130 PSI @ 1400 GPM
BEP	INSERT
Max Temperature	180° F



[PUMPS]

325 HP MEDIUM HEAD 10" X 8" PUMP (8NHTA)

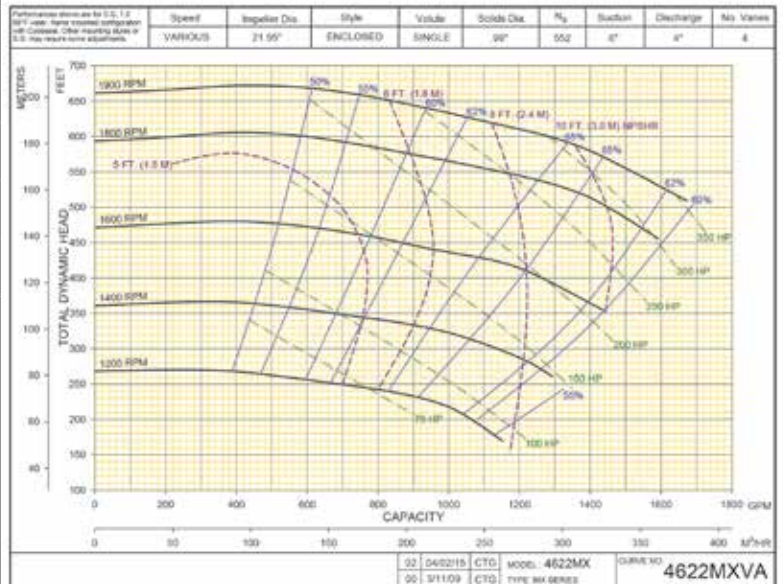
Horsepower	325 HP
Fuel Tank Capacity	160 GAL
Max Flow	5100 GPM @ 150' TDH/65 PSI
Max TDH	350' TDH/152 PSI @ 500 GPM
BEP	3900 GPM @ 240' TDH/104 PSI
Max Temperature	180° F



[SPECIALTY PUMPS]

6" X 4" HIGH HEAD VAC ASSIST PUMP (4622MX)

Horsepower	325 HP
Fuel Tank Capacity	250 GAL
Max Flow	1650 GPM @ 460' TDH / 200 PSI
Max TDH	625' TDH/270 PSI @ 200 GPM
BEP	N/A
Max Temperature	180° F



SPECIALTY PUMPS



FMC TRIPLEX PUMP (1636DI)

Model	FMC 1636DI Bean Pump
Horsepower	325 HP
Fuel Capacity	
Max Flow	300 GPM @ 300 PSI
Max Pressure	300 PSI TDH/693 FT
Max Temperature	160°F / 71°C



FMC TRIPLEX PUMP (1624DI)

Model	FMC 1624DI Bean Pump
Horsepower	325 HP
Fuel Capacity	
Max Flow	150 GPM @ 1400 PSI
Max Pressure	1400 PSI TDH/3234 FT
Max Temperature	160°F / 71°C

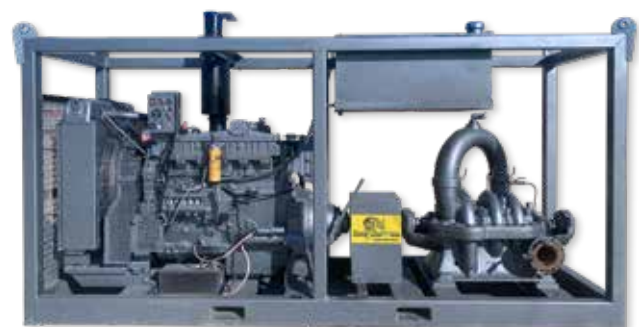


[SPECIALTY PUMPS]

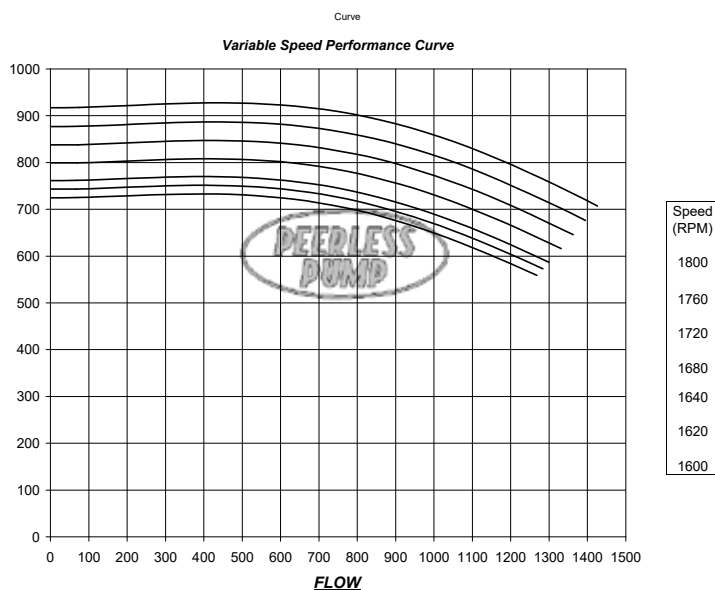
STUT-16 THREE FILL STAGE PUMP OR 3 STAGE CENTRIFUGAL PUMP - 1636DI

Horsepower	425 HP
Fuel Tank Capacity	50 Gallons
Max Flow	1,400 GPM @ 720' TDH/311 PSI
Max TDH	924' TDH/400 PSI @ 500 GPM
BEP	1,200 GPM @ 800' TDH/346 PSI
Max Temperature	180° F

* Can Achieve Higher Flows and Pressure with Low Head Pump in Series



TDH



1/5/2010

STUT16N3-US-3194-16-SpeedChange.xls

1



**Minimizing your tank farm
maintenance downtime
with Tiger's **EC0mats**.**

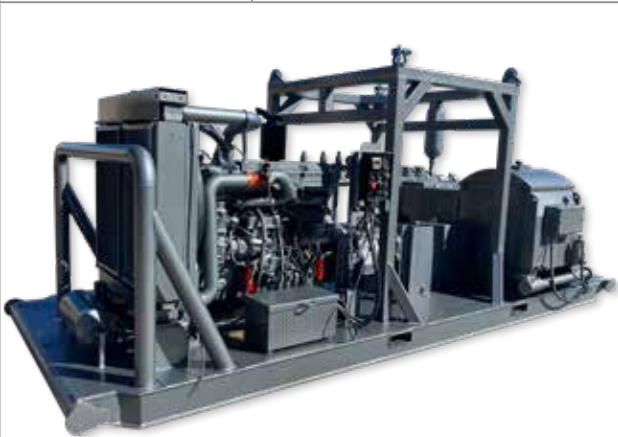


TIGER INDUSTRIAL

RESPONSIVE. AVAILABLE. RELIABLE.

TRIPLEX PISTON PUMP - EWS RS440

Horsepower	440 HP
Fuel Tank Capacity	100 GAL
Max Flow	397 GPM
Max TDH & BEP	Varies depending on liners
Max Temperature	190°F / 87°C



The W-440 pump is unitized with a series 60, Tier 3 Detroit engine, 10 speed manual transmission, max flow 392 gpm with 4.5" piston.

- Pump Speed Rating - 320 Max
- Available with Piston Sizes 3", 4" and 4.5"
- Fluid End Working Pressure Rating add 5,000 psi Max
- Discharge Connection Size - 6"
- Accessory Connection Size - 2" NPT or 2" Union
- Valve Size - API #4
- Piston Rod End - API #SA-4
- Crankcase Oil Capacity - 35 gallon
- Liner Wash Capacity - 24 gallon
- Internal Gear Ratio - 4.58:1
- Length/Width/Height 20' x 3.3' x 8'
- Height - 7.8' at the Tallest Part
- 10 Speed Manual Transmission

Liner Size	GPM	GPS	Max PSI
3" Piston	14-175 GPM	.552 gps	5000 psi
4" piston	25-310 GPM	.978 gps	3100 psi
4.5" piston	32-392 GPM	1.239 GPS	2400 psi

[SPECIALTY PUMPS]

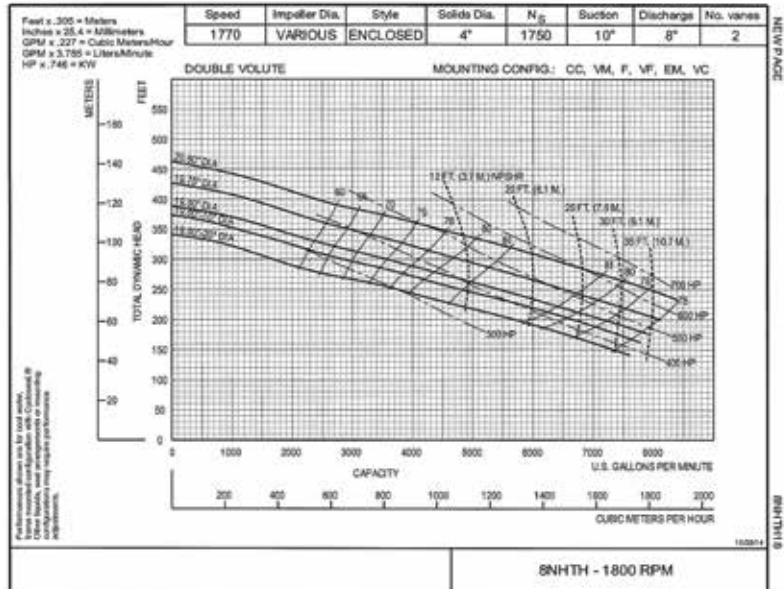


SPECIALTY PUMPS



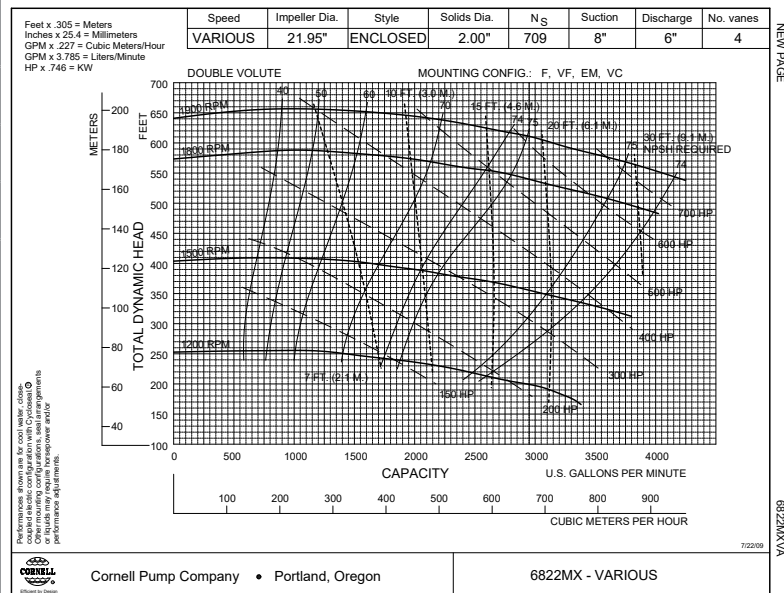
600 HP HIGH HEAD 10" X 8" PUMP (8NHTH)

Horsepower	600 HP
Fuel Tank Capacity	180 GAL
Max Flow	8100 GPM @ 225' TDH/97 PSI
Max TDH	425' TDH/184 PSI @ 500 GPM
BEP	5700 GPM @ 325' TDH/140 PSI
Max Temperature	180° F



600 HP HIGH HEAD 8" X 6" PUMP (6822MX)

Horsepower	600 HP
Fuel Tank Capacity	180 GAL
Max Flow	2,800 GPM @ 630' TDH/272 PSI
Max TDH	658' TDH/285 PSI @ 1,000 GPM
BEP	2,900 GPM @ 600' TDH/260 PSI
Max Temperature	180° F



SPECIALTY PUMPS

NEW PAGE

6822MXVA

TP5-5000 HYDROSTATIC TEST PUMP

Horsepower	25 HP
Fuel Tank Capacity	20 GAL
Max Flow	4.7 GPM
Max Pressure	5000 PSI
L x W x H	55.5" x 55.5" x 49"

The TP5-5000 pump is unitized with a Kubota Diesel engine.

- Cat Model 700DSG118 Triplex Pump
- .551" Plunger, .945" Stroke
- .0026 Gallons Per Stroke
- Fluid End Working Pressure 5,000 PSI Max
- Skid Mounted with 75 Gallon Water Tank
- 1/2" Suction ; 3/8" Discharge Connections
- Available with Optional Stroke Counter



[SPECIALTY PUMPS]

COLD WATER MYERS JETTER TP50-3000 HYDROSTATIC TEST PUMP

L x W x H	19' x 8' x 7'
Weight	6,500 LBS
Fuel Capacity	30 GAL
Water Capacity	500 GAL
Run Time	6 HRS
GPM	30 GPM & 60 GPM
Pressure	2,500 PSI
Hose Length	300'
Trailer Ball	2 5/16"

OPTIONAL ACCESSORIES

- | | |
|------------------------|-----------------------|
| • Extended Length Gun | • Turbo Gun |
| • Additional Tip Sizes | • Wash Heights to 35' |



SPECIALTY PUMPS



HYDROSTATIC TEST PUMP (TP50-3000)

Horsepower	125 HP
Fuel Tank Capacity	30 GAL
Max Flow	47 GPM
Max Pressure	3000 PSI
L x W x H	18' x 8' x 9'
Weight	6,750 LBS

The TP50-3000 pump is unitized with a 4045 John Deere engine, 5 speed manual transmission, Giant Model GP7145 Triplex Pump

- 1.75" Plunger, 2.05" Stroke
- 063 Gallons Per Stroke
- 2 – 47 Gallons Per Minute
- Fluid End Working Pressure 3,000 PSI Max
- Trailer Mounted with 500 Gallon Water Tank
- 2" Suction; 1" Discharge Connections
- Available with Optional Stroke Counter



Trans Gear	Gear Ratio	Engine RPM	Trans Output RPM	Drive Belt Ratio	Pump Speed	GPS	GPM
5	1	2400	2400.00	3.24	740.74	0.063	46.67
5	1	850	850.00	3.24	262.35	0.063	16.53
4	1.48	2400	1621.62	3.24	500.50	0.063	31.53
4	1.48	850	574.32	3.24	177.26	0.063	11.17
3	2.45	2400	979.59	3.24	302.34	0.063	19.05
3	2.45	850	346.94	3.24	107.08	0.063	6.75
2	4.35	2400	551.72	3.24	170.29	0.063	10.73
2	4.35	850	195.40	3.24	60.31	0.063	3.80
1	8.05	2400	298.14	3.24	92.02	0.063	5.80
1	8.05	850	105.59	3.24	32.59	0.063	2.05

HEATED MYERS PUMP

L x W x H	19'x 8'x 7'
Weight	8,250 LBS
Fuel Capacity	30 GAL
Water Capacity	500 GAL
Run Time	4 HRS
Temperature	170° Fahrenheit
GPM	30 GPM & 60 GPM
Pressure	2,500 PSI
Hose Length	300' ON THE REEL
Trailer Ball	2 5/16"

OPTIONAL ACCESSORIES

- Extended Length Gun
- Turbo Gun
- Additional Tip Sizes
- Wash Heights to 35'



[SPECIALTY PUMPS]



POWERFUL

HIGH PRESSURE CLEANING

POWERFUL | DURABLE | GETS THE JOB DONE

Tiger Industrial Rentals offers trailer-mounted pressure washers that are heavy-duty, reliable and easy to use. Our hot water pressure washers are trailer mounted for ease of transportation. They have 25 HP Kubota diesel gas engines, a powerful high-pressure pump, reinforced all-steel frames and chassis. Every unit we rent is put through a rigorous maintenance regimen to ensure the highest quality and performance and certified according to industry standards.

Our knowledgeable personnel will help you select the right equipment for the job, and we're available around the clock to offer any support you may need. In addition, we can readily verify which pieces of equipment you are currently renting, to help you better plan for upcoming projects.

PRESSURE WASHERS

- Single skid & 2-skid (Double Trouble) units
- 40,000 psi
- Hot water
- Turbo nozzle with safety lock-off
- 50' hose and quick-connect turbo nozzles
- Durable high-pressure pump

HIGH PRESSURE CLEANING UNITS



TRAILER MOUNT HOT WATER PRESSURE WASHER OPTIONAL ACCESSORIES

- Turbo Nozzle
- 3/8" x 50' Pressure Hose
- Foot Pedal
- Flex Lance
- Double Trigger Gun
- Extension Wand
- 30" Hydro Mower

4,000 PSI TRAILER MOUNT HOT WATER PRESSURE WASHER

Skid Mount L x W x H	54" x 48" x 50"
Trailer Mount LxWxH	19' x 8' x 6'
Weight	6,500 LBS
Fuel Capacity	18 GAL
Water Capacity	325 GAL
Run Time	4 HRS
Temperature	160° Fahrenheit
Trailer Ball	2" OR 2 5/16"
GPM	6 GPM
Engine	25 HP Kubota Diesel



4,000 PSI TRAILER MOUNT HOT WATER PRESSURE WASHER 2-SKID (DOUBLE TROUBLE)

Skid Mount L x W x H	54" x 48" x 50"
Trailer Mnt L x W x H	19' x 8' x 6'
Weight	8,000 LBS
Fuel Capacity	36 GAL
Water Capacity	325 GAL
Run Time	4 HRS
Temperature	160° Fahrenheit
Trailer Ball	2" OR 2 5/16"
GPM	6 GPM
Engine	25 HP Kubota Diesel



[HIGH PRESSURE CLEANING UNITS]



RESPONSIVE

HIGHEST SERVICE STANDARDS

QUALITY, SERVICE & URGENT RESPONSE

At Tiger Industrial, we run strict quality-control programs on all of our equipment. We meet or exceed the highest safety standards. Tiger maintains an extensive backup fleet so we are ready to respond to your every need at a moment's notice.

GENERATORS | LIGHT TOWERS

- 25 kVA Portable Generators
- 45 kVA Portable Generators
- 85 kVA Portable Generators
- 125 kVA Portable Generators
- 150 kVA Portable Generators
- 220 kVA Portable Generators
- 300 kVA Portable Generators
- 462 kVA Portable Generators
- LED Portable Light Towers

GENERATORS



TANK FARM

OPTIONAL ACCESSORIES

- 12' X 12' Containment Berm
- 50' Extension Cord
- Auxiliary Fuel Tank
- 100 AMP Distribution Box

25 KVA PORTABLE GENERATOR

L x W x H	10' x 5' x 5'		
Standby Output	22 KW		
Prime Output	20 KW		
Weight	2,200 LBS		
Fuel Cap	42 GAL		
Run Time	30 HRS		
AMP DRAW		FUEL CONSUMPTION	
1PH 120V	55 AMPS	Full Load	1.65 GPH
1PH 240V	27 AMPS	3/4 Load	1.3 GPH
3PH 240V	60 AMPS	1/2 Load	0.9 GPH



45 KVA PORTABLE GENERATOR

L x W x H	12' x 6' x 8'		
Standby Output	37 KW		
Prime Output	36 KW		
Weight	2,940 LBS		
Fuel Cap	30 GAL		
Run Time	22 HRS		
AMP DRAW		FUEL CONSUMPTION	
1PH 120V	100 AMPS	Full Load	3.1 GPH
1PH 240V	50 AMPS	3/4 Load	2.2 GPH
3PH 240V	108 AMPS	1/2 Load	1.6 GPH



85 KVA PORTABLE GENERATOR

L x W x H	12' x 6' x 8'		
Standby Output	70 KW		
Prime Output	66 KW		
Weight	5,000 LBS		
Fuel Cap	127 GAL		
Run Time	22 HRS		
AMP DRAW		FUEL CONSUMPTION	
1PH 120V	188 AMPS	Full Load	5.5 GPH
1PH 240V	95 AMPS	3/4 Load	3.8 GPH
3PH 240V	204 AMPS	1/2 Load	2.6 GPH
3PH 480V	102 AMPS		



[POWER GENERATION]

125 KVA PORTABLE GENERATOR

L x W x H	12' x 6' x 8'		
Standby Output	110 KW		
Prime Output	100 KW		
Weight	6,900 LBS		
Fuel Cap	169 GAL		
Run Time	24 HRS		
AMP DRAW		FUEL CONSUMPTION	
1PH 120V	277 AMPS	Full Load	7.3 GPH
1PH 240V	139 AMPS	3/4 Load	5.7 GPH
3PH 240V	300 AMPS	1/2 Load	4.0 GPH
3PH 480V	150 AMPS		



150 KVA PORTABLE GENERATOR

L x W x H	12' x 6' x 8'		
Standby Output	132 KW		
Prime Output	120 KW		
Weight	9,278 LBS		
Fuel Cap	214 GAL		
Run Time	25 HRS		
AMP DRAW		FUEL CONSUMPTION	
1PH 120V	333 AMPS	Full Load	8.4 GPH
1PH 240V	166 AMPS	3/4 Load	6.5 GPH
3PH 240V	361 AMPS	1/2 Load	4.9 GPH
3PH 480V	180 AMPS		



GENERATORS



220 KVA PORTABLE GENERATOR

L x W x H	16' x 6' x 8'		
Standby Output	194 KW		
Prime Output	176 KW		
Weight	6,900 LBS		
Fuel Cap	214 GAL		
Run Time	21 HRS		
AMP DRAW		FUEL CONSUMPTION	
1PH 120V	488 AMPS	Full Load	13.6 GPH
1PH 240V	244 AMPS	3/4 Load	10.4 GPH
3PH 240V	529 AMPS	1/2 Load	7.7 GPH
3PH 480V	264 AMPS		



300 KVA PORTABLE GENERATOR

L x W x H	16' x 6' x 11'		
Standby Output	264 KW		
Prime Output	240 KW		
Weight	13,000 LBS		
Fuel Cap	300 GAL		
Run Time	21 HRS		
AMP DRAW		FUEL CONSUMPTION	
1PH 120V	667 AMPS	Full Load	15 GPH
1PH 240V	333 AMPS	3/4 Load	14 GPH
3PH 240V	722 AMPS	1/2 Load	11 GPH
3PH 480V	361 AMPS		



[POWER GENERATION]



LIGHT TOWERS



4,000 WATT PORTABLE LIGHT TOWER

L x W x H	173" x 50" x 70"
Max Height	32'
Weight	1,644 LBS
Fuel Cap	30 GAL
Run Time	48 HR
Lumens	440,000
Light Coverage	5-7 Acres
Sound Level	66 DB



LED LIGHT TOWER

L x W x H	716" x 98" x 348"
Weight	1,720 LBS
Fuel Cap	30 Gallon Polyethylene Fuel Tank
Run Time	50 HR
Lamp	542,000 Lumens SHO-HD® Lamp Fixture. 4 Metal Halide Lamps. Sequenced Light System™
Stabilizer	Four-Point Outrigger System
Doors	Gull-Wing Style Doors. Reaction injection providing strength & corrosion resistance.
Wind Speed	55 MPH Operating Wind Speed
Lifting	Forklift Pockets and Lifting Eye
System	Four-Point Outrigger System
GPS	GPS Ready
Rotation	59° Fixture Rotation



[POWER GENERATION]



FLEXIBILITY

TANKS & SKIPS

DURABLE, VERSATILE & LONG LASTING

No matter what your project requirements are, Tiger has the right equipment for the job. Our fleet of fuel pods, tanks and skips are built to last. Our units are constructed of the toughest materials. Plus there are ample options for specialized uses, such as additional tie downs, saddle support for containing round objects and side door access for easy loading on some baskets. Our units meet industry standards for labeling details such as load capability. With the flexibility in our fleet, you are able to source exactly the right units for every job you need to accomplish.

528 GAL DOUBLE WALL FUEL POD

L x W x H	87" x 46" x 52"
Containment	110% Secondary Containment
Capacity	1,825 LBS Empty/5,574 LBS Full

- Internal Baffles
- Secure Hose Access
- Full Load Lifting Eyes
- Tie Down Points
- Direct to Machinery Fuel Ports

OPTIONAL ACCESSORIES

- 16' Tandem Trailer
- 110V Fuel Pump
- Fuel Pump - 12V Fuel Pump & Solar Panel



550 GAL STAINLESS STEEL TRANSPORT TANK

L x W x H	56" x 50" x 75"
Gross Weight	9,385 LBS
Tare Weight	628 LBS

OPTIONAL ACCESSORIES

- 4 Point Sling



RUBBISH SKIPS

DIMENSIONS	L X W X H	
EXTERNAL (MM)	3776 x 1839 x 1554	
EXTERNAL (FT)	12'4" x 6' x 5'1"	
INTERNAL (MM)	3680 x 1700 x 1300	
INTERNAL (FT)	12'1" x 5'7" x 4'3"	
WEIGHT	KGS	LBS
TARE	1600	3527
PAYLOAD	5900	13007
MAX GROSS WEIGHT (MGW)	7500	16534

ADDITIONAL FEATURES

- Designed, Constructed, Tested to EN12079-1 / DNV 2.7-1 / SEPCo OPS 0055 / API RP



[TANKS & SKIPS]

[MANIFOLDS & ...]

ENGINEERED

TYPES OF BUILDINGS

STANDARD

PRODUCT LINES:

6.3 PSI, 8 PSI & 10 PSI

- 12' x 40'
- 8' x 40'
- 8' x 20'

Tiger will customize the interior of any building to provide the specific layout(s) that your company needs, including:

- Duplex
- Triplex
- Cool Down Buildings
- Bathroom Units
- Men's Multi-Bathroom
- Women's Multi-Bathroom
- Single Bathroom
- Shower Trailers
- Locker Rooms
- Bathroom & Kitchenettes
- Decon Units
- Tool Rooms
- Office Units
- Guard Shacks
- Secure Storage Areas
- Bunkhouses
- Safety Compound
- Living Quarters
- Laundry Units
- Medical Facilities
- Pharmacies
- Outage Housing
- Hurricane Shelters



THE TIGER ADVANTAGE

SAFETY, QUALITY, DELIVERY & SERVICE

SAFETY:

- Designed for occupant safety
- Designed to VCE duration requirements
- Design review performed by Qualified Blast Design Engineers

QUALITY:

- Documented welding procedures
- Material traceability
- 3rd party QC inspection reports

DELIVERY:

- Manufacturing capacity to meet large project schedules
- Rapid deployment
- International logistics experience
- Able to deliver all building sizes with either flatbed or rollback

SERVICE:

- 24-hour "on call" customer service
- Staff service technicians
- Service centers

8' X 20' UNITS



Tiger has portable buildings that are used for pipeline inner connections at the plant where they require blast rated models. If you need a blast resistant building, we've got it!

8' X 20' BLAST RESISTANT BUILDING/COOL DOWN BUILDING

SIZE	PSI RATING	DURATION	RESPONSE LEVEL
8' x 20' x 8'6"	6.3 PSI	800 MS	MEDIUM
8' x 20' x 8'6"	8.0 PSI	42.5 MS	MEDIUM
Weight	12000 LBS		
Lifting Lugs	(4)		
HVAC	(1) HVAC - Unit, Non-Classified Electrical Insulated		
Electrical	(1) 240 V, 100 A, Single Phase, Non-Classified Electrical		
Doors/Windows *	(2) Blast Rated Doors/ (1) Blast Rated Windows		
Fire Protection	(2) Smoke Detectors & (1) Fire Extinguisher		
Lights	(2) Emergency Exit Lights & (3) 4' Long Dual Bulb Fluorescent Lights		
Outlets/Ports	(3) Duplex Electrical Outlets/ (2) Data Ports & (2) Phone Ports		
Walls	Painted Interior Wall Covering - Plywood		

* UPGRADE INCLUDED



[BLAST RESISTANT BUILDINGS]



TIGER INDUSTRIAL LOCATIONS

Beaumont, Texas

1313 Gulf Street
Beaumont, TX 77701

Victoria, Texas

11901 US Highway 59,
N. Victoria, TX 77905

Dilley, Texas

13400 S. Interstate 35
Dilley, TX 78017

Houston, Texas

7000 Decker Dr.
Baytown, TX 77520

Corpus Christi, Texas

8283 Leopard St.
Corpus Christi TX 78409

Odessa, Texas

13014 West County Road
100, Odessa, TX 79765

24/7 Dispatch: 888-866-0047 / 409-832-9336 / TigerIndustrialRentals.com



Scan to view Tiger's
capabilities video >

