

INDUSTRIAL RENTAL EQUIPMENT

Providing the most reliable rental equipment with a huge fleet of inventory for downstream repairs & maintenance.

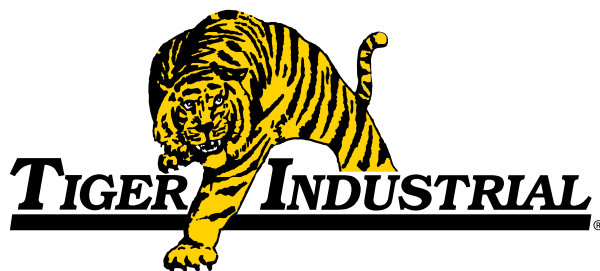


DOWNSTREAM CATALOG



Reliable Solutions for the
Petroleum Industry.

That's the mark of Tiger.



When it comes to supplying essential rental equipment, you need a reliable company that gets the job done right.

That's the mark of Tiger.



SCAN to view the
our capabilities video



DOWNSTREAM RENTAL EQUIPMENT TABLE OF CONTENTS

REFINERY RENTAL PACKAGE	4	12' & 24' Road Crossing Manifold	39
		Containment Berm	39
MATS	6	GENERATORS & LIGHT TOWERS	40
ECOmats™	8	25 kVA Portable Generator	41
Tiger Poly Mats	10	45 kVA Portable Generator	41
Tiger Laminate Mats	12	85 kVA Portable Generator	41
Tiger Traditional Wood Mats	14	125 kVA Portable Generator	42
		150 kVA Portable Generator	42
BLAST RESISTANT BUILDINGS	16	220 kVA Portable Generator	42
12' x 40' Blast Resistant Buildings	17	300 kVA Portable Generator	43
Multi-Plex Blast Resistant Buildings	19	LED Portable Light Tower	43
8' x 40' Blast Resistant Buildings	20	4,000 Watt Portable Light Tower	43
8' x 20' Blast Resistant Buildings	26	CLEANING & WASHING UNITS	44
Blast Resistant Building Accessories/Upgrades	27	Heated Myers Pump	45
		Cold Water Myers Pump	45
PUMPS	30	3,000 PSI Diesel Pressure Washer	45
6" x 6" Vac-Assist Pumps (6612T)	31	4K PSI Trailer Mount Hot Water Pressure Washer	46
6" x 6" Vac-Assist Pumps (6NNT)	31	4K PSI Trailer Mount Hot Water Pressure Washer	46
4" x 4" Vac-Assist Pump (4NNT)	32	2 Skid (Double Trouble)	46
Super 6 Pump (6NHTA)	32	Hydroblasters (10K, 20K & 40K)	47
6" x 6" Wet Prime Trash Pump (6STX)	33	10K PSI Low Volume Hydroblaster	47
6" x 3" High Head Vac-Assist Pump (3HC)	33	FUEL PODS, TANKS & SKIPS	48
Super 6" x 3" Vac-Assist Pump (3617MX)	34	528 Gallon Double Wall Fuel Pod	49
6" x 4" High Head Vac-Assist Pump (4622MX)	34	550 Gallon Stainless Steel Transport Tank	49
10" x 8" Water Transfer Pump - 325 HP (8NHTA)	35	2 & 3 Yard Tilt Hoppers	49
10" x 8" Water Transfer Pump - 600 HP (8NHTH)	35	6' x 12' Slant Nose Skip Pan	50
8" x 6" x 14" Centrifugal Diesel Pump	36	4' x 8' Basket	50
3" Air Diaphragm Pump	36	4' x 12' Scaffold Basket	50
W-440 Triplex Pump	37	6' x 12' Basket	50
Sludge Master 4" Poppet Pump	37		
8" Electric Sludge/Dredge Pump	38		
Coke Cutting Pumps & Services	38		

PUMPS



8

25

6

12

26

18

16

SKIPS



28

24

15

5

19

2

ECOMAT



13

9

PRESSURE WASHERS



1

10

22

HYDRO BLASTER



LIGHT TOWERS



GENERATORS



BLAST RESISTANT BUILDINGS




TIGER INDUSTRIAL

1. 8' x 16' ECOMats™
2. 12' x 40' Blast Resistant Building
3. Multiplex Building
4. 8' x 40' Blast Resistant Building
5. 8' x 40' Tool Room
6. 8' x 40' Decon Unit
7. 8' x 40' Multi-Bath Unit
8. 8' x 20' Blast Resistant Building
9. 6" Vac Assist Pump
10. 8" Vac Assist Pump
11. 6" Trash Pump
12. 6" High Head Pump
13. Containment Berm
14. 25 kVA Generator
15. 45 kVA Generator
16. 85 kVA Generator
17. 125 kVA Generator
18. 150 kVA Generator
19. 220 kVA Generator
20. 300 kVA Generator
21. 4K Light Tower
22. LED Light Tower
23. 528 Gal Fuel Tank
24. 550 Gal Transport Tank
25. 4K Pressure Washer
26. Myers Pump
27. Hydroblaster
28. Skip Pan

4+

UNIQUE MATTING SOLUTIONS

VE

TIGER NOV

Nobody can move mats like us. Our wide range of advantages to fit your specific needs. Our fleet of mats encompasses solutions for construction, frac sand, completion and more.

At Tiger, we have an agnostic approach. We can offer assistance in selecting the right mat for your application and get it to you - ASAP. Whether you want to rent or buy, we've got you covered.



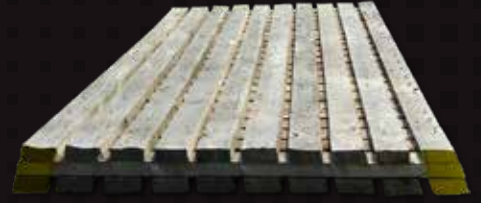
ECOMATS™

TIGER INDUSTRIAL RENTALS HAS MORE MATTING SOLUTIONS

TIGER HAS MORE MATTING SOLUTIONS

Tiger! We now have 4 matting solutions for clients in the energy industry. Each mat has distinct individual uses. Our diverse selection can be used in an Upstream, Midstream or Downstream work-site. Our combined solutions for integrity pipeline work, access roads, tank farms, refineries, high lines, train derailments, commercial sites, and many others.

From mat rentals, we believe in all of them and have a mat for every application. Our highly skilled team will find the right mat for the right job, but if you have a preference for a specific mat, tell us what you want and we will provide it. Whether you want composite, timber or laminated, Tiger has the mat for you. Call us today for more details.



TIGER POLY MATS



TIGER LAMINATE MATS



**TIGER TRADITIONAL
WOOD MATS**



SAFER | DURABLE | LONG LASTING

STANDARD SPECIFICATIONS

SIZE	8' x 16'
SQ FT	128 sf
WEIGHT	3,000 lbs
MATS/ TRUCK	14/15
CONNECTING	Directly
PSI	3,910
LINEAR FT / TRUCK	112
CONSTRUCTION	HDPE+
THICKNESS	4"

The ECOMat™, stays on the job longer and saves both replacement and transport costs. Able to haul up to 15/16 ECOMats™ per load. That means fewer trips, fewer trucks, fewer drivers, a lot less fuel and a lot more savings.



DURABILITY

ADVANTAGES

- Maximum Durability
- Extreme Life
- Very Contractor Friendly
- Fast & Easy to Lay
- Traceable with RFID Chip
- Unbeatable High PSI
- Traction
- No Nails
- No Cable Loops
- No Pinning Required
- Flame Spread Rated
- No Absorption & Won't Float
- Repairable



ECOMATS™



TIGER POLY MAT

STRONG | HEAVY-DUTY | SAFE

STANDARD SPECIFICATIONS

SIZE	6.5' X 13'4"
SQ FT	86 sf
WEIGHT	1,095 lbs
MATS/ TRUCK	40
CONNECTING	8 Pin
PSI	600
LINEAR FT / TRUCK	260
CONSTRUCTION	HDPE+
THICKNESS	4"

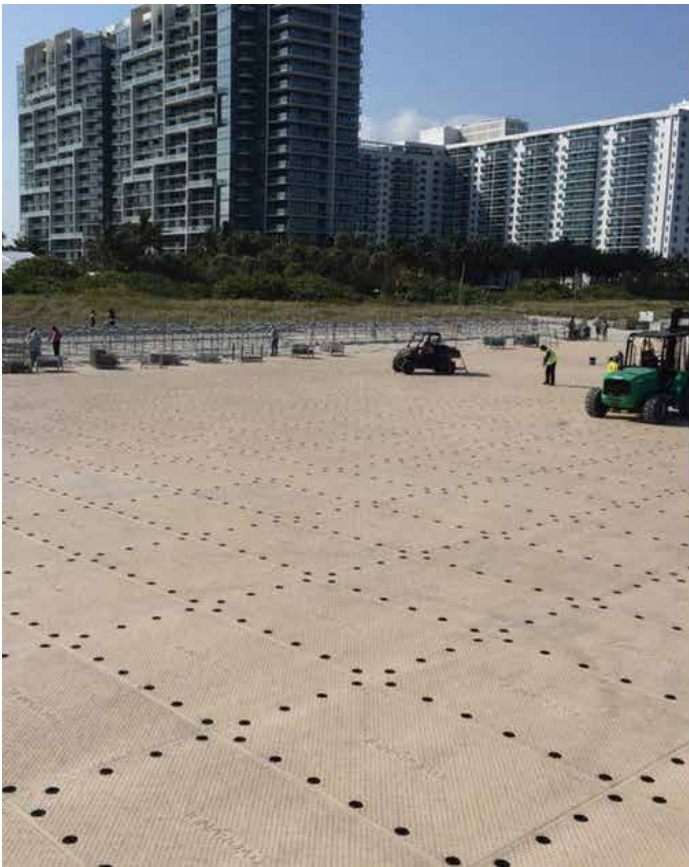
The Tiger Poly Mat will not warp, rot, crack, or delaminate, and contains no unsafe chemicals. The cross-ribbed interior distributes weight across the entire panel providing a strong support structure. They are properly sized to easily ship 40 mats in standard ISO containers and flatbed trailers.



STRONGER

ADVANTAGES

- Long Life
- High PSI
- No Nails or Gaps
- Easy Cleaning/No Absorption
- Heavy Duty CAM Locking System
- Non-Conductive
- Excellent with Sub-Base
- Ships in Containers
- Great for a Sand Surface
- Strong Support Structure
- Inventory Control
- Flame Spread Rated



[TIGER POLY MATS]



TIGER LAMINATE MAT

LIGHTER | FASTER | LONGER LIFE

STANDARD SPECIFICATIONS

SIZE	8' X 16'
SQ FT	128 sf
WEIGHT	1,406 lbs
MATS/ TRUCK	30/32
CONNECTING	Directly
PSI	Site Specific
LINEAR FT / TRUCK	256
CONSTRUCTION	Southern Yellow Pine
THICKNESS	4.125"

At less than half the weight of a traditional bolted oak access mat, the Tiger Laminate Mat is twice as strong and 5 times stiffer. The revolutionary design has a solid top making them easy to clean and prevent the migration of site to site contamination.

EFFICIENT

ADVANTAGES

- Big Freight Advantage
- Very Economical
- No Nails
- Longer Life than Traditional Wood
- No Gaps
- No Cable Loops
- Very Contractor Friendly
- Repairable
- Maximum Durability
- Longer Life
- Superior Strength
- Sustainability
- Faster Installation



[TIGER LAMINATE MATS]





TIGER TRADITIONAL WOOD MAT

LOW COST | RIGID

STANDARD SPECIFICATIONS

SIZE	8' X 16'
SQ FT	128 sf
WEIGHT	3,000 lbs
MATS/ TRUCK	14/15
CONNECTING	Directly
PSI	N/A
LINEAR FT / TRUCK	112
CONSTRUCTION	Mixed Hardwood
THICKNESS	5.5"

Tiger Hardwood Mats are used around the world for truck mats, mud mats, construction mats, swamp mats, and ground protection. Made for concrete or general construction temporary roads.



AFFORDABLE

ADVANTAGES

- Hardwood Construction
- Economical
- Low Replacement Cost
- Very Rigid
- Accepted by Contractors at Job Sites Worldwide
- All Weather Access
- Heavy-Duty with Mixed Hardwood and Oak Laminate Boards
- 3-Ply Design for Durability & Strength



[TIGER TRADITIONAL WOOD MATS]



ENGINEERED

TYPES OF BUILDINGS

STANDARD

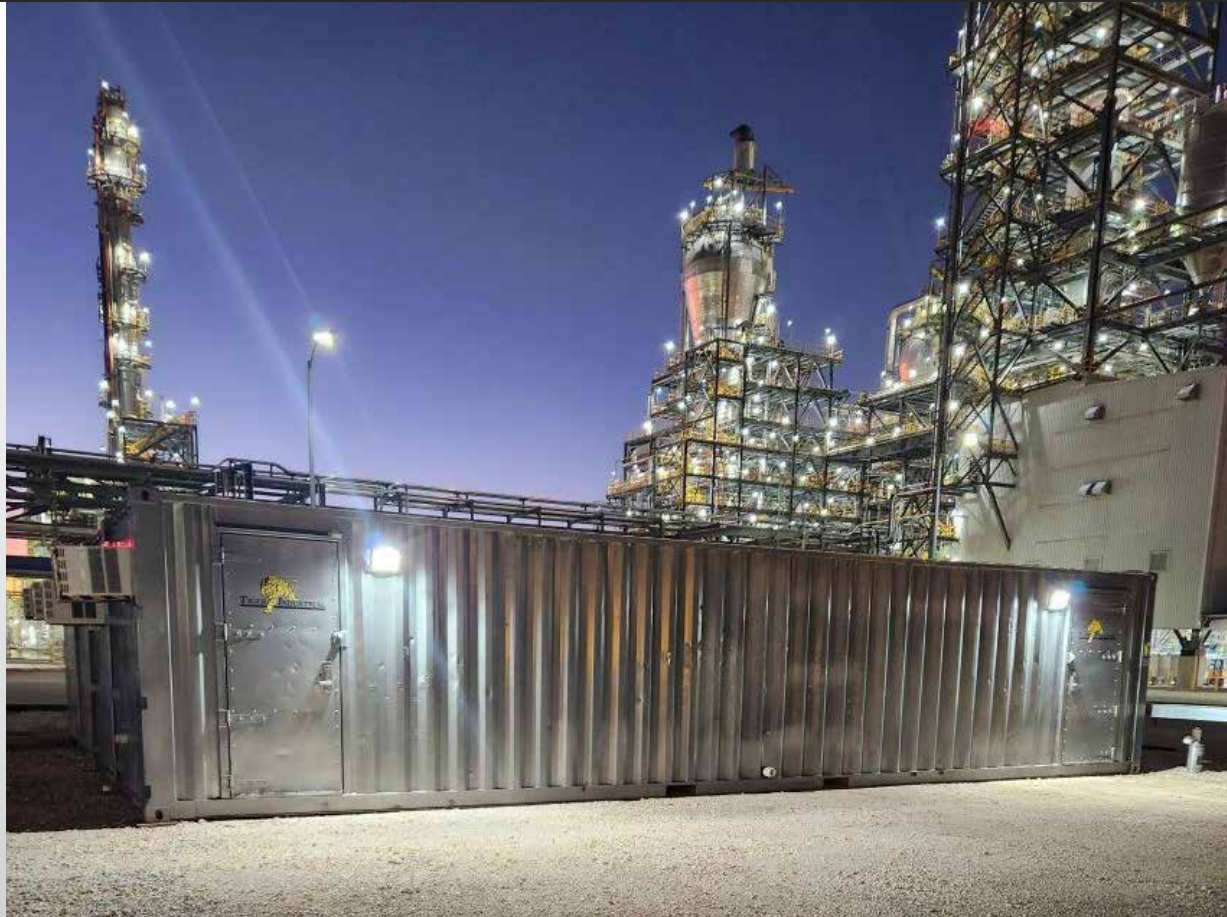
PRODUCT LINES:

6.3 PSI, 8 PSI & 10 PSI

- 12' x 40'
- 8' x 40'
- 8' x 20'

Tiger will customize the interior of any building to provide the specific layout(s) that your company needs, including:

- Duplex
- Triplex
- Cool Down Buildings
- Bathroom Units
- Men's Multi-Bathroom
- Women's Multi-Bathroom
- Single Bathroom
- Shower Trailers
- Locker Rooms
- Bathroom & Kitchenettes
- Decon Units
- Tool Rooms
- Office Units
- Guard Shacks
- Secure Storage Areas
- Bunkhouses
- Safety Compound
- Living Quarters
- Laundry Units
- Medical Facilities
- Pharmacies
- Outage Housing
- Hurricane Shelters



THE TIGER ADVANTAGE

SAFETY, QUALITY, DELIVERY & SERVICE

SAFETY:

- Designed for occupant safety
- Designed to VCE duration requirements
- Design review performed by Qualified Blast Design Engineers

QUALITY:

- Documented welding procedures
- Material traceability
- 3rd party QC inspection reports

DELIVERY:

- Manufacturing capacity to meet large project schedules
- Rapid deployment
- International logistics experience
- Able to deliver all building sizes with either flatbed or rollback

SERVICE:

- 24-hour "on call" customer service
- Staff service technicians
- Service centers

12' X 40' BLAST RESISTANT BUILDINGS

12' X 40' BLAST RESISTANT BUILDING

SIZE	PSI RATING	DURATION	RESPONSE LEVEL
12' x 40'	8.0 PSI	200 MS	MEDIUM
Weight	50,000 lbs		
Lifting Lugs	(4)		
HVAC *	(1) Central Air & Heat Class I Div II		
Electrical *	(1) 240 V, 100 A, Single Phase, Class I Div II - External Electrical Connection		
Doors/Windows *	(2) Blast Rated Doors/ (2) Blast Rated Windows		
Fire Protection	(3) Smoke Detectors Located In Interior of Building, Connected to a 6-Zone Fire Panel & (1) Fire Extinguisher		
Antenna *	(1) Wireless Signal Repeater with Antenna		
Lights	(8) 4' Long Dual Bulb Fluorescent Lights (2) External Explosion Proof Lights (2) Emergency Exit Lights		
Outlets/Ports	(10) Duplex Electrical Outlets/ (9) Data Ports & (9) Phone Ports		
Walls *	Interior Wall Covering - .020 Aluminized Textured Sheet Rock - Bone White		
Floors *	Heavy Industrial Rubberized Tile Floors		
Paint	Exterior Paint - Direct To Metal, Rust Inhibiting, High Solids Urethane		
Phones	Data/Phone Connection System - 110 Punch Panel and Cat 5 Patch Panel		
Plumbing	Easy Access Plumbing And Sewage Ports		
OPTIONAL UPGRADES			
<ul style="list-style-type: none"> • LEL and H₂S gas detection • Office Partitions 		<ul style="list-style-type: none"> • Bathrooms • Multi Unit Complexes 	

*** UPGRADE INCLUDED**



[12' X 40' BLAST RESISTANT BUILDINGS 8.0 PSI]

12' X 40' BLAST RESISTANT BUILDINGS

[12' X 40' BLAST RESISTANT BUILDINGS 10.0 PSI]

12' X 40' BLAST RESISTANT BUILDING

SIZE	PSI RATING	DURATION	RESPONSE LEVEL
12' x 40'	10.0 PSI	200 MS	MEDIUM
Weight	53,000 lbs		
Lifting Lugs	(4)		
HVAC *	(1) Central Air & Heat Class I Div I I		
Electrical*	(1) 240 V, 100 A, Single Phase, Class I Div I I - External Electrical Connection		
Doors/Windows *	(2) Blast Rated Doors/ (2) Blast Rated Windows		
Fire Protection	(3) Smoke Detectors Located In Interior of Building, Connected to a 6-Zone Fire Panel & (1) Fire Extinguisher		
Antenna *	(1) Wireless Signal Repeater with Antenna		
Lights	(8) 4' Long Dual Bulb Fluorescent Lights (2) External Explosion Proof Lights (2) Emergency Exit Lights		
Outlets/Ports	(10) Duplex Electrical Outlets/ (9) Data Ports & (9) Phone Ports		
Walls *	Interior Wall Covering - .020 Aluminized Textured Sheet Rock - Bone White		
Floors *	Heavy Industrial Rubberized Tile Floors		
Paint	Exterior Paint - Direct To Metal, Rust Inhibiting, High Solids Urethane		
Phones	Data/Phone Connection System - 110 Punch Panel and Cat 5 Patch Panel		
Plumbing	Easy Access Plumbing And Sewage Ports		
OPTIONAL UPGRADES			
<ul style="list-style-type: none"> • LEL and H₂S gas detection • Office Partitions • Bathrooms • Multi Unit Complexes 			



*** UPGRADE INCLUDED**



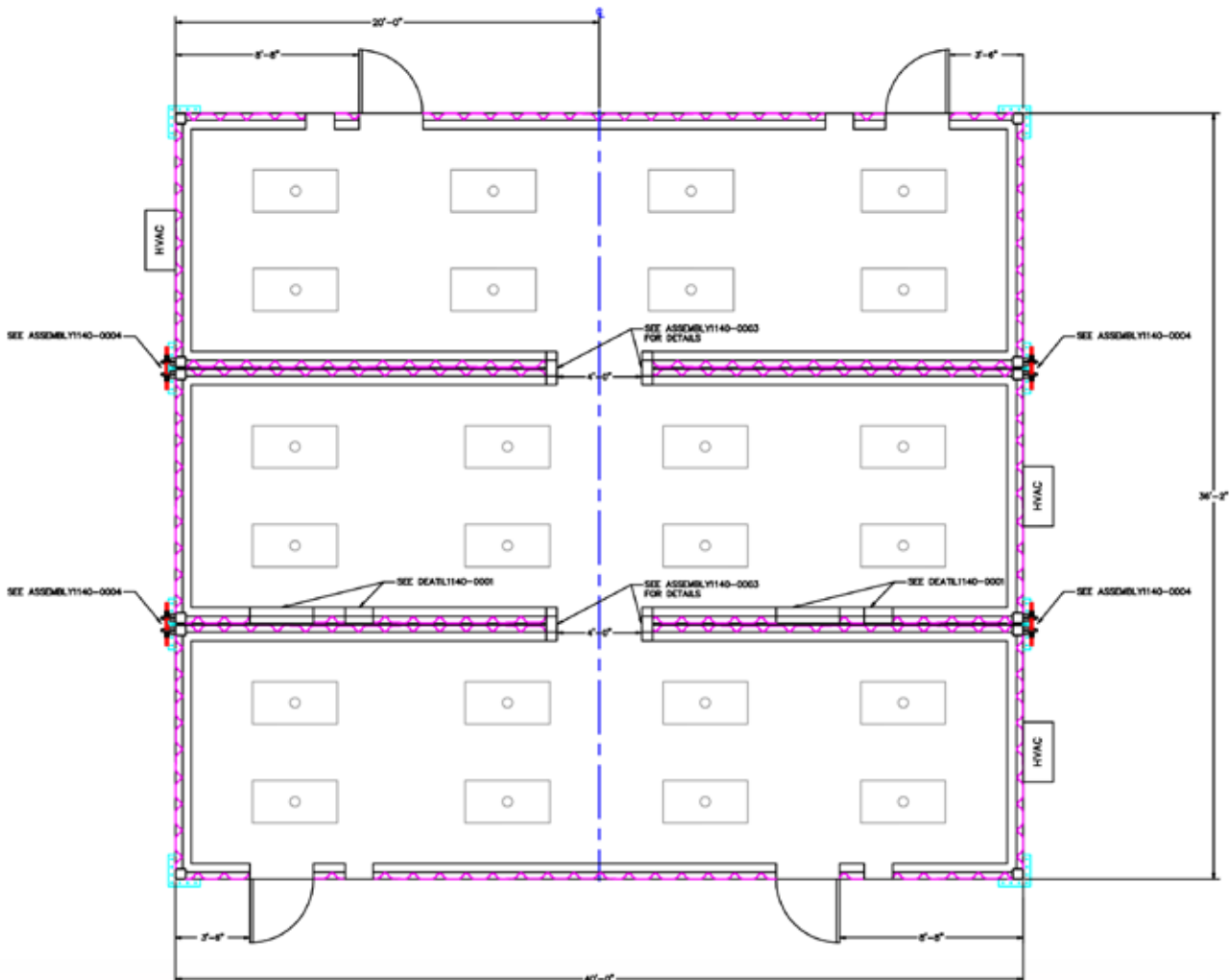
MULTI-PLEX BUILDINGS

MULTI-PLEX BUILDINGS

SIZE	PSI RATING	DURATION	RESPONSE LEVEL
24'x40'	8.0 PSI	200 MS	MEDIUM
36'x40'	8.0 PSI	200 MS	MEDIUM



[MULTI-PLEX BUILDINGS]



8' X 40' BLAST RESISTANT BUILDINGS

[8' X 40' BLAST RESISTANT BUILDINGS]

8' X 40' BLAST RESISTANT BUILDING			
SIZE	PSI RATING	DURATION	RESPONSE LEVEL
8'x40'	6.3 PSI	800 MS	MEDIUM
8'x40'	8.0 PSI	42.5 MS	MEDIUM
Weight	22000 LBS		
Lifting Lugs	{4}		
HVAC	18,000 Btu Units, Non-Classified Electrical Insulated		
Electrical	(1) 240 V, 100 A, Single Phase, Non-Classified Electrical		
Doors	{2} Blast Rated Doors		
Windows *	{2} Blast Rated Windows		
Fire Protection	{2} Smoke Detectors & {1} Fire Extinguisher		
Lights	{2} Emergency Exit Lights {6} 4' Long Dual Bulb Fluorescent Lights		
Outlets	{6} Duplex Electrical Outlets		
Ports	{3} Data Ports & {3} Phone Ports		
Walls	Painted Interior Wall Covering - 3/4" Industrial Grade Plywood		
Floors *	Heavy Industrial Rubberized Tile Floors		
Paint	Exterior Paint - Direct To Metal, Rust Inhibiting, High Solids Urethane (Steel Grit Blast Prep)		
OPTIONAL UPGRADES			
<ul style="list-style-type: none"> • Tool/Material Racks And Cabinets • Wireless/Radio Signal Amplifier 			

*** UPGRADE INCLUDED**





Tiger is the ONLY rental service provider that has blast rated windows as a standard in all building sizes.

Blast-resistant windows are a key factor in mitigating unnecessary injuries in the event of an explosion or severe weather.

For every day use, blast-resistant windows provide natural light which can improve your health, attitude and mindset resulting in a more productive workplace.

With Tiger, you get protection, productivity and reliability. Put YOUR safety first with Tiger Industrial's blast resistant buildings!

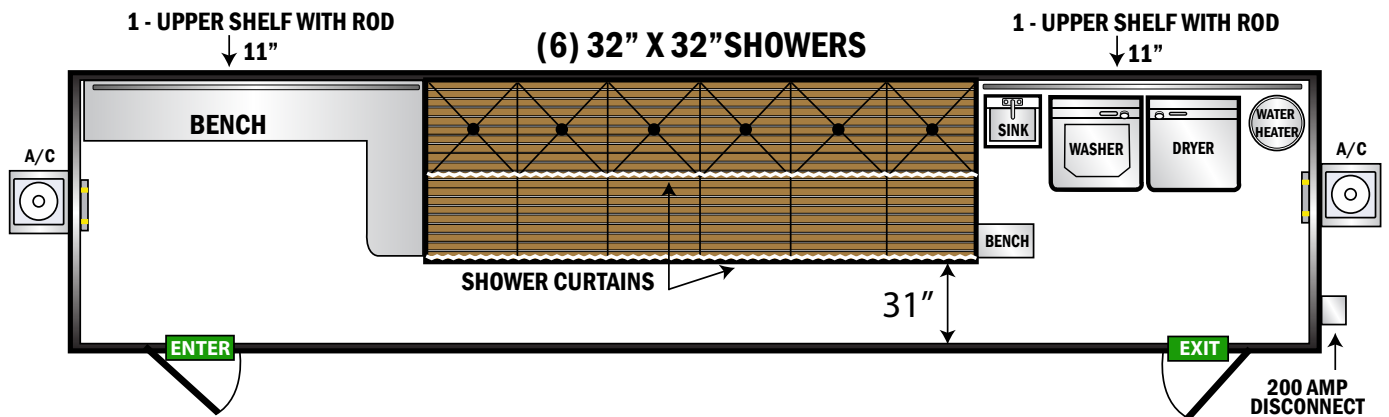
8' X 40' DECON UNITS

8' X 40' DECON UNIT

SIZE	PSI RATING	DURATION	RESPONSE LEVEL
8'x40'	6.3 PSI	800 MS	MEDIUM
8'x40'	8.0 PSI	42.5 MS	MEDIUM



[8' X 40' DECON UNITS]



8' X 40' MULTI-BATH UNITS

8' X 40' MULTI-BATH UNIT

SIZE	PSI RATING	DURATION	RESPONSE LEVEL
8'x40'	6.3 PSI	800 MS	MEDIUM
8'x40'	8.0 PSI	42.5 MS	MEDIUM



[8' X 40' MULTI-BATH UNITS]



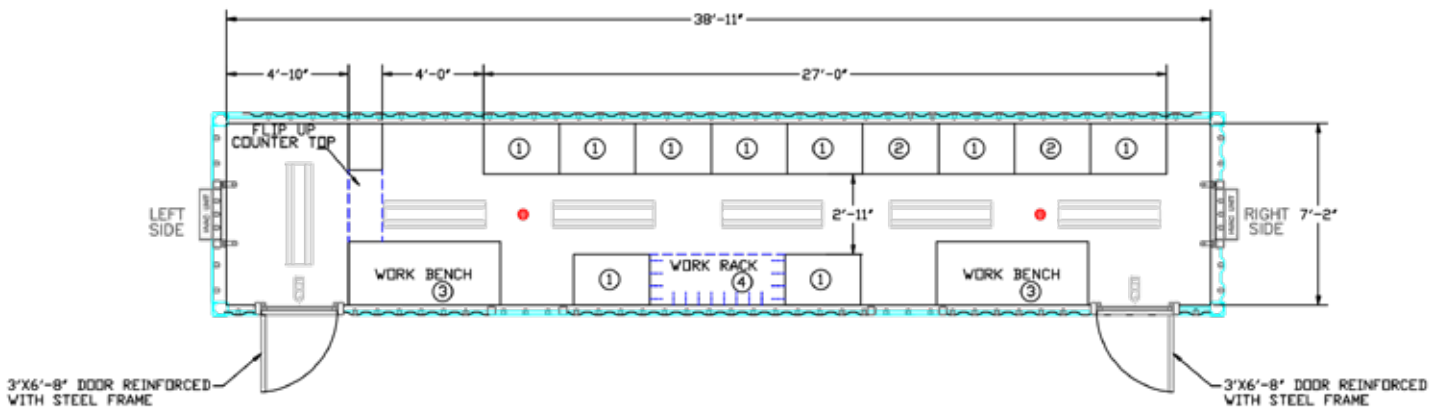
8' X 40' BLAST RESISTANT TOOL ROOM

8' X 40' BLAST RESISTANT TOOL ROOM

SIZE	PSI RATING	DURATION	RESPONSE LEVEL
8'x40'	6.3 PSI	800 MS	MEDIUM
8'x40'	8.0 PSI	42.5 MS	MEDIUM



[8' X 40' BLAST RESISTANT TOOL ROOM]



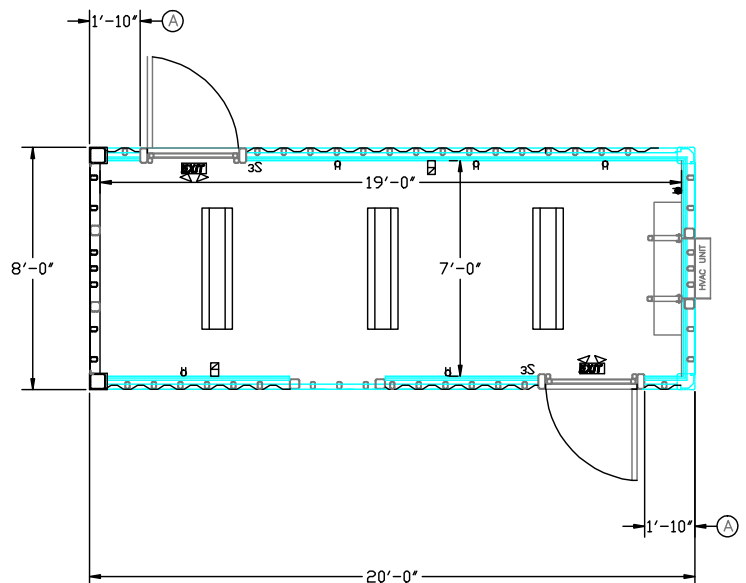


8' X 20' BLAST RESISTANT BUILDINGS

8' X 20' BLAST RESISTANT BUILDING/COOL DOWN BUILDING

SIZE	PSI RATING	DURATION	RESPONSE LEVEL
8' x 20' x 8'6"	6.3 PSI	800 MS	MEDIUM
8' x 20' x 8'6"	8.0 PSI	42.5 MS	MEDIUM
Weight	12000 LBS		
Lifting Lugs	[4]		
HVAC	(1) HVAC – Unit, Non-Classified Electrical Insulated		
Electrical	(1) 240 V, 100 A, Single Phase, Non-Classified Electrical		
Doors/Windows *	(2) Blast Rated Doors/ (1) Blast Rated Windows		
Fire Protection	(2) Smoke Detectors & (1) Fire Extinguisher		
Lights	(2) Emergency Exit Lights & (3) 4' Long Dual Bulb Fluorescent Lights		
Outlets/Ports	(3) Duplex Electrical Outlets/ (2) Data Ports & (2) Phone Ports		
Walls	Painted Interior Wall Covering - Plywood		
Floors *	Heavy Industrial Rubberized Tile Floors		
Paint	Exterior Paint - Direct To Metal, Rust Inhibiting, High Solids Urethane (Steel Grit Blast Prep)		

*** UPGRADE INCLUDED**



[8' X 20' BLAST RESISTANT BUILDINGS]

BRB ACCESSORIES/UPGRADES

- Anchored Desks
- Chairs
- Conference Table
- Kitchenette
- Dry Erase Boards
- 6' White Folding Tables
- Plastic Folding Chairs
- Door Cameras
- Cubicles
- Microwaves
- Cellular Repeaters
- Class 1 Div 2 A/C for 8' x 40' and 8' x 20'
- Large Tub Sink
- 4.5 Cubic Lockable Refrigerator
- Lockers
- Showers
- 32" TV/ DVD package
- LEL Detection
- H₂S Detection
- Base board Heaters
- KVA Generators
- Exterior Surge Protection
- Interior Power Strip/ Surge Protection

OPTIONAL FLOOR PLANS

- Men's Multi-Bathroom
- Women's Multi-Bathroom
- Single Bathroom
- Medical
- Decon
- Tool Room
- Outage Housing
- Hurricane Shelters
- Duplex
- Triplex
- Cool Down Buildings

DELIVERY OPTIONS

- Rollback Trucking - eliminates the need for on-site unloading with a crane.



12 x 40 setup for 10 man office configuration.



12 x 40 single office with conference room.



The Locker upgrade keep your crew's personal items safe and secure.

All Tiger buildings are furnished with fire extinguishers and have 24 Hour Technical Support and Services.





RESPONSIVE. AVAILABLE. RELIABLE.



RESPONSIVE



TIGER DELIVERS

OUR READY LINE IS UP AND READY

We keep a large fleet of pumps prepped for immediate deployment. Every piece of equipment we offer is put through a rigorous maintenance regimen to ensure the highest quality and performance.

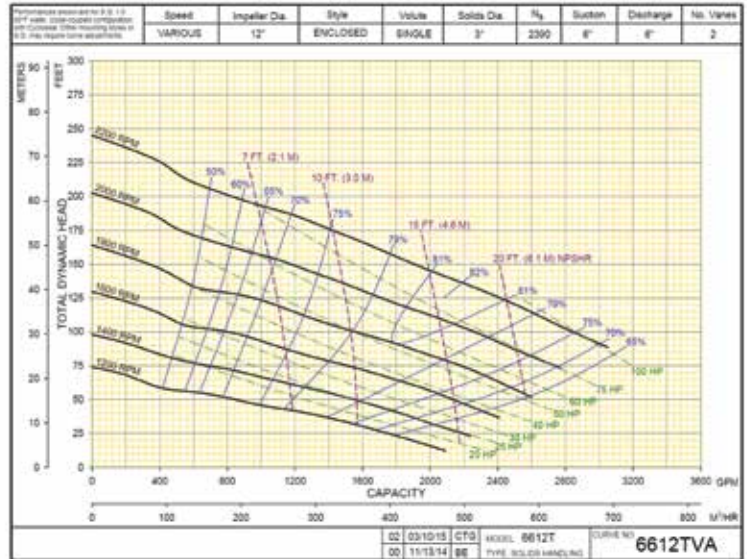
Our knowledgeable personnel will help you select the right pump for the job, and we're available around the clock to offer any support you may need.

PUMPS:

- Centrifugal
- Trash
- Water Transfer
- Vac Assist
- Air-Operated
- Diesel & Electric

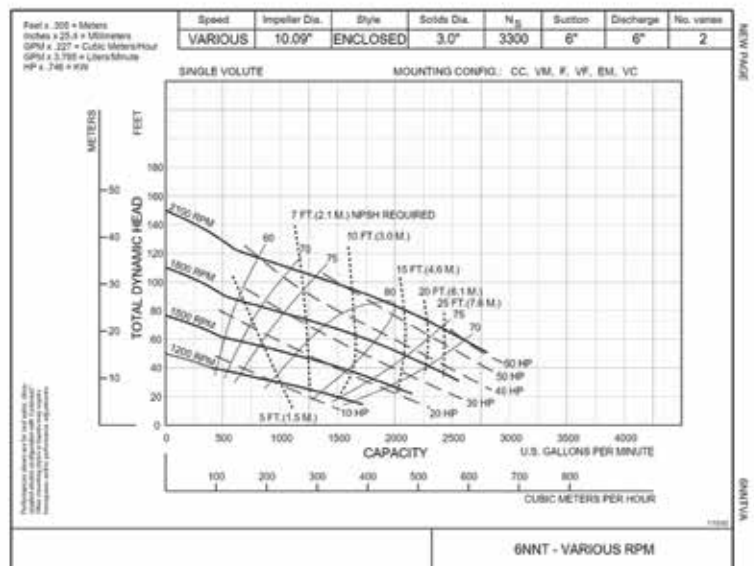
6" X 6" VAC ASSIST PUMP (6612T)

Horsepower	74 HP
Fuel Tank Capacity	96 GAL
Max Flow	2750 GPM @ 75' TDH / 33 PSI
Max TDH	190' TDH/82 PSI @ 1000 GPM
BEP	2100 GPM @ 115' TDH/50 PSI



6" X 6" VAC ASSIST PUMP (6NNT)

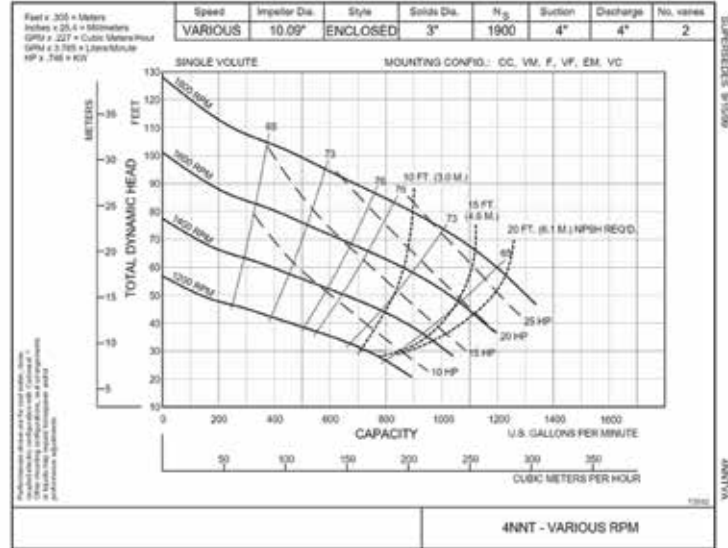
Horsepower	74 HP
Fuel Tank Capacity	96 GAL
Max Flow	2800 GPM @ 52' TDH/23 PSI
Max TDH	140' TDH/60 PSI @ 250 GPM
BEP	1900 GPM @ 85' TDH / 37 PSI



[PUMPS]

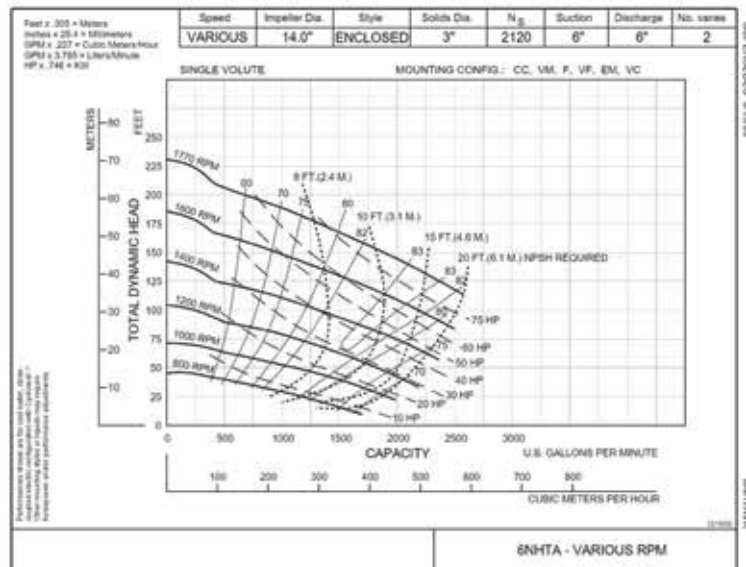
4" X 4" VAC ASSIST PUMP (4NNT)

Horsepower	49 HP
Fuel Tank Capacity	96 GAL
Max Flow	1340 GPM @ 46' TDH/20 PSI
Max TDH	120' TDH/52 PSI @100 GPM
BEP	840 GPM @ 82' TDH / 35 PSI



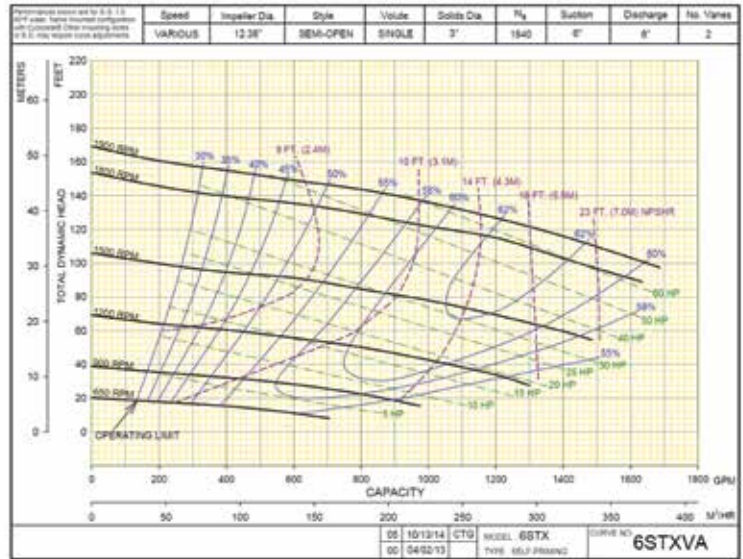
SUPER 6 PUMP (6NHTA)

Horsepower	125 HP
Fuel Tank Capacity	96 GAL
Max Flow	2900 GPM @ 145' TDH / 63 PSI
Max TDH	285' TDH/124 PSI @ 250 GPM
BEP	2500 GPM @ 170' TDH/74 PSI



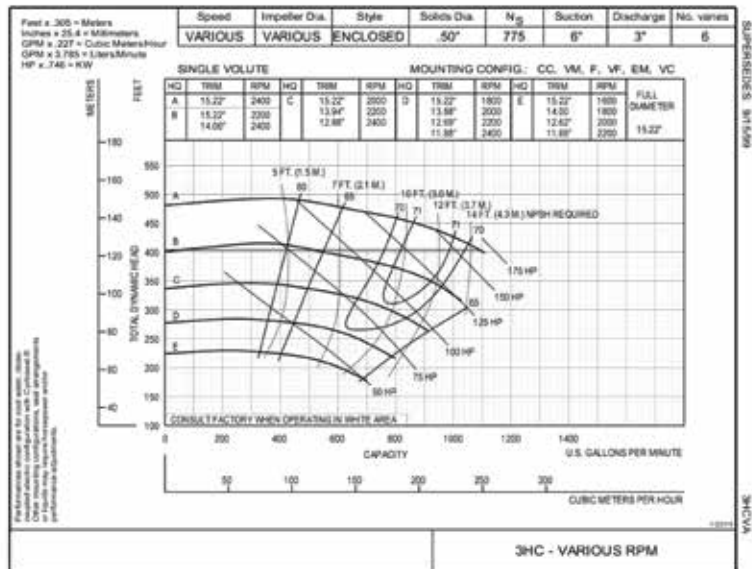
6" X 6" WET PRIME TRASH PUMP (6STX)

Horsepower	74 HP
Fuel Tank Capacity	96 GAL
Max Flow	1690 GPM @ 95' TDH/41 PSI
Max TDH	160' TDH/69 PSI @ 200 GPM
BEP	1350 GPM @ 120' TDH/52 PSI



6" X 3" HIGH HEAD VAC ASSIST PUMP (3HC)

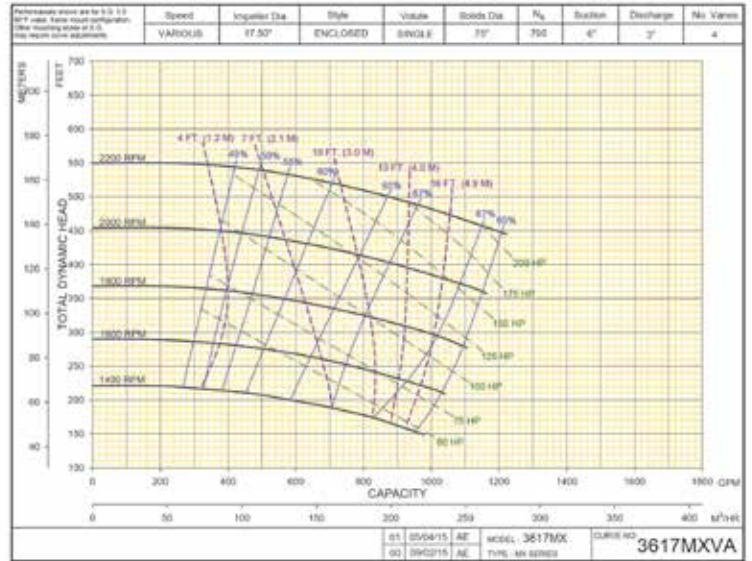
Horsepower	125 HP
Fuel Tank Capacity	96 GAL on Single Axle Pkg
Max Flow	1400 GPM @ 290' TDH/125 PSI
Max TDH	400' TDH/173 PSI @ 500 GPM
BEP	875 GPM @ 360' TDH/156 PSI



[PUMPS]

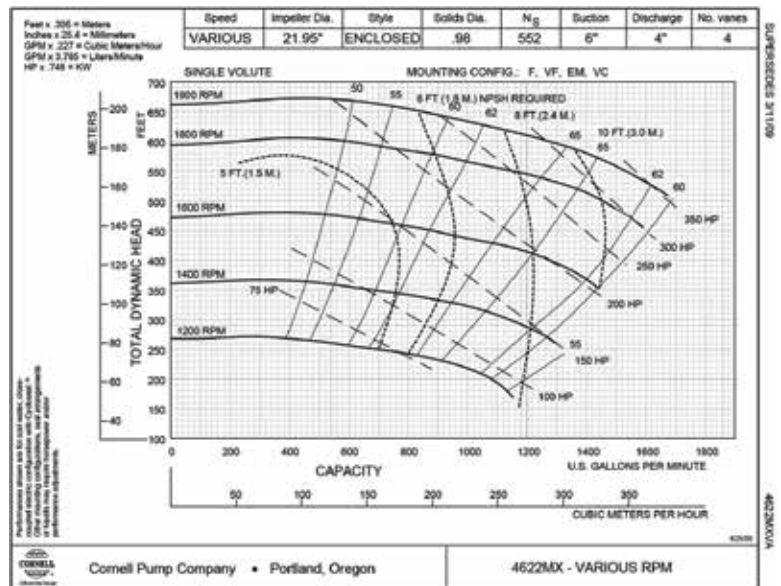
SUPER 6" X 3" VAC ASSIST PUMP (3617MX)

Horsepower	174 HP
Fuel Tank Capacity	96 GAL
Max Flow	1200 GPM @ 380' TDH / 165 PSI
Max TDH	550' TDH/238 PSI @ 100 GPM
BEP	1000 GPM @ 400' TDH/173 PSI



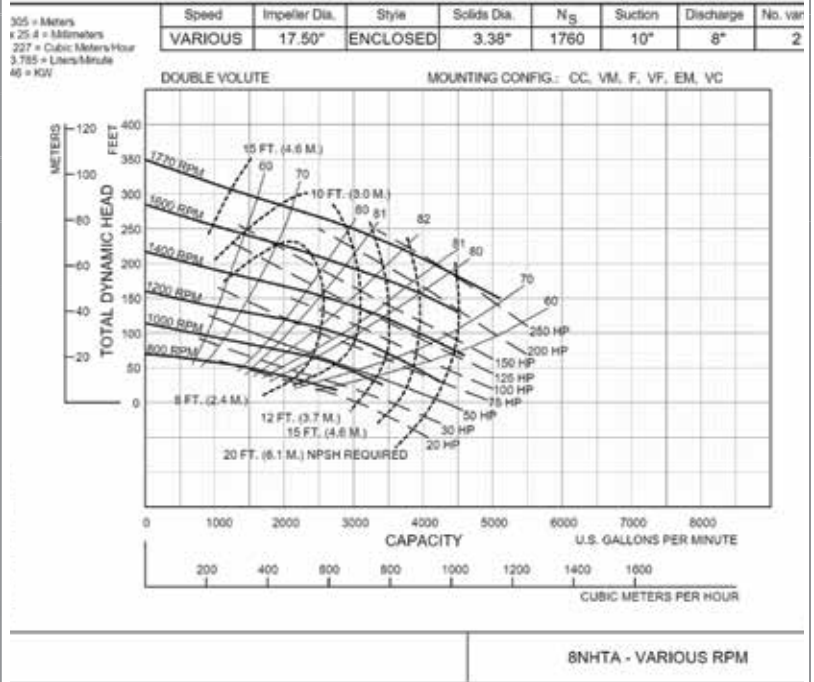
6" X 4" HIGH HEAD VAC ASSIST PUMP (4622MX)

Horsepower	325 HP
Fuel Tank Capacity	250 GAL
Max Flow	1650 GPM @ 460' TDH/200 PSI
Max TDH	625' TDH/270 PSI @ 200 GPM
BEP	N/A



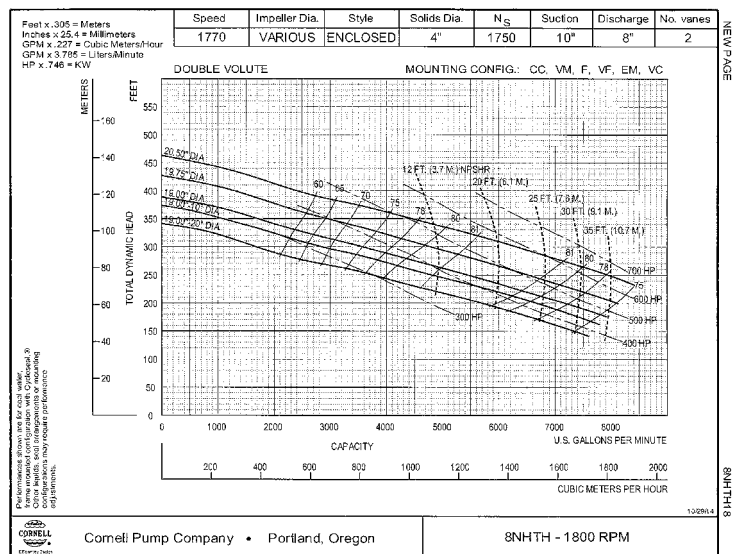
10" X 8" WATER TRANSFER PUMP - 325 HP (8NHTA)

Horsepower	325 HP
Fuel Tank Capacity	160 GAL
Max Flow	5100 GPM @ 150' TDH/65 PSI
Max TDH	350' TDH/152 PSI @ 500 GPM
BEP	3900 GPM @ 240' TDH/104 PSI



10" X 8" WATER TRANSFER PUMP - 600 HP (8NHTH)

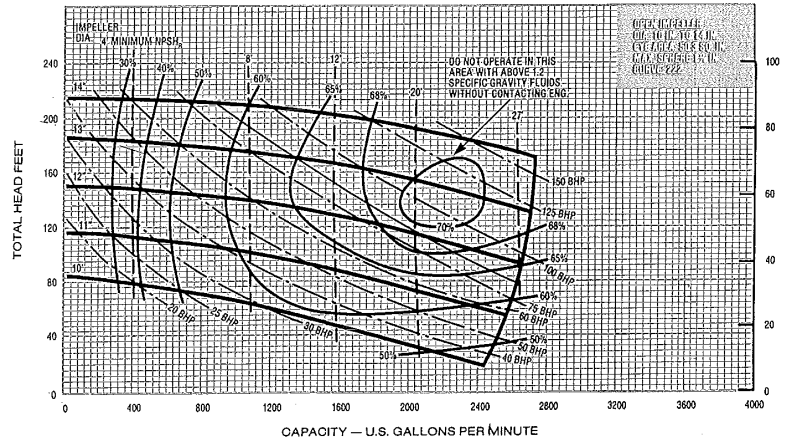
Horsepower	600 HP
Fuel Tank Capacity	180 GAL
Max Flow	8100 GPM @ 225' TDH/97 PSI
Max TDH	425' TDH/184 PSI @ 500 GPM
BEP	5700 GPM @ 325' TDH/140 PSI



[PUMPS]

8" X 6" X 14" CENTRIFUGAL DIESEL PUMP

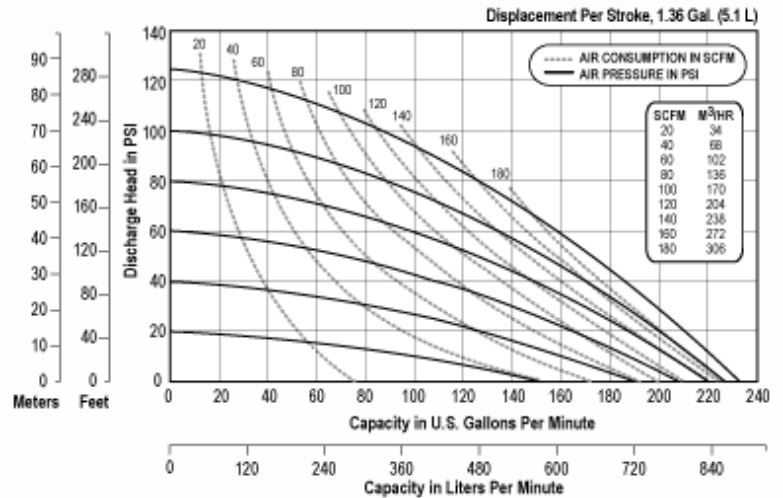
Horsepower	174 HP
Fuel Tank Capacity	380 GAL
Max Flow	2600 GPM @ 190' TDH / 82 PSI
Max TDH	220' TDH / 95 PSI @ 200 GPM
BEP	2000 GPM @ 150' TDH / 65 PSI



[PUMPS]

3" AIR DIAPHRAGM PUMP

Horsepower	N/A- Air
Fuel Tank Capacity	N/A
Max Flow	240 GPM @ 10 PSI
Max TDH	120 PSI @ 20 GPM
BEP	N/A



W-440 TRIPLEX PUMP

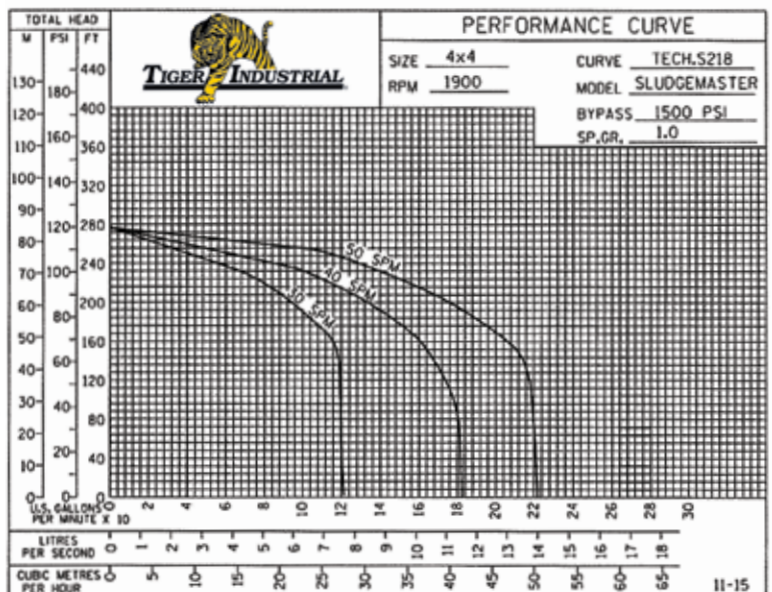
Horsepower	440 HP
Fuel Tank Capacity	100 GAL
Max Flow	397 GPM
Max TDH	Varies depending on liners
BEP	Varies depending on liners



W-440		HP	260	320	380	440
		SPM	510	660	810	960
LINER SIZE	MAX PSI	GPS	GPM			
3	3327	.184	94	121	149	204
3 1/2	2816	.25	127	165	202	240
3 3/4	2468	.287	146	189	232	275
4	2169	.326	167	215	264	313
4 1/4	1917	.368	188	243	299	354
4 1/2	1710	.413	211	273	335	397

SLUDGE MASTER 4" POPPET PUMP

Horsepower	35 HP
Fuel Tank Capacity	100 GAL
Max Flow	220 GPM @ 46' TDH/20 PSI
Max TDH	280' TDH/121 PSI @ 30 GPM
BEP	160 GPM @ 170' TDH/74 PSI



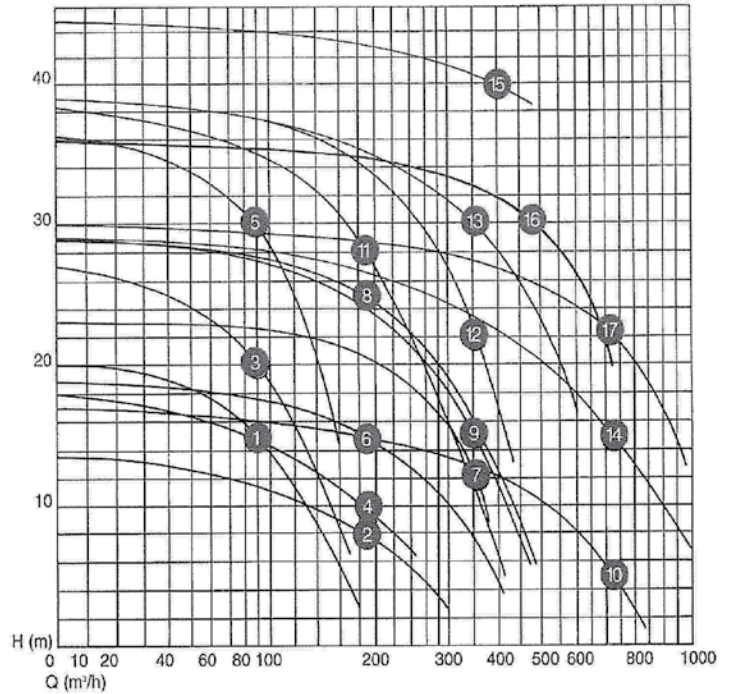
[PUMPS]

8" ELECTRIC SLUDGE / DREDGE PUMP (TOYO DP 50 B-4)

Horsepower	50 HP
Fuel Tank Capacity	N/A
Max Flow	2,000 GPM @ 17' TDH / 7 PSI
Max TDH	92' TDH / 40 PSI @ 130 GPM
BEP	1210 GPM @ 65' TDH / 28 PSI



Performance curves



[PUMPS]

COKE CUTTING PUMPS & SERVICES

Horsepower	2500 HP
Fuel Tank Capacity	380 GAL
Max Flow	23 BBL
Max TDH	4242
BEP	10BPM @ 4242' TDH / 9800 PSI

The Tiger Coke Cutting Pump is designed and built to withstand the harsh environments of hydraulic fracturing in oil and gas fields around the world. The unit consists of a high horsepower engine, high ambient radiator, transmission and high pressure positive displacement quintuplex pump and can be operated from the local control panel or by remote control. Contact us today to set up a **no cost** on site assessment of your facility and equipment.



12' ROAD CROSSING MANIFOLD

L x W x H	12' x 48" x 6"
Inlet/Outlet	12" or 8" 150# Flange
Max Pressure	75 PSI

24' ROAD CROSSING MANIFOLD

L x W x H	24' x 48" x 6"
Inlet/Outlet	12" or 8" 150# Flange
Max Pressure	75 PSI



CONTAINMENT BERM

L x W x H	6' x 6' x 12"
L x W x H	12' x 12' x 12"
L x W x H	25' x 12' x 12"
L x W x H	50' x 12' x 12"

OPTIONAL ACCESSORIES

- Pressure Washer
- Felt Pad
- Duck Bill Vac Attachment



[MANIFOLDS & CONTAINMENT BERMS]





RELIABILITY

HIGHEST SERVICE STANDARDS QUALITY, SERVICE & URGENT RESPONSE

At Tiger Industrial, we run strict quality-control programs on our generator fleet, along with, all of our equipment. We meet or exceed the highest safety standards. Tiger maintains an extensive backup fleet, from the Permian Basin in West Texas to central Louisiana, so we are ready to respond to your every need at a moment's notice.

GENERATORS

- 25 kVA Portable Generators
- 45 kVA Portable Generators
- 85 kVA Portable Generators
- 125 kVA Portable Generators
- 150 kVA Portable Generators
- 220 kVA Portable Generators
- 300 kVA Portable Generators
- 4,000 Watt & LED Portable Light Towers

OPTIONAL ACCESSORIES

- 12' X 12' Containment Berm
- 50' Extension Cord
- Auxiliary Fuel Tank
- 100 Amp Distribution Box

25 KVA PORTABLE GENERATOR

L x W x H		10' x 5' x 5'	
Standby Output		22 KW	
Prime Output		20 KW	
Weight		2,200 LBS	
Fuel Cap		42 GAL	
Run Time		30 HRS	
AMP DRAW		FUEL CONSUMPTION	
1PH 120V	55 AMPS	Full Load	1.65 GPH
1PH 240V	27 AMPS	3/4 Load	1.3 GPH
3PH 240V	60 AMPS	1/2 Load	0.9 GPH
3PH 480V	30 AMPS		



45 KVA PORTABLE GENERATOR

L x W x H		12' x 6' x 8'	
Standby Output		37 KW	
Prime Output		36 KW	
Weight		2,940 LBS	
Fuel Cap		30 GAL	
Run Time		22 HRS	
AMP DRAW		FUEL CONSUMPTION	
1PH 120V	100 AMPS	Full Load	3.1 GPH
1PH 240V	50 AMPS	3/4 Load	2.2 GPH
3PH 240V	108 AMPS	1/2 Load	1.6 GPH
3PH 480V	54 AMPS		



85 KVA PORTABLE GENERATOR

L x W x H		12' x 6' x 8'	
Standby Output		70 KW	
Prime Output		66 KW	
Weight		5,000 LBS	
Fuel Cap		127 GAL	
Run Time		22 HRS	
AMP DRAW		FUEL CONSUMPTION	
1PH 120V	188 AMPS	Full Load	5.5 GPH
1PH 240V	95 AMPS	3/4 Load	3.8 GPH
3PH 240V	204 AMPS	1/2 Load	2.6 GPH
3PH 480V	102 AMPS		



125 KVA PORTABLE GENERATOR

L x W x H		12' x 6' x 8'	
Standby Output		110 KW	
Prime Output		100 KW	
Weight		6,900 LBS	
Fuel Cap		169 GAL	
Run Time		23 HRS	
AMP DRAW		FUEL CONSUMPTION	
1PH 120V	277 AMPS	Full Load	7.3 GPH
1PH 240V	139 AMPS	3/4 Load	5.7 GPH
3PH 240V	300 AMPS	1/2 Load	4.0 GPH
3PH 480V	150 AMPS		



150 KVA PORTABLE GENERATOR

L x W x H		12' x 6' x 8'	
Standby Output		132 KW	
Prime Output		120 KW	
Weight		9,278 LBS	
Fuel Cap		214 GAL	
Run Time		25 HRS	
AMP DRAW		FUEL CONSUMPTION	
1PH 120V	333 AMPS	Full Load	8.4 GPH
1PH 240V	166 AMPS	3/4 Load	6.5 GPH
3PH 240V	361 AMPS	1/2 Load	4.9 GPH
3PH 480V	180 AMPS		



220 KVA PORTABLE GENERATOR

L x W x H		16' x 6' x 8'	
Standby Output		194 KW	
Prime Output		176 KW	
Weight		6,900 LBS	
Fuel Cap		214 GAL	
Run Time		21 HRS	
AMP DRAW		FUEL CONSUMPTION	
1PH 120V	488 AMPS	Full Load	13.6 GPH
1PH 240V	244 AMPS	3/4 Load	10.4 GPH
3PH 240V	529 AMPS	1/2 Load	7.7 GPH
3PH 480V	264 AMPS		



300 KVA PORTABLE GENERATOR

L x W x H	16' x 6' x 11'		
Standby Output	264 KW		
Prime Output	240 KW		
Weight	13,000 LBS		
Fuel Cap	300 GAL		
Run Time	21 HRS		
AMP DRAW		FUEL CONSUMPTION	
1PH 120V	667 AMPS	Full Load	15 GPH
1PH 240V	333 AMPS	3/4 Load	14 GPH
3PH 240V	722 AMPS	1/2 Load	11 GPH
3PH 480V	361 AMPS		



LED PORTABLE LIGHT TOWER

L x W x H	716" x 98" x 348"
Weight	1,720 LBS
Fuel Cap	30 GAL
Run Time	50 HR
Lumens	542,000
Stabilizer	Four-Point Outrigger System

- SHO-HD® Lamp Fixture – 4 Metal Halide Lamps Only
- SLS™ Sequenced Light System™
- Gull-Wing Style Doors – Reaction injection molded doors providing strength and corrosion resistance
- Forklift Pockets and Lifting Eye
- 30 Gallon Polyethylene Fuel Tank
- Four-Point Outrigger System
- GPS Ready
- 59° Fixture Rotation
- 55 mph Operating Wind Speed Rating



[GENERATORS]

4,000 WATT PORTABLE LIGHT TOWER

L x W x H	173" x 50" x 70"
Max Height	32'
Weight	1,644 LBS
Fuel Cap	30 GAL
Run Time	48 HR
Lumens	440,000
Ball Hitch	2"
Light Coverage	5-7 ACRES
Sound Level	66 DB



DEPENDABLE



GETTING IT DONE RIGHT

HIGHEST QUALITY & PERFORMANCE

When it comes to washers & cleaners, Tiger Industrial keeps a large diverse fleet of pressure washers, steam cleaners and hydroblasters prepped for immediate deployment.

Our team of experts will help you select the right type of equipment for the job. Additionally, we can readily verify which pieces of equipment you are currently renting, to help you better plan for upcoming projects.

PRESSURE WASHERS AND HYDROBLASTERS

- 3,500 to 40,000 psi
- Air-operated screen cleaners
- Hot water up to 5,000 psi
- Diesel and electric
- Explosion-proof
- Steam generators for de-icing and de-gassing

HEATED MYERS PUMP

L x W x H	19' x 8' x 7'
Weight	8,250 LBS
Fuel Capacity	30 GAL
Water Capacity	500 GAL
Run Time	4 HRS
Temperature	170° Fahrenheit
GPM	30 GPM & 60 GPM
Pressure	2,500 PSI
Hose Length	300' ON THE REEL
Trailer Ball	2 5/16"

OPTIONAL ACCESSORIES

- Extended Length Gun
- Additional Tip Sizes
- Turbo Gun
- Wash Heights to 35'



COLD WATER MYERS PUMP

L x W x H	19' x 8' x 7'
Weight	6,500 LBS
Fuel Capacity	30 GAL
Water Capacity	500 GAL
Run Time	6 HRS
GPM	30 GPM & 60 GPM
Pressure	2,500 PSI
Hose Length	300'
Trailer Ball	2 5/16"

OPTIONAL ACCESSORIES

- Extended Length Gun
- Additional Tip Sizes
- Turbo Gun
- Wash Heights to 35'



3,000 PSI DIESEL PRESSURE WASHER

L x W x H	47" x 32" x 35"
Weight	375 LBS

OPTIONAL ACCESSORIES

- Emergency Shut-off
- Chemical Suction Tube
- Spark Arrester Muffler
- Drip Pan
- Easy Roll Wheels
- Galvanized Cage
- 4 GAL per Minute



PRESSURE WASHERS

TRAILER MOUNT HOT WATER PRESSURE WASHER OPTIONAL ACCESSORIES

- Turbo Nozzle
- 3/8" x 50' Pressure Hose
- Foot Pedal
- Flex Lance
- Double Trigger Gun
- Extension Wand
- 30" Hydro Mower

4,000 PSI TRAILER MOUNT HOT WATER PRESSURE WASHER

Skid Mount L x W x H	54" x 48" x 50"
Trailer Mount LxWxH	19' x 8' x 6'
Weight	6,500 LBS
Fuel Capacity	18 GAL
Water Capacity	325 GAL
Run Time	4 HRS
Temperature	160° Fahrenheit
Trailer Ball	2" OR 2 5/16"
GPM	6 GPM
Engine	25 HP Kubota Diesel



4,000 PSI TRAILER MOUNT HOT WATER PRESSURE WASHER 2-SKID (DOUBLE TROUBLE)

Skid Mount L x W x H	54" x 48" x 50"
Trailer Mnt L x W x H	19' x 8' x 6'
Weight	8,000 LBS
Fuel Capacity	36 GAL
Water Capacity	325 GAL
Run Time	4 HRS
Temperature	160° Fahrenheit
Trailer Ball	2" OR 2 5/16"
GPM	6 GPM
Engine	25 HP Kubota Diesel



[PRESSURE WASHERS]



HYDROBLASTERS

HYDROBLASTER OPTIONAL ACCESSORIES

- Turbo Nozzle
- Foot Pedal
- Double Trigger Gun
- 3D Nozzle

10K PSI @ 52 GPM

Weight	9,450 LBS
Fuel Cap	250 GAL
Run Time	22 HRS
Water Inlet	1" Crow Foot
Water Outlet	13 MM MP

OPTIONAL ACCESSORIES

- Turbo Nozzle**
- 1/2" X 50' Blast Hose

20K PSI @ 24 GPM

Weight	9,450 LBS
Fuel Cap	250 GAL
Run Time	22 HRS
Water Inlet	1" Crow Foot
Water Outlet	13 MM MP

OPTIONAL ACCESSORIES

- Turbo Nozzle**
- 3 MM x 50' Blast Hose

40K PSI @ 11 GPM

Weight	9,450 LBS
Fuel Cap	250 GAL
Run Time	22 HRS
Water Inlet	1" Crow Foot
Water Outlet	8 MM MP

OPTIONAL ACCESSORIES

- Turbo Nozzle**
- 5 Mm (or 8 MM) x 50' Blast Hose



[HYDROBLASTERS]

10K PSI LOW VOLUME HYDROBLASTER

(L x W x H)	104" x 60" x 60"
Horsepower	85 HP
Fuel Capacity	12 GAL
Shipping Weight	3,650 LBS
Max PSI	10,000 PSI

OPTIONAL ACCESSORIES

- Foot Pedal with Flex Lance available





FLEXIBILITY

FUEL PODS, TANKS & SKIPS

DURABLE, VERSATILE & LONG LASTING

No matter what your project requirements are, Tiger has the right equipment for the job. Our fleet of fuel pods, tanks and skips are built to last. Our units are constructed of the toughest materials. Plus there are ample options for specialized uses, such as additional tie downs, saddle support for containing round objects and side door access for easy loading on some baskets. Our units meet industry standards for labeling details such as load capability. With the flexibility in our fleet, you are able to source exactly the right units for every job you need to accomplish.

528 GAL DOUBLE WALL FUEL POD

L x W x H	87" x 46" x 52"
Containment	110% Secondary Containment
Capacity	1,825 LBS Empty/5,574 LBS Full

- Internal Baffles
- Secure Hose Access
- Full Load Lifting Eyes
- Tie Down Points
- Direct to Machinery Fuel Ports

OPTIONAL ACCESSORIES

- 16' Tandem Trailer
- 110V Fuel Pump
- Fuel Pump - 12V Fuel Pump & Solar Panel



550 GAL STAINLESS STEEL TRANSPORT TANK

L x W x H	56" x 50" x 75"
Gross Weight	9,385 LBS
Tare Weight	628 LBS

OPTIONAL ACCESSORIES

- 4 Point Sling



2 & 3 YARD TILT HOPPERS

L x W x H	70.5" x 63.5" x 61"
Gross Weight	10,000 LBS
Tare Weight	1,542 LBS
Max Cap	3 CU YD



6' X 12' SLANT NOSE SKIP PAN

DIMENSIONS	L X W X H	
External (MM)	3,776 x 1,839 x 1,554	
External (FT)	12'4" x 6' x 5'1"	
Internal (MM)	3,680 x 1,700 x 1,300	
Internal (FT)	12'1" x 5'7" x 4'3"	
WEIGHT	KGS	LBS
Tare	1,600	3,527
Payload	5,900	13,007
Max Gross Weight	7,500	16,534



4' X 8' BASKET

DIMENSIONS	L X W X H	
External (MM)	2,438 x 1,270 x 1,130	
External (FT)	8' x 4'2" x 3'8"	
Internal (MM)	2,273 x 1,080 x 914	
Internal (FT)	7'5" x 3'7" x 3'	
WEIGHT	KGS	LBS
Tare	748	1,650
Payload	5,216	11,500
Max Gross Weight	5,964	13,150



4' X 12' SCAFFOLD BASKET

DIMENSIONS	L X W X H	
External (MM)	3,904 x 1,307 x 1,200	
External (FT)	12'10" x 4'3" x 3'11"	
Internal (MM)	3,561 x 1,082 x 924	
Internal (FT)	11'8" x 3'6" x 3'	
WEIGHT	KGS	LBS
Tare	1,810	3,990
Payload	6,718	14,810
Max Gross Weight	8,528	18,800



6' X 12' BASKET

DIMENSIONS	L X W X H	
External (MM)	3,710 x 1,985 x 1,245	
External (FT)	12'2" x 6'6" x 4'1"	
Internal (MM)	3,510 x 1,655 x 895	
Internal (FT)	11'6" x 5'5" x 2'11"	
WEIGHT	KGS	LBS
Tare	1,720	3,792
Payload	6,220	13,713
Max Gross Weight	7,940	17,505





TAPE
LIMIT

266-6-1



TIGER INDUSTRIAL LOCATIONS

Beaumont, Texas

1313 Gulf Street
Beaumont, TX 77701

Victoria, Texas

11901 US Highway 59,
N. Victoria, TX 77905

Dilley, Texas

13400 S. Interstate 35
Dilley, TX 78017

Houston, Texas

7000 Decker Dr.
Baytown, TX 77520

Corpus Christi, Texas

8283 Leopard St.
Corpus Christi TX 78409

Midland, Texas

13014 West County Road
100, Midland, TX 79765

24/7 Dispatch: 888-866-0047 / 409-832-9336 / TigerIndustrialRentals.com



Scan to view Tiger's
capabilities video >

