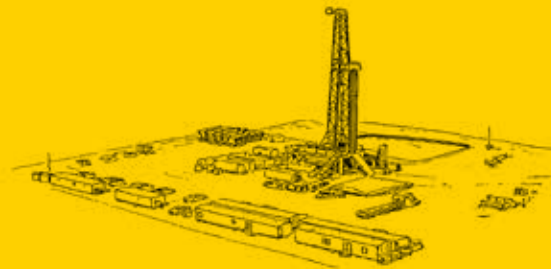


INDUSTRIAL RENTAL EQUIPMENT

Providing the most reliable rental equipment with a huge fleet of inventory for upstream drilling & completions jobs.

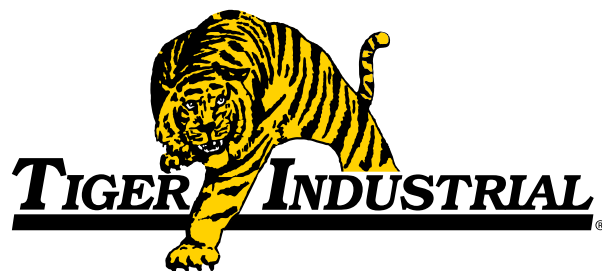


UPSTREAM CATALOG



Suppling Dependable
Surface Rental Equipment.

That's the mark of Tiger.



When it comes to supplying essential rental equipment, you need a reliable company that gets the job done right.

That's the mark of Tiger.

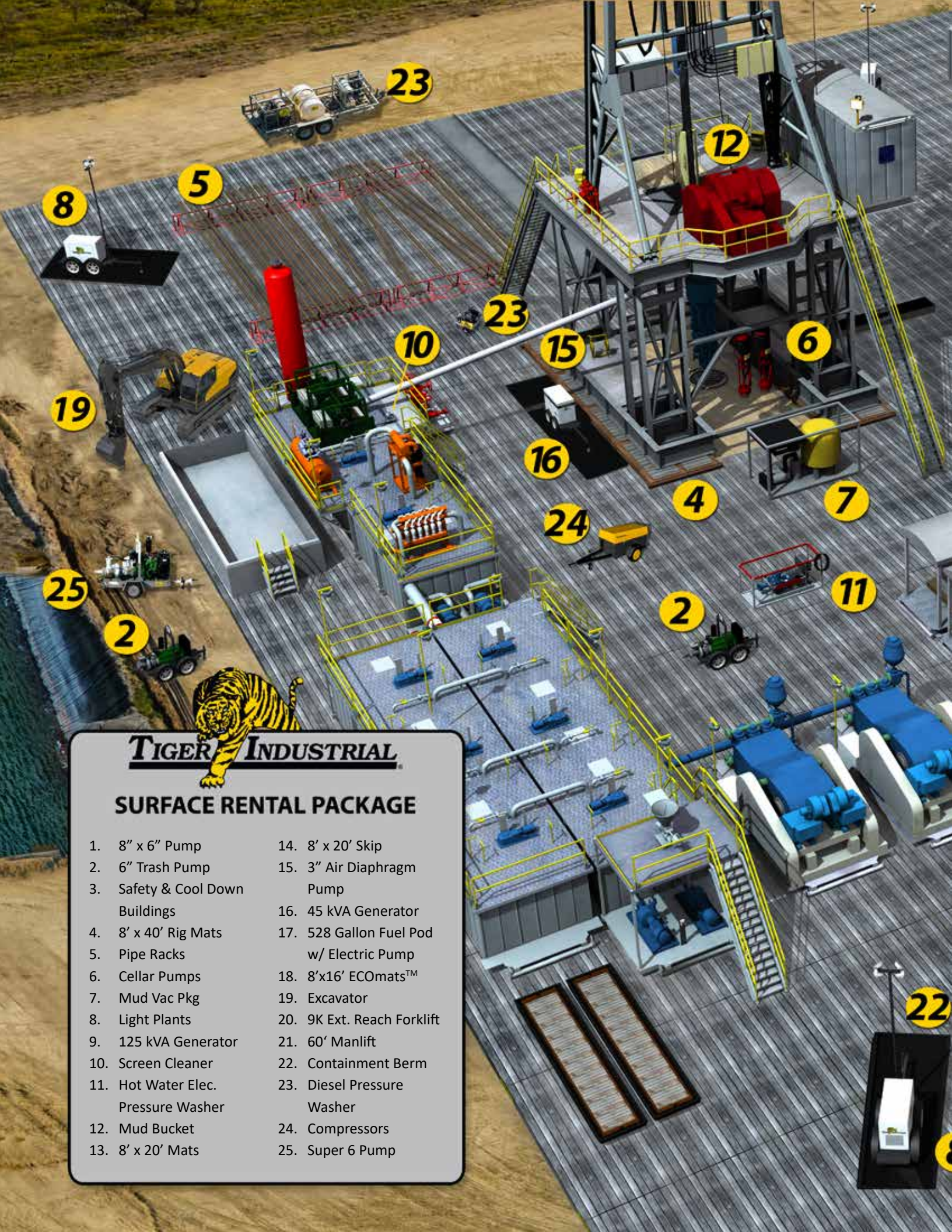


SCAN to view the
our capabilities video



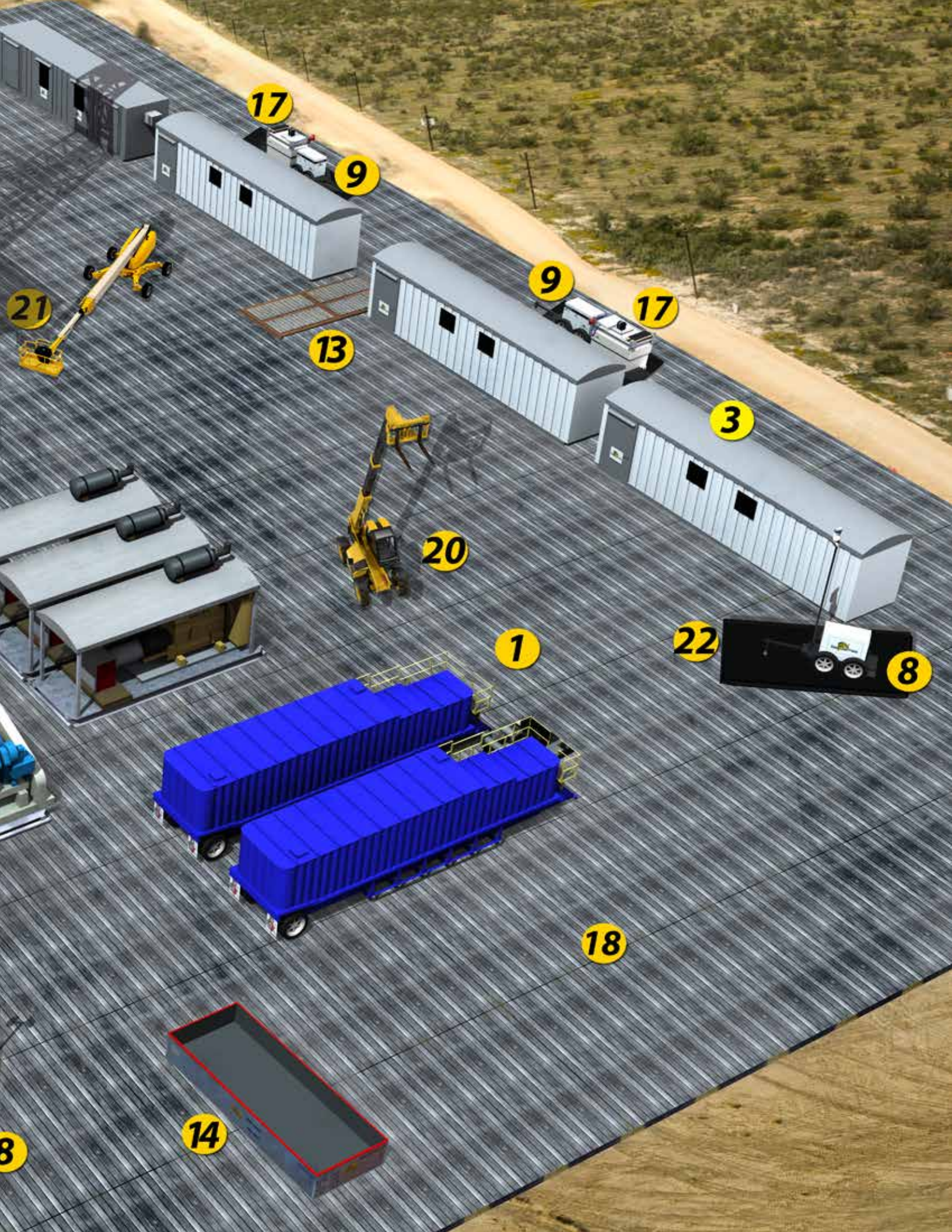
UPSTREAM RENTAL EQUIPMENT TABLE OF CONTENTS

SURFACE RENTAL PACKAGE	4	125 kVA Portable Generator	28
		150 kVA Portable Generator	28
MATS	6	220 kVA Portable Generator	28
ECOmats™	8	300 kVA Portable Generator	29
Tiger Poly Mats	10	Generator with Water Tank Combo Unit	29
Tiger Laminate Mats	12		
Tiger Traditional Wood Mats	14	LED Portable Light Tower	31
		4,000 Watt Portable Light Tower	31
PUMPS	16		
6" x 6" Vac-Assist Pumps (6612T)	19	CLEANING & WASHING UNITS	32
6" x 6" Vac-Assist Pumps (6NNT)	19	4K PSI Trailer Mount Hot Water Pressure Washer	33
4" x 4" Vac-Assist Pump (4NNT)	20	4K PSI Trailer Mount Hot Water Pressure Washer	
Super 6 Pump (6NHTA)	20	2 Skid (Double Trouble)	33
6" x 6" Wet Prime Trash Pump (6STX)	21	Air Operated Screen Cleaner	34
6" x 3" High Head Vac-Assist Pump (3HC)	21	Electric Screen Cleaner	34
Super 6" x 3" Vac-Assist Pump (3617MX)	22	3K PSI Electric Explosion Proof Hot Water Washer	34
6" x 4" High Head Vac-Assist Pump (4622MX)	22	30 HP Tiger Electric Vac	35
10" x 8" Water Transfer Pump - 325 HP (8NHTA)	23	50 HP Tiger Electric Vac	35
10" x 8" Water Transfer Pump - 600 HP (8NHHTH)	23		
8" x 6" x 14" Centrifugal Diesel Pump	24	BLAST RESISTANT BUILDINGS	36
3" Air Diaphragm Pump	24	8' x 40' Safety Cool Down Building	37
4" Cellar Pump	25		
4" Floating Skimmer Pump	25	MISCELLANEOUS EQUIPMENT	38
		Pipe Rack	39
GENERATORS & LIGHT TOWERS	26	Mud Bucket	39
25 kVA Portable Generator	27	528 Gallon Double Wall Fuel Pod	39
45 kVA Portable Generator	27	12' & 24' Road Crossing Manifold	40
85 kVA Portable Generator	27	Containment Berm	40



SURFACE RENTAL PACKAGE

- | | |
|-------------------------------------|--|
| 1. 8" x 6" Pump | 14. 8' x 20' Skip |
| 2. 6" Trash Pump | 15. 3" Air Diaphragm Pump |
| 3. Safety & Cool Down Buildings | 16. 45 kVA Generator |
| 4. 8' x 40' Rig Mats | 17. 528 Gallon Fuel Pod w/ Electric Pump |
| 5. Pipe Racks | 18. 8'x16' ECOmats™ |
| 6. Cellar Pumps | 19. Excavator |
| 7. Mud Vac Pkg | 20. 9K Ext. Reach Forklift |
| 8. Light Plants | 21. 60' Manlift |
| 9. 125 kVA Generator | 22. Containment Berm |
| 10. Screen Cleaner | 23. Diesel Pressure Washer |
| 11. Hot Water Elec. Pressure Washer | 24. Compressors |
| 12. Mud Bucket | 25. Super 6 Pump |
| 13. 8' x 20' Mats | |



17

9

9

17

21

13

3

20

1

22

8

18

14

8

4+

UNIQUE MATTING SOLUTIONS

VE

TIGER NOV

Nobody can move mats like us. Our unique advantages to fit your specific needs. Our fleet of mats encompasses solutions for construction, frac sand, completion, and more.

At Tiger, we have an agnostic approach. We can offer assistance in selecting the right mat for your project - get it to you - ASAP. Whether you want to rent or buy.



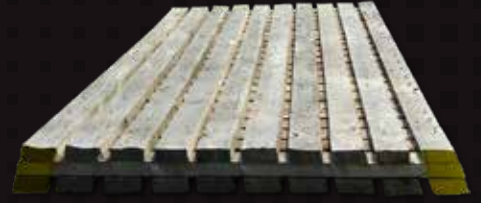
ECOMATS™

TIGER INDUSTRIAL RENTALS HAS MORE MATTING SOLUTIONS

TIGER HAS MORE MATTING SOLUTIONS

Tiger! We now have 4 matting solutions for clients in the energy industry. Each mat has distinct individual uses. Our diverse selection can be used in an Upstream, Midstream or Downstream work-site. Our combined solutions for integrity pipeline work, access roads, tank farms, refineries, high lines, train derailments, commercial sites, and many others.

From mat rentals, we believe in all of them and have a mat for every application. Our highly skilled team will find the right mat for the right job, but if you have a preference for a specific mat, tell us what you want and we will provide it. Whether you want composite, timber or laminated, Tiger has the mat for you. Call us today for more details.



TIGER POLY MATS



TIGER LAMINATE MATS



TIGER TRADITIONAL WOOD MATS



SAFER | DURABLE | LONG LASTING

STANDARD SPECIFICATIONS

SIZE	8' x 16'
SQ FT	128 sf
WEIGHT	3,000 lbs
MATS/ TRUCK	14/15
CONNECTING	Directly
PSI	3,910
LINEAR FT / TRUCK	112
CONSTRUCTION	HDPE+
THICKNESS	4"

The ECOMat™, stays on the job longer and saves both replacement and transport costs. Able to haul up to 15/16 ECOMats™ per load. That means fewer trips, fewer trucks, fewer drivers, a lot less fuel and a lot more savings.



DURABILITY

ADVANTAGES

- Maximum Durability
- Extreme Life
- Very Contractor Friendly
- Fast & Easy to Lay
- Traceable with RFID Chip
- Unbeatable High PSI
- Traction
- No Nails
- No Cable Loops
- No Pinning Required
- Flame Spread Rated
- No Absorption & Won't Float
- Compact Design / Endcaps
- Repairable



ECOMATS™



TIGER POLY MAT

STRONG | HEAVY-DUTY | SAFE

STANDARD SPECIFICATIONS

SIZE	6.5' X 13'4"
SQ FT	86 sf
WEIGHT	1,095 lbs
MATS/ TRUCK	40
CONNECTING	8 Pin
PSI	600
LINEAR FT / TRUCK	260
CONSTRUCTION	HDPE+
THICKNESS	4"

The Tiger Poly Mat will not warp, rot, crack, or delaminate, and contains no unsafe chemicals. The cross-ribbed interior distributes weight across the entire panel providing a strong support structure. They are properly sized to easily ship 40 mats in standard ISO containers and flatbed trailers.

STRONGER

ADVANTAGES

- Long Life
- High PSI
- No Nails or Gaps
- Easy Cleaning/No Absorption
- Heavy Duty CAM Locking System
- Non-Conductive
- Excellent with Sub-Base
- Ships in Containers
- Great for a Sand Surface
- Strong Support Structure
- Inventory Control
- Flame Spread Rated



[TIGER POLY MATS]





TIGER LAMINATE MAT

LIGHTER | FASTER | LONGER LIFE

STANDARD SPECIFICATIONS

SIZE	8' X 16'
SQ FT	128 sf
WEIGHT	1,406 lbs
MATS/ TRUCK	30/32
CONNECTING	Directly
PSI	Site Specific
LINEAR FT / TRUCK	256
CONSTRUCTION	Southern Yellow Pine
THICKNESS	4.125"

At less than half the weight of a traditional bolted oak access mat, the Tiger Laminate Mat is twice as strong and 5 times stiffer. The revolutionary design has a solid top making them easy to clean and prevent the migration of site to site contamination.

EFFICIENT

ADVANTAGES

- Big Freight Advantage
- Very Economical
- No Nails
- Longer Life than Traditional Wood
- No Gaps
- No Cable Loops
- Very Contractor Friendly
- Repairable
- Maximum Durability
- Longer Life
- Superior Strength
- Sustainability
- Faster Installation



[TIGER LAMINATE MATS]





TIGER TRADITIONAL WOOD MAT

LOW COST | RIGID

STANDARD SPECIFICATIONS

SIZE	8' X 16'
SQ FT	128 sf
WEIGHT	3,000 lbs
MATS/ TRUCK	14/15
CONNECTING	Directly
PSI	N/A
LINEAR FT / TRUCK	112
CONSTRUCTION	Mixed Hardwood
THICKNESS	5.5"

Tiger Hardwood Mats are used around the world for truck mats, mud mats, construction mats, swamp mats, and ground protection. Made for concrete or general construction temporary roads.



AFFORDABLE

ADVANTAGES

- Hardwood Construction
- Economical
- Low Replacement Cost
- Very Rigid
- Accepted by Contractors at Job Sites Worldwide
- All Weather Access
- Heavy-Duty with Mixed Hardwood and Oak Laminate Boards
- 3-Ply Design for Durability & Strength



[TIGER TRADITIONAL WOOD MATS]



When it comes to supplying essential rental equipment, you need a reliable company that gets the job done right.

That's the mark of Tiger.





SCAN to view the
our capabilities video





RESPONSIVE



TIGER DELIVERS OUR READY LINE IS UP AND READY

We keep a large fleet of pumps prepped for immediate deployment. Every piece of equipment we offer is put through a rigorous maintenance regimen to ensure the highest quality and performance.

Our knowledgeable personnel will help you select the right pump for the job, and we're available around the clock to offer any support you may need.

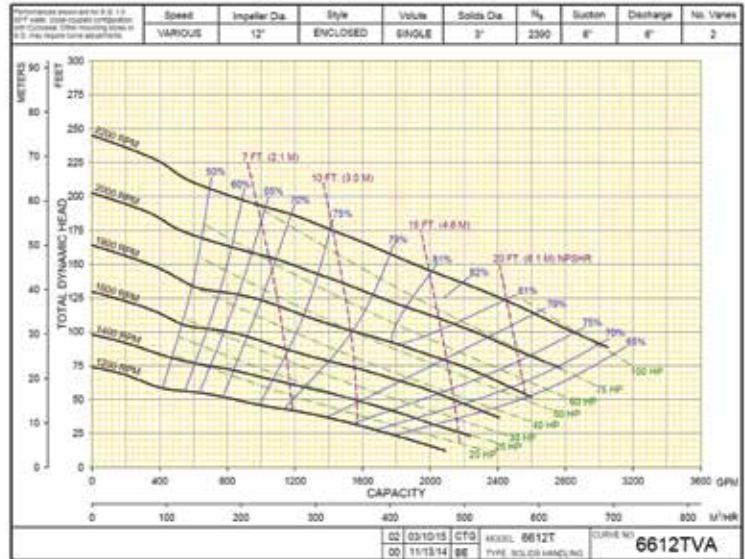
PUMPS:

- Centrifugal
- Trash
- Water Transfer
- Vac Assist
- Air-Operated
- Diesel & Electric

6" X 6" VAC ASSIST PUMP (6612T)



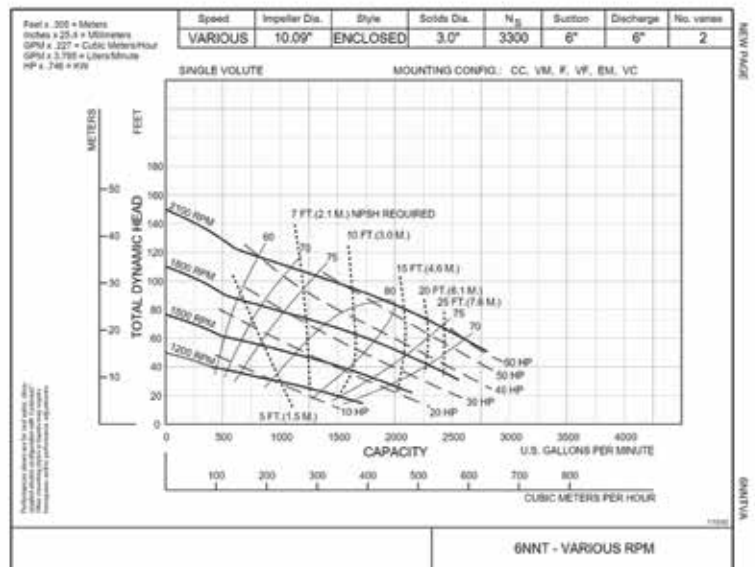
Horsepower	74 HP
Fuel Tank Capacity	96 GAL
Max Flow	2750 GPM @ 75' TDH / 33 PSI
Max TDH	190' TDH/82 PSI @ 1000 GPM
BEP	2100 GPM @ 115' TDH/50 PSI



6" X 6" VAC ASSIST PUMP (6NNT)



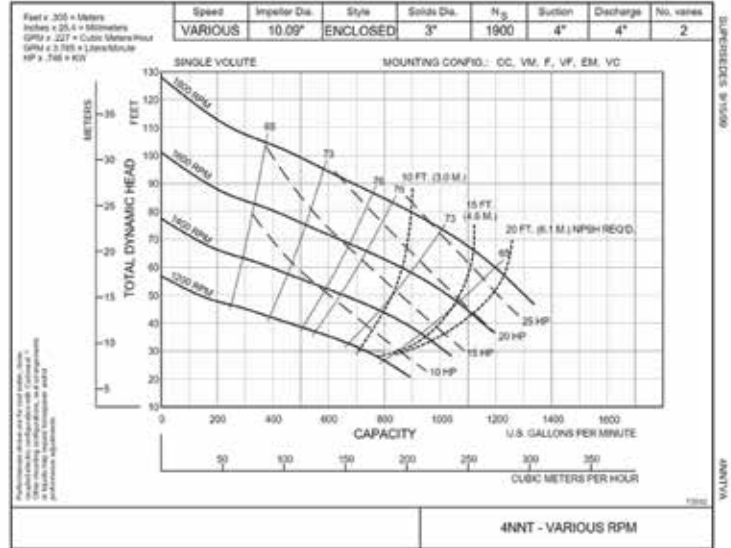
Horsepower	74 HP
Fuel Tank Capacity	96 GAL
Max Flow	2800 GPM @ 52' TDH/23 PSI
Max TDH	140' TDH/60 PSI @ 250 GPM
BEP	1900 GPM @ 85' TDH / 37 PSI



4" X 4" VAC ASSIST PUMP (4NNT)



Horsepower	49 HP
Fuel Tank Capacity	96 GAL
Max Flow	1340 GPM @ 46' TDH/20 PSI
Max TDH	120' TDH/52 PSI @100 GPM
BEP	840 GPM @ 82' TDH / 35 PSI

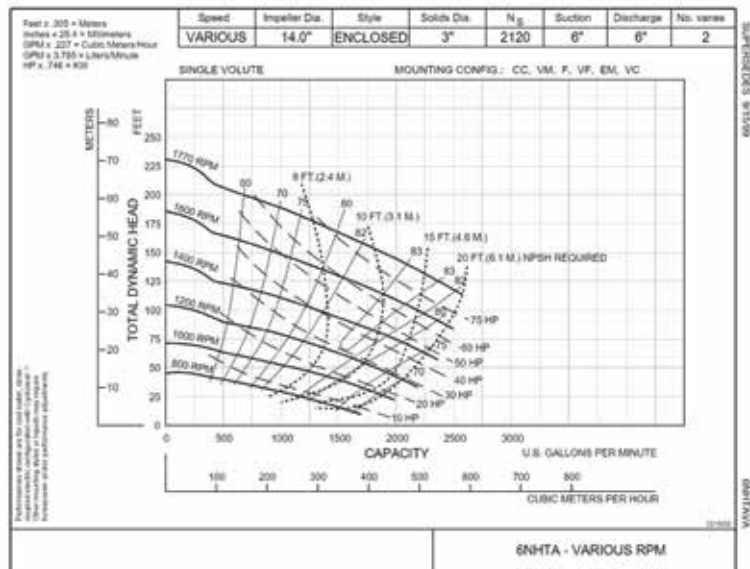


[PUMPS]

SUPER 6 PUMP (6NHTA)



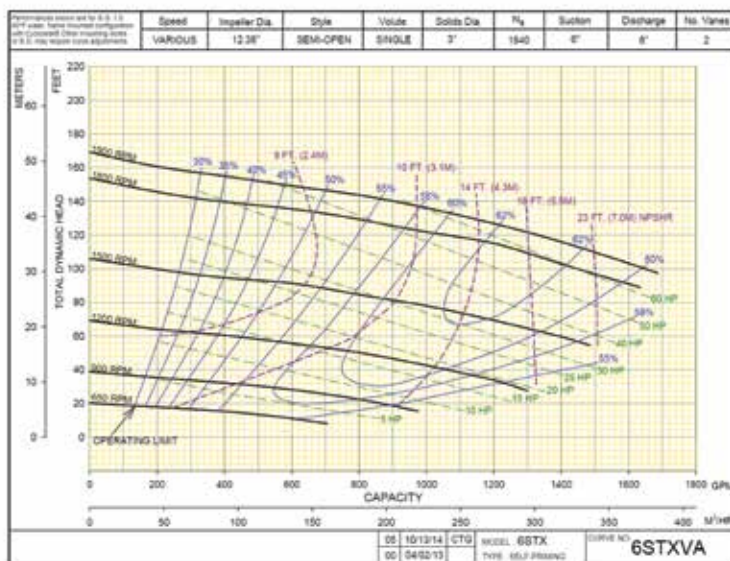
Horsepower	125 HP
Fuel Tank Capacity	96 GAL
Max Flow	2900 GPM @ 145' TDH / 63 PSI
Max TDH	285' TDH/124 PSI @ 250 GPM
BEP	2500 GPM @ 170' TDH/74 PSI



6" X 6" WET PRIME PUMPS (6STX)



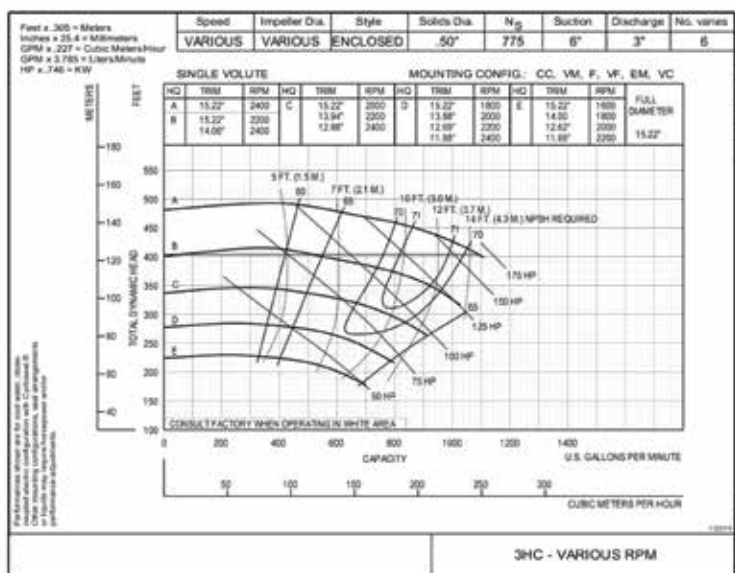
Horsepower	74 HP
Fuel Tank Capacity	96 GAL
Max Flow	1690 GPM @ 95' TDH/41 PSI
Max TDH	160' TDH/69 PSI @ 200 GPM
BEP	1350 GPM @ 120' TDH/52 PSI



6" X 3" HIGH HEAD VAC ASSIST PUMP (3HC)



Horsepower	125 HP
Fuel Tank Capacity	96 GAL on Single Axle Pkg
Max Flow	1400 GPM @ 290' TDH/125 PSI
Max TDH	400' TDH/173 PSI @ 500 GPM
BEP	875 GPM @ 360' TDH/156 PSI

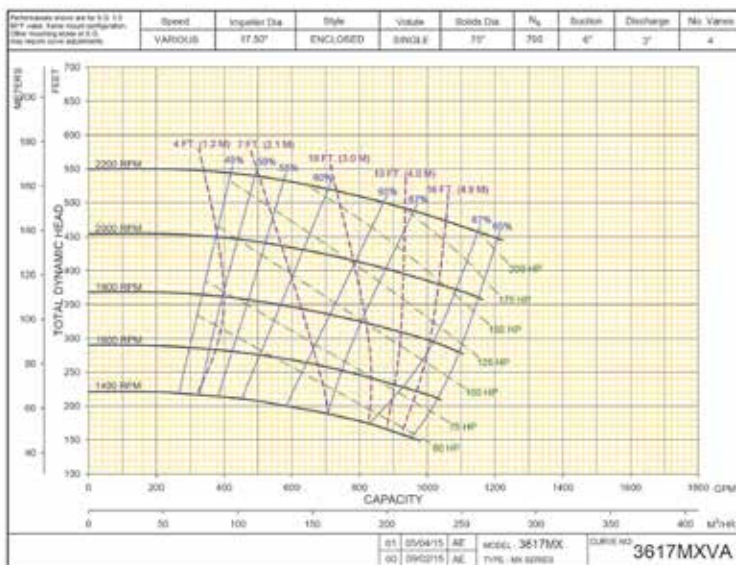


[PUMPS]

SUPER 6" X 3" VAC ASSIST PUMP (3617MX)



Horsepower	174 HP
Fuel Tank Capacity	96 GAL
Max Flow	1200 GPM @ 380' TDH / 165 PSI
Max TDH	550' TDH/238 PSI @ 100 GPM
BEP	1000 GPM @ 400' TDH/173 PSI

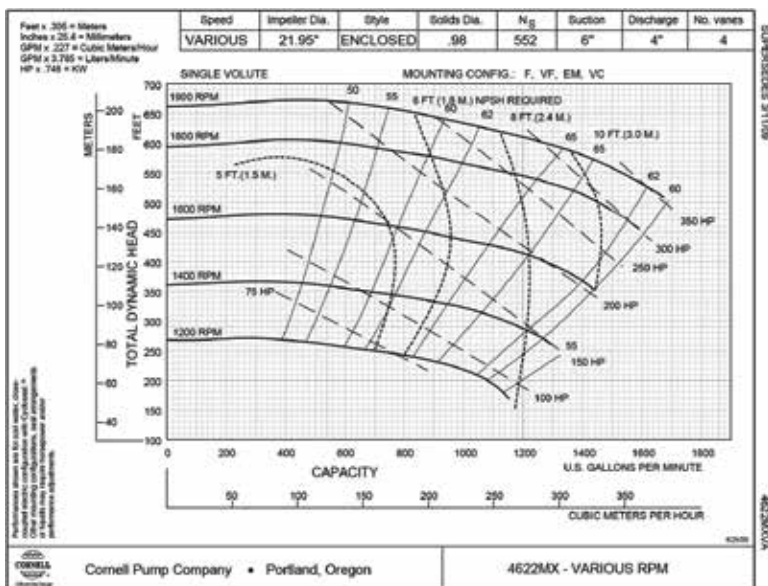


[PUMPS]

6" X 4" HIGH HEAD VAC ASSIST PUMP (4622MX)



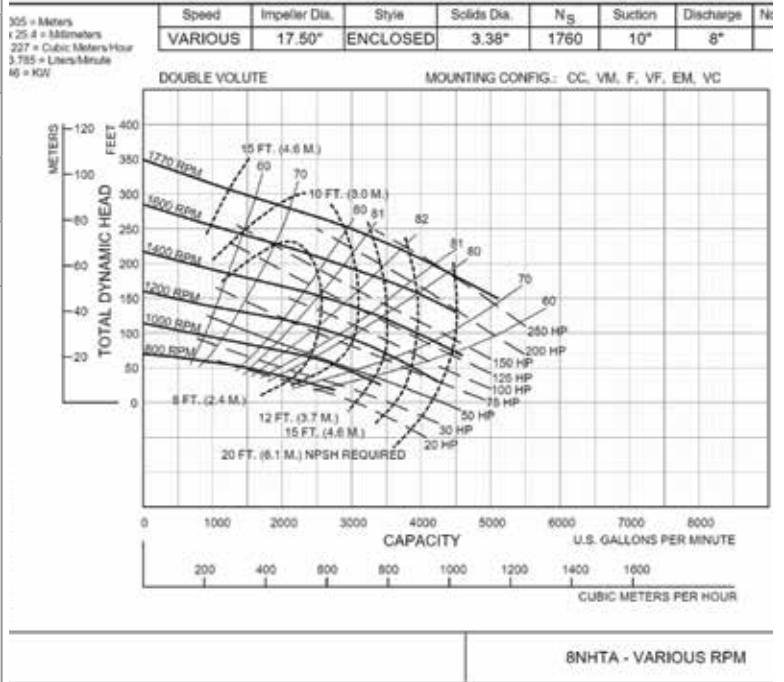
Horsepower	325 HP
Fuel Tank Capacity	250 GAL
Max Flow	1650 GPM @ 460' TDH/200 PSI
Max TDH	625' TDH/270 PSI @ 200 GPM
BEP	N/A



325 HP MEDIUM HEAD 10" X 8" (8NHTA)



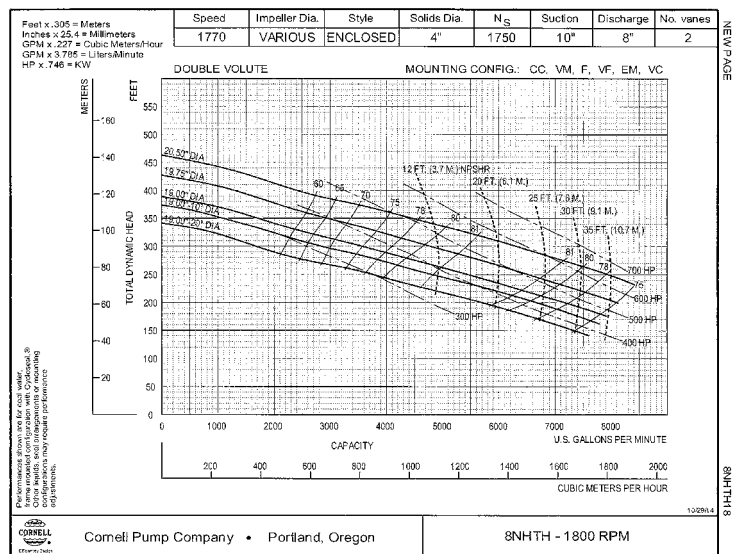
Horsepower	325 HP
Fuel Tank Capacity	160 GAL
Max Flow	5100 GPM @ 150' TDH/65 PSI
Max TDH	350' TDH/152 PSI @ 500 GPM
BEP	3900 GPM @ 240' TDH/104 PSI



600 HP HIGH HEAD 10" X 8" (8NHTH)



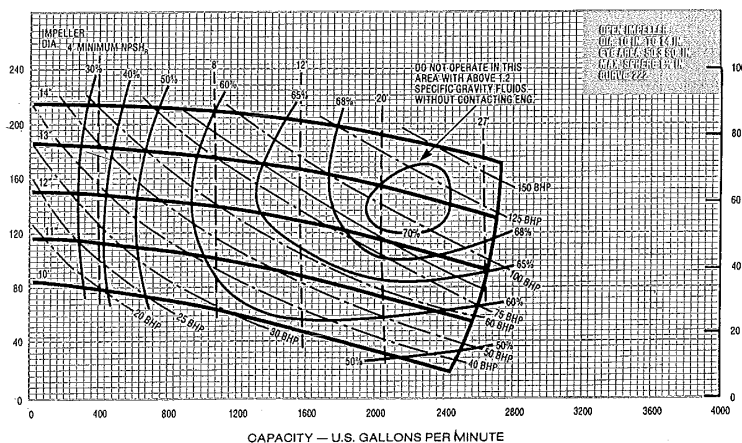
Horsepower	600 HP
Fuel Tank Capacity	180 GAL
Max Flow	8100 GPM @ 225' TDH/97 PSI
Max TDH	425' TDH/184 PSI @ 500 GPM
BEP	5700 GPM @ 325' TDH/140 PSI



8" X 6" X 14" CENTRIFUGAL DIESEL PUMP



Horsepower	174 HP
Fuel Tank Capacity	380 GAL
Max Flow	2600 GPM @ 190' TDH / 82 PSI
Max TDH	220' TDH / 95 PSI @ 200 GPM
BEP	2000 GPM @ 150' TDH / 65 PSI

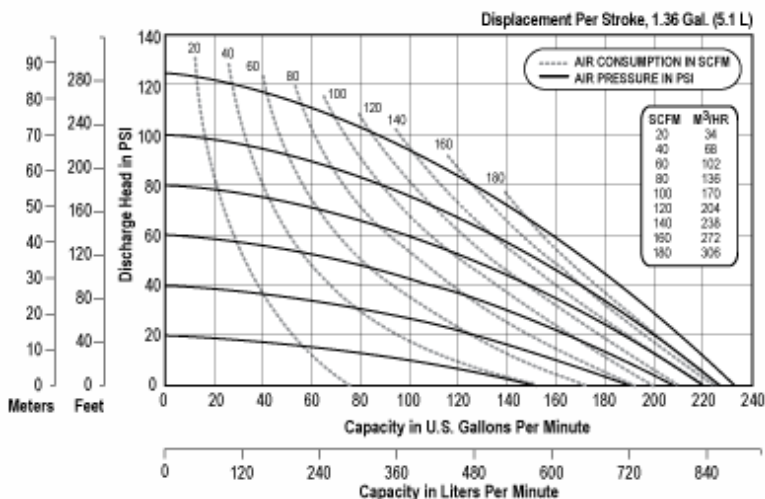


[PUMPS]

3" AIR DIAPHRAGM PUMP



Horsepower	N/A - Air
Fuel Tank Capacity	N/A
Max Flow	240 GPM @ 10 PSI
Max TDH	120 PSI @ 20 GPM
BEP	N/A







RELIABILITY

HIGHEST SERVICE STANDARDS

QUALITY, SERVICE & URGENT RESPONSE

At Tiger Industrial, we run strict quality-control programs on our generator fleet, along with, all of our equipment. We meet or exceed the highest safety standards. Tiger maintains an extensive backup fleet, from the Permian Basin in West Texas to central Louisiana, so we are ready to respond to your every need at a moment's notice.

GENERATORS

- 25 kVA Portable Generators
- 45 kVA Portable Generators
- 85 kVA Portable Generators
- 125 kVA Portable Generators
- 150 kVA Portable Generators
- 220 kVA Portable Generators
- 300 kVA Portable Generators
- 4,000 Watt & LED Portable Light Towers

GENERATORS



OPTIONAL ACCESSORIES

- 12' X 12' Containment Berm
- 50' Extension Cord
- Auxiliary Fuel Tank
- 100 AMP Distribution Box

25 KVA PORTABLE GENERATOR



L x W x H		10' x 5' x 5'	
Standby Output		22 KW	
Prime Output		20 KW	
Weight		2,200 LBS	
Fuel Cap		42 GAL	
Run Time		30 HRS	
AMP DRAW		FUEL CONSUMPTION	
1PH 120V	55 AMPS	Full Load	1.65 GPH
1PH 240V	27 AMPS	3/4 Load	1.3 GPH
3PH 240V	60 AMPS	1/2 Load	0.9 GPH
3PH 480V	30 AMPS		



45 KVA PORTABLE GENERATOR



L x W x H		12' x 6' x 8'	
Standby Output		37 KW	
Prime Output		36 KW	
Weight		2,940 LBS	
Fuel Cap		30 GAL	
Run Time		22 HRS	
AMP DRAW		FUEL CONSUMPTION	
1PH 120V	100 AMPS	Full Load	3.1 GPH
1PH 240V	50 AMPS	3/4 Load	2.2 GPH
3PH 240V	108 AMPS	1/2 Load	1.6 GPH
3PH 480V	54 AMPS		



85 KVA PORTABLE GENERATOR



L x W x H		12' x 6' x 8'	
Standby Output		70 KW	
Prime Output		66 KW	
Weight		5,000 LBS	
Fuel Cap		127 GAL	
Run Time		22 HRS	
AMP DRAW		FUEL CONSUMPTION	
1PH 120V	188 AMPS	Full Load	5.5 GPH
1PH 240V	95 AMPS	3/4 Load	3.8 GPH
3PH 240V	204 AMPS	1/2 Load	2.6 GPH
3PH 480V	102 AMPS		



[GENERATORS]

125 KVA PORTABLE GENERATOR



L x W x H		12' x 6' x 8'	
Standby Output		110 KW	
Prime Output		100 KW	
Weight		6,900 LBS	
Fuel Cap		169 GAL	
Run Time		24 HRS	
AMP DRAW		FUEL CONSUMPTION	
1PH 120V	277 AMPS	Full Load	7.3 GPH
1PH 240V	139 AMPS	3/4 Load	5.7 GPH
3PH 240V	300 AMPS	1/2 Load	4.0 GPH
3PH 480V	150 AMPS		



150 KVA PORTABLE GENERATOR



L x W x H		12' x 6' x 8'	
Standby Output		132 KW	
Prime Output		120 KW	
Weight		9,278 LBS	
Fuel Cap		214 GAL	
Run Time		25 HRS	
AMP DRAW		FUEL CONSUMPTION	
1PH 120V	333 AMPS	Full Load	8.4 GPH
1PH 240V	166 AMPS	3/4 Load	6.5 GPH
3PH 240V	361 AMPS	1/2 Load	4.9 GPH
3PH 480V	180 AMPS		



220 KVA PORTABLE GENERATOR



L x W x H		16' x 6' x 8'	
Standby Output		194 KW	
Prime Output		176 KW	
Weight		6,900 LBS	
Fuel Cap		214 GAL	
Run Time		21 HRS	
AMP DRAW		FUEL CONSUMPTION	
1PH 120V	488 AMPS	Full Load	13.6 GPH
1PH 240V	244 AMPS	3/4 Load	10.4 GPH
3PH 240V	529 AMPS	1/2 Load	7.7 GPH
3PH 480V	264 AMPS		



300 KVA PORTABLE GENERATOR



L x W x H	16' x 6' x 11'		
Standby Output	264 KW		
Prime Output	240 KW		
Weight	13,000 LBS		
Fuel Cap	300 GAL		
Run Time	21 HRS		
AMP DRAW		FUEL CONSUMPTION	
1PH 120V	667 AMPS	Full Load	15 GPH
1PH 240V	333 AMPS	3/4 Load	14 GPH
3PH 240V	722 AMPS	1/2 Load	11 GPH
3PH 480V	361 AMPS		



GENERATOR WITH WATER TANK COMBO UNIT



25 KVA PORTABLE GENERATOR			
L x W x H	10' x 5' x 5'		
Standby Output	22 KW		
Prime Output	20 KW		
Weight	2,200 LBS		
Fuel Cap	42 GAL		
Run Time	30 HRS		
AMP DRAW		FUEL CONSUMPTION	
1PH 120V	55 AMPS	Full Load	1.65 GPH
1PH 240V	27 AMPS	3/4 Load	1.3 GPH
3PH 240V	60 AMPS	1/2 Load	0.9 GPH
3PH 480V	30 AMPS		
500 GALLON WATER TRAILER			
L x W x H	19' x 8' x 6'		
Weight	3,000 LBS		
GPM	198		
OPTIONAL ACCESSORIES			
<ul style="list-style-type: none"> • 2" x 50' Dis. Hose • 55 Gallon Drum Tiger Soap • Capacity - 500 GAL • 12 X 12 Containment Berm • 50' Ext. Cord • Aux. Fuel Tank • Dist. Box 100 AMP 			



[GENERATORS]



TRUCK INDUSTRIAL
888-886-0047

N07-2694

LP106585

LED PORTABLE LIGHT TOWER

L x W x H	716" x 98" x 348"
Weight	1,720 LBS
Fuel Cap	30 GAL
Run Time	50 HR
Lumens	542,000
Stabilizer	Four-Point Outrigger System

- SHO-HD® Lamp Fixture – 4 Metal Halide Lamps Only
- SLS™ Sequenced Light System™
- Gull-Wing Style Doors – Reaction injection molded doors providing strength and corrosion resistance
- Forklift Pockets and Lifting Eye
- 30 Gallon Polyethylene Fuel Tank
- Four-Point Outrigger System
- GPS Ready
- 59° Fixture Rotation
- 55 MPH Operating Wind Speed Rating



4,000 WATT PORTABLE LIGHT TOWER

L x W x H	173" x 50" x 70"
Max Height	32'
Weight	1,644 LBS
Fuel Cap	30 GAL
Run Time	48 HR
Lumens	440,000
Ball Hitch	2"
Light Coverage	5-7 ACRES
Sound Level	66 DB



DEPENDABLE



GETTING IT DONE RIGHT

HIGHEST QUALITY & PERFORMANCE

When it comes to washers & cleaners, Tiger Industrial keeps a large diverse fleet of pressure washers, steam cleaners and hydroblasters prepped for immediate deployment.

Our team of experts will help you select the right type of equipment for the job. Additionally, we can readily verify which pieces of equipment you are currently renting, to help you better plan for upcoming projects.

PRESSURE WASHERS AND HYDROBLASTERS

- 3,500 to 40,000 psi
- Air-operated screen cleaners
- Hot water / steam up to 5,000 psi
- Diesel and electric
- Explosion-proof
- Steam generators for de-icing and de-gassing

PRESSURE WASHERS



TRAILER MOUNT HOT WATER PRESSURE WASHER OPTIONAL ACCESSORIES

- Turbo Nozzle
- 3/8" x 50' Pressure Hose
- Foot Pedal
- Flex Lance
- Double Trigger Gun
- Extension Wand
- 30" Hydro Mower

4K PSI TRAILER MOUNT HOT WATER PRESSURE WASHER



Skid Mount L x W x H	54" x 48" x 50"
Trailer Mount LxWxH	19' x 8' x 6'
Weight	6,500 LBS
Fuel Capacity	18 GAL
Water Capacity	325 GAL
Run Time	4 HRS
Temperature	160° Fahrenheit
Trailer Ball	2" OR 2 5/16"
GPM	6 GPM
Engine	25 HP Kubota Diesel



4K PSI TRAILER MNT HOT WATER PRESSURE WASHER 2-SKID (DBL TROUBLE)



Skid Mount L x W x H	54" x 48" x 50"
Trailer Mnt L x W x H	19' x 8' x 6'
Weight	8,000 LBS
Fuel Capacity	36 GAL
Water Capacity	325 GAL
Run Time	4 HRS
Temperature	160° Fahrenheit
Trailer Ball	2" OR 2 5/16"
GPM	6 GPM
Engine	25 HP Kubota Diesel



[PRESSURE WASHERS]



AIR OPERATED SCREEN CLEANER



L x W x H	22" x 16" x 19"
Flow Rate	2.2 GPM
Max Pressure	1,200 PSI
Air Inlet	3/4 Crowfoot
Air Req.	90 PSI @ 80 CFM
Diesel	Yes
Pressure Hose	50'



ELECTRIC SCREEN CLEANER



L x W x H	18" x 32" x 32"
Weight	125 LBS
Flow Rate	3.3 GPM
Max Pressure	800 PSI
Motor	2 HP 480V / 60 HZ
Diesel	Yes



3,000 PSI ELECTRIC EXPLOSION PROOF HOT WATER WASHER



L x W x H	39" x 57" x 50"
Weight	1,557 LBS
Motor	480V 3PH 96 AMPS or 480V 60 AMPS
Pressure Hose	3/8" x 50'

OPTIONAL ACCESSORIES

- Turbo Nozzle
- Foot Pedal
- Flex Lance
- Double Trigger Gun with Extension Wand



ELECTRIC VAC UNITS



30 HP TIGER ELECTRIC VAC



L x W x H	10' x 5.5' x 7.5'
Weight	5,000 LBS
Tank Capacity	25 BBL
Horsepower	30 HP
Voltage	480V 3PH
Motor	30 JH Texp 1800 RPM 480V 60 HZ
Drive	Timing Belt Style Positive Drive 1.5:1 Ratio
Blower	Jurop RV 520 CFM
CFM	18 HG 15 PSI
Max Vacuum	20" of Mercury
Max Discharge Pressure	15 PSI
Classification	Class 1 Div 1 Group C&D
Voltage / Frequency	480V / 60 HZ
Full Load Amps	39 AMPS
Breaker	Requires 100 AMPS to Operate
Suction Conveyance	25+ Tons / HR
Discharge Conveyance	200 GPM



50 HP TIGER ELECTRIC VAC



L x W x H	13.5' x 6.5' x 8.9'
Weight	8,000 LBS
Tank Capacity	30 BBL
Horsepower	50 HP
Voltage	480V 3PH
Motor	50 HP Texp 1800 RPM 480V 60 HZ
Drive	Timing Belt Style Positive Drive 1.5:1 Ratio
Blower	Jurop RV 520 CFM 21HG 15 PSI
Max Vacuum	20" of Mercury
Max Pressure	18 PSI
Max Discharge Pressure	15 PSIG
Pump	1,100 RPM
Classification	Class 1 Div 1 Group C&D
Voltage / Frequency	480V / 60 HZ
Full Load Amps	65 AMPS
Breaker	Requires 100 AMPS to Operate
Suction Conveyance	30 Tons / HR
Discharge Conveyance	250 GPM



[ELECTRIC VAC UNITS]

AVAILABLE

TYPES OF BUILDINGS

STANDARD

PRODUCT LINES:

6.3 PSI, 8 PSI & 10 PSI

12' x 40'

8' x 40'

8' x 20'

Tiger will customize the interior of any building to provide the specific layout(s) that your company needs, including:

- Duplex
- Triplex
- Cool Down Buildings
- Bathroom Units
- Men's Multi-Bathroom
- Women's Multi-Bathroom
- Single Bathroom
- Shower Trailers
- Locker Rooms
- Bathroom & Kitchenettes
- Decon Units
- Tool Rooms
- Office Units
- Guard Shacks
- Secure Storage Areas
- Bunkhouses
- Safety Compound
- Living Quarters
- Laundry Units
- Medical Facilities
- Pharmacies
- Outage Housing
- Hurricane Shelters



THE TIGER ADVANTAGE

SAFETY, QUALITY, DELIVERY & SERVICE

SAFETY:

- Designed for occupant safety
- Designed to VCE duration requirements
- Design review performed by Qualified Blast Design Engineers

QUALITY:

- Documented welding procedures
- Material traceability
- 3rd party QC inspection reports

DELIVERY:

- Manufacturing capacity to meet large project schedules
- Rapid deployment
- International logistics experience
- Able to deliver all building sizes with either flatbed or rollback

SERVICE:

- 24-hour "on call" customer service
- Staff service technicians
- Service centers

8' X 40' SAFETY COOL DOWN BUILDING



8' X 40' SAFETY COOL DOWN BUILDING



SIZE	PSI RATING	DURATION	RESPONSE LEVEL
8'x40'	6.3 PSI	800 MS	MEDIUM
8'x40'	8.0 PSI	42.5 MS	MEDIUM
Weight	22000 LBS		
Lifting Lugs	(4)		
HVAC	18,000 Btu Units, Non-Classified Electrical Insulated		
Electrical	(1) 240V, 100 A, Single Phase, Non-Classified Electrical		
Doors	(2) Blast Rated Doors		
Windows *	(2) Blast Rated Windows		
Fire Protection	(2) Smoke Detectors & (1) Fire Extinguisher		
Lights	(2) Emergency Exit Lights (6) 4' Long Dual Bulb Fluorescent Lights		
Outlets	(6) Duplex Electrical Outlets		
Ports	(3) Data Ports & (3) Phone Ports		
Walls	Painted Interior Wall Covering - 3/4" Industrial Grade Plywood		
Floors *	Heavy Industrial Rubberized Tile Floors		
Paint	Exterior Paint - Direct To Metal, Rust Inhibiting, High Solids Urethane (Steel Grit Blast Prep)		



OPTIONAL UPGRADES

- Tool/Material Racks And Cabinets
- Wireless/Radio Signal Amplifier

* UPGRADE INCLUDED



[8' X 40' SAFETY COOL DOWN BUILDING]



FLEXIBILITY

MAKE IT HAPPEN

EXCEEDING EXPECTATIONS

What will it take to get the job done right? That is the question we ask ourselves at Tiger when executing a job. Our main goal is to exceed our customers expectations with a “get it done” perseverance. We strive to improve our customer relations with reliability. When “the other guys” can’t deliver, we will do whatever it takes to meet or exceed your expectations.

MISCELLANEOUS EQUIPMENT RENTALS

- Pipe Racks
- Mud Bucket
- 528 Gallon Double Wall Fuel Pod

PIPE RACKS



OPTIONAL ACCESSORIES

- Solid Welded End Caps
- Five (5) Sets of Legs
- 4" Heavy Duty Pipe Construction
- Pipe Racks come in a Standard 28' Length by 42" Height



MUD BUCKET



- All Aluminum Construction
- On-board Lubrication System
- Easily Replaceable Plumbing
- Low Maintenance
- Durable



528 GALLON DOUBLE WALL FUEL POD



L x W x H	87" x 46" x 52"
Containment	110% Secondary Containment
Capacity	1,825 LBS Empty/5,574 LBS Full

- Internal Baffles
- Secure Hose Access
- Full Load Lifting Eyes
- Tie Down Points
- Direct to Machinery Fuel Ports

OPTIONAL ACCESSORIES

- 16' Tandem Trailer
- 110V Fuel Pump
- Fuel Pump - 12V Fuel Pump & Solar Panel



12' ROAD CROSSING MANIFOLD

L x W x H	12' x 48" x 6"
Inlet/Outlet	12" or 8" 150# Flange
Max Pressure	75 PSI

24' ROAD CROSSING MANIFOLD

L x W x H	24' x 48" x 6"
Inlet/Outlet	12" or 8" 150# Flange
Max Pressure	75 PSI



CONTAINMENT BERM

L x W x H	6' x 6' x 12"
L x W x H	12' x 12' x 12"
L x W x H	25' x 12' x 12"
L x W x H	50' x 12' x 12"

OPTIONAL ACCESSORIES

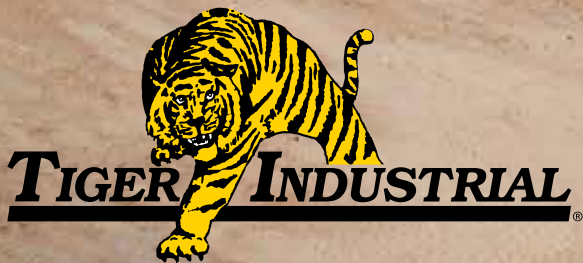
- Pressure Washer
- Felt Pad
- Duck Bill Vac Attachment



[MISCELLANEOUS]







RESPONSIVE. AVAILABLE. RELIABLE.





TIGER INDUSTRIAL LOCATIONS

Beaumont, Texas

1313 Gulf Street
Beaumont, TX 77701

Victoria, Texas

11901 US Highway 59,
N. Victoria, TX 77905

Dilley, Texas

13400 S. Interstate 35
Dilley, TX 78017

Houston, Texas

7000 Decker Dr.
Baytown, TX 77520

Corpus Christi, Texas

8283 Leopard St.
Corpus Christi TX 78409

Midland, Texas

13014 West County Road
100, Midland, TX 79765

24/7 Dispatch: 888-866-0047 / 409-832-9336 / TigerIndustrialRentals.com



Scan to view Tiger's
capabilities video >

