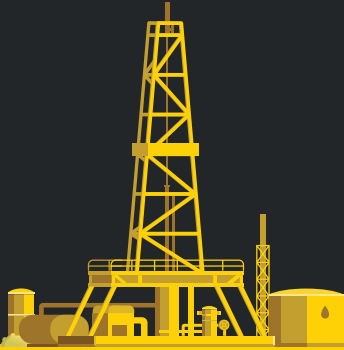




# EQUIPMENT CATALOG

UPSTREAM



MIDSTREAM



DOWNSTREAM






# MATS

Tiger has the matting solutions to make your project a success. Each mat has distinct individual advantages to fit your specific needs. Our combined fleet of mats encompasses solutions for integrity, pipeline, access roads, tank farms, refineries, high lines, train derailments, commercial construction, frac sand, completions sites, and many others.

At Tiger, we have an agnostic approach to mat rentals. We believe in all of them and have a mat for every application. Our highly skilled team can offer assistance in selecting the right mat for the right job, but if you have a preference for a specific mat, tell us what you want and we will get it to you - ASAP.



	ECOMATS™	TIGER POLY MATS	TIGER TIMBER MATS
ADVANTAGES	<ul style="list-style-type: none"> <li>• Maximum Durability</li> <li>• Extreme Life</li> <li>• Very Contractor Friendly</li> <li>• Fast &amp; Easy to Lay</li> <li>• Traceable with RFID Chip</li> <li>• High PSI</li> <li>• No Nails &amp; No Cable Loops</li> <li>• No Pinning Required</li> <li>• Flame Spread Rated</li> <li>• No Absorption and Won't Float</li> <li>• Repairable</li> </ul>	<ul style="list-style-type: none"> <li>• Long Life</li> <li>• No Nails</li> <li>• No Gaps</li> <li>• No Absorption</li> <li>• High PSI</li> <li>• Great when Combined with Good Sub Base</li> <li>• Ships in Containers</li> <li>• Great for a Sand Surface</li> </ul>	<ul style="list-style-type: none"> <li>• Excellent replacement for 3-ply wood laminate mats</li> <li>• No rot, no gaps, and no nails</li> <li>• Very uniform surface</li> <li>• Safer</li> <li>• Easy handling</li> <li>• Flexible and conforms to ground conditions</li> <li>• Resilient to absorbing liquids</li> <li>• Traction control</li> <li>• Environmentally friendly</li> <li>• 1 mat is made from approximately 165 recycled rubber tires</li> </ul>
SIZE	8' x 16'	6.5' x 13'4"	7.5' x 14'
SQ FT	128 sq ft	86 sq ft	105 sq ft
WEIGHT	3,000 lbs	1,095 lbs	3,000 lbs
MATS/TRUCK	14-15	40	14-15
CONNECTING	Directly	8 Pin	N/A
PSI	3,910	600	N/A
LINEAR FT/TRUCK	112	260	56
CONSTRUCTION	HDPE+	HDPE+	Mixed Hardwood
THICKNESS	4"	4"	8"



# PUMPS



## TIGER DELIVERS OUR READY LINE IS UP AND READY

We keep a large fleet of pumps prepped for immediate deployment. Every piece of equipment we offer is put through a rigorous maintenance regimen to ensure the highest quality and performance.

Our knowledgeable personnel will help you select the right pump for the job, and we're available around the clock to offer any support you may need.

### PUMPS:

- Centrifugal
- Trash
- Water Transfer
- Vac Assist
- Air-Operated
- Diesel & Electric

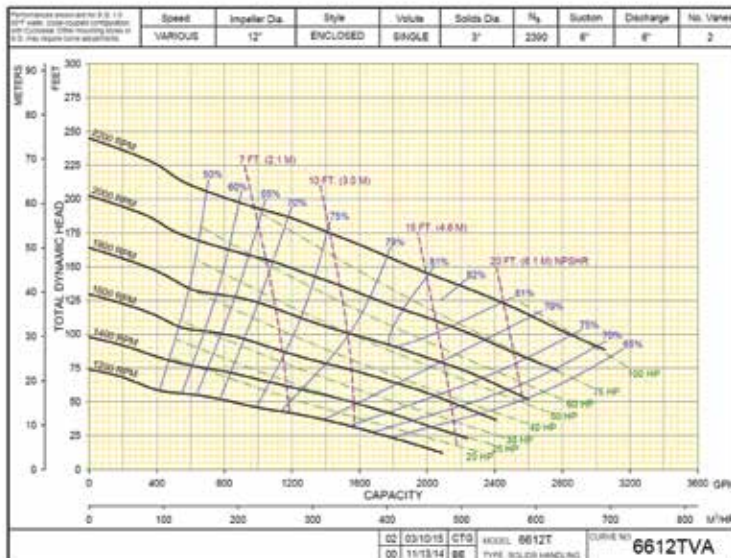
# PUMPS



## 6" X 6" VAC ASSIST PUMP (6612T)



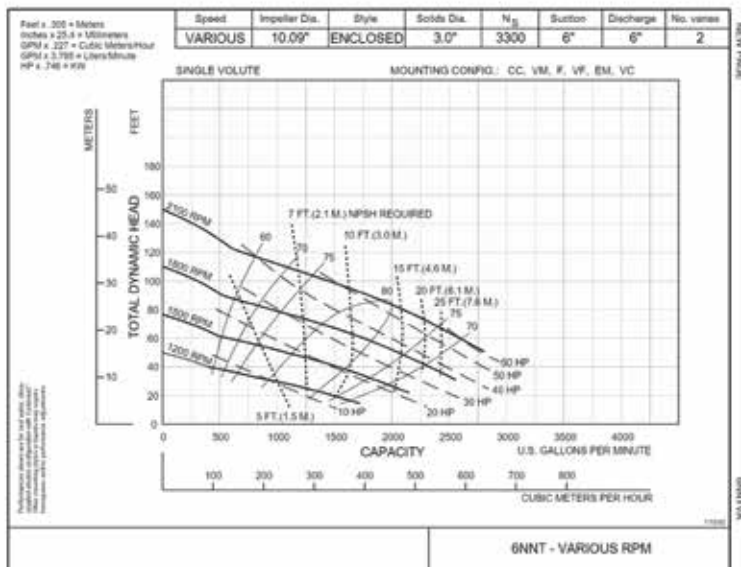
Horsepower	74 HP
Fuel Tank Capacity	96 GAL
Max Flow	2750 GPM @ 75' TDH / 33 PSI
Max TDH	190' TDH/82 PSI @ 1000 GPM
BEP	2100 GPM @ 115' TDH/50 PSI



## 6" X 6" VAC ASSIST PUMP (6NNT)



Horsepower	74 HP
Fuel Tank Capacity	96 GAL
Max Flow	2800 GPM @ 52' TDH/23 PSI
Max TDH	140' TDH/60 PSI @ 250 GPM
BEP	1900 GPM @ 85' TDH / 37 PSI



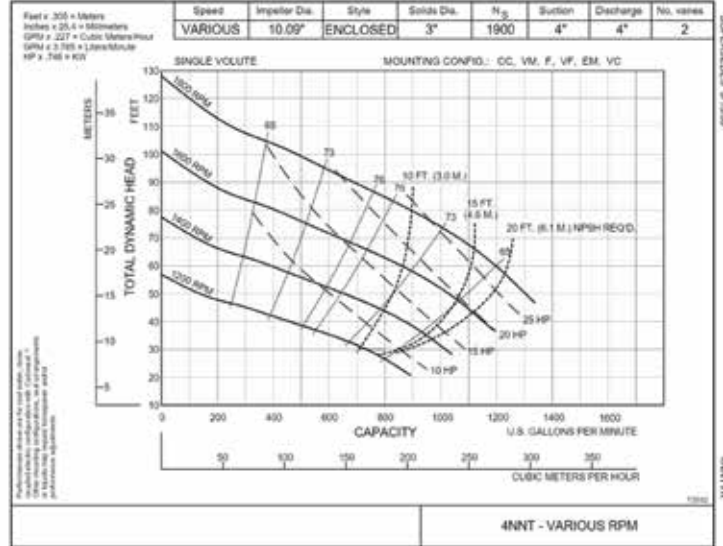


# PUMPS

## 4" X 4" VAC ASSIST PUMP (4NNT)



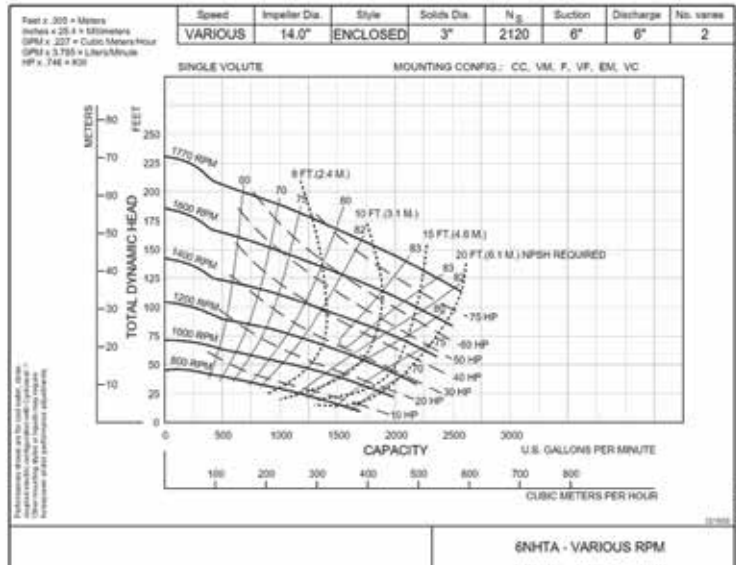
<b>Horsepower</b>	49 HP
<b>Fuel Tank Capacity</b>	96 GAL
<b>Max Flow</b>	1340 GPM @ 46' TDH/20 PSI
<b>Max TDH</b>	120' TDH/52 PSI @100 GPM
<b>BEP</b>	840 GPM @ 82' TDH / 35 PSI



## SUPER 6 PUMP (6NHTA)



<b>Horsepower</b>	125 HP
<b>Fuel Tank Capacity</b>	96 GAL
<b>Max Flow</b>	2900 GPM @ 145' TDH / 63 PSI
<b>Max TDH</b>	285' TDH/124 PSI @ 250 GPM
<b>BEP</b>	2500 GPM @ 170' TDH/74 PSI



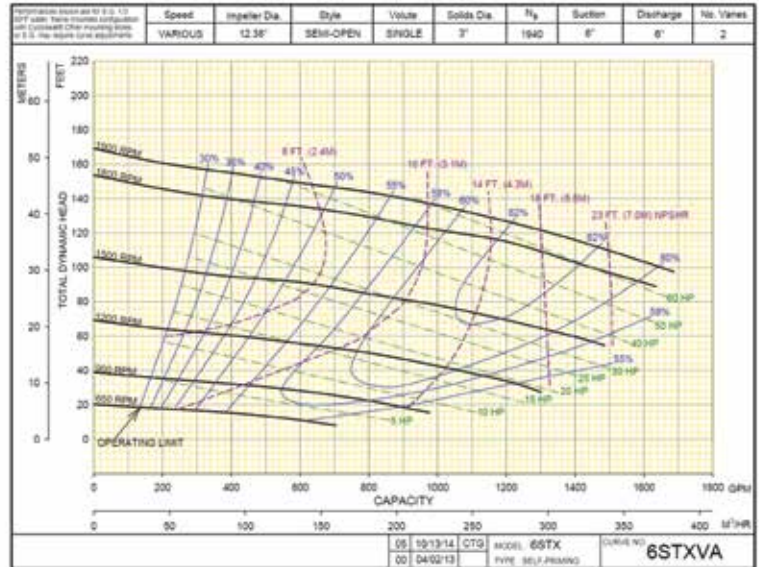
# PUMPS



## 6" X 6" WET PRIME TRASH PUMPS (6STX)



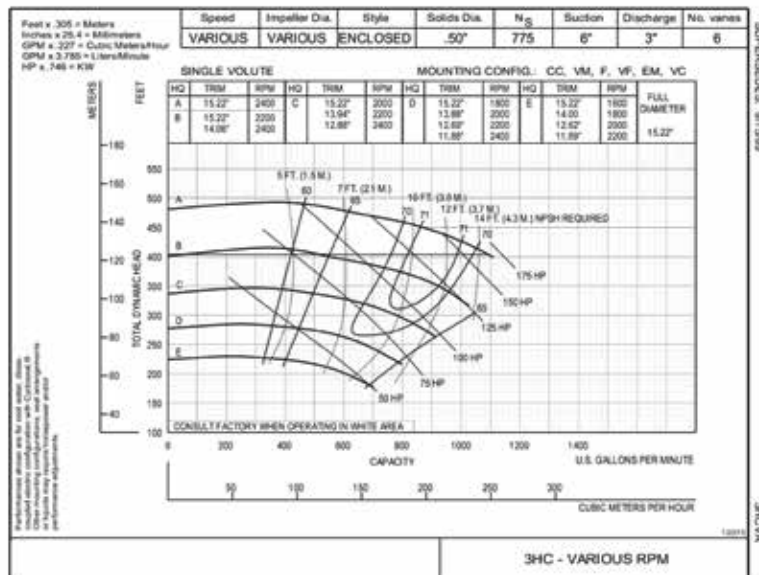
Horsepower	74 HP
Fuel Tank Capacity	96 GAL
Max Flow	1690 GPM @ 95' TDH/41 PSI
Max TDH	160' TDH/69 PSI @ 200 GPM
BEP	1350 GPM @ 120' TDH/52 PSI



## 6" X 3" HIGH HEAD VAC ASSIST PUMP (3HC)



Horsepower	125 HP
Fuel Tank Capacity	96 GAL on Single Axle Pkg
Max Flow	1400 GPM @ 290' TDH/125 PSI
Max TDH	400' TDH/173 PSI @ 500 GPM
BEP	875 GPM @ 360' TDH/156 PSI



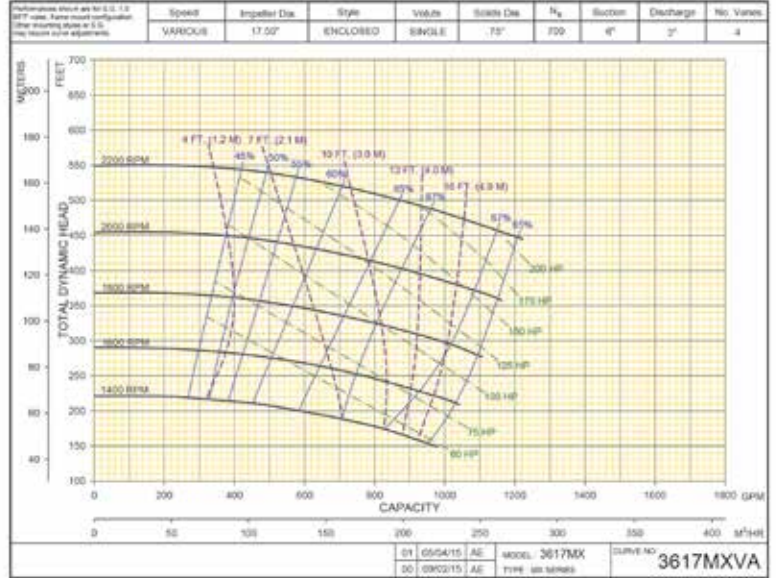


# PUMPS

## SUPER 6" X 3" VAC ASSIST PUMP (3617MX)



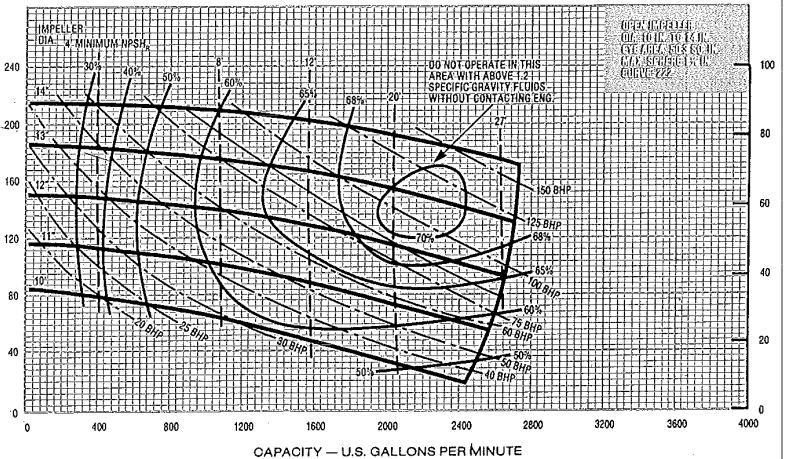
Horsepower	174 HP
Fuel Tank Capacity	96 GAL
Max Flow	1200 GPM @ 380' TDH / 165 PSI
Max TDH	550' TDH/238 PSI @ 100 GPM
BEP	1000 GPM @ 400' TDH/173 PSI



## 8" X 6" X 14" CENTRIFUGAL DIESEL PUMP



Horsepower	174 HP
Fuel Tank Capacity	380 GAL
Max Flow	2600 GPM @ 190' TDH / 82 PSI
Max TDH	220' TDH / 95 PSI @ 200 GPM
BEP	2000 GPM @ 150' TDH / 65 PSI



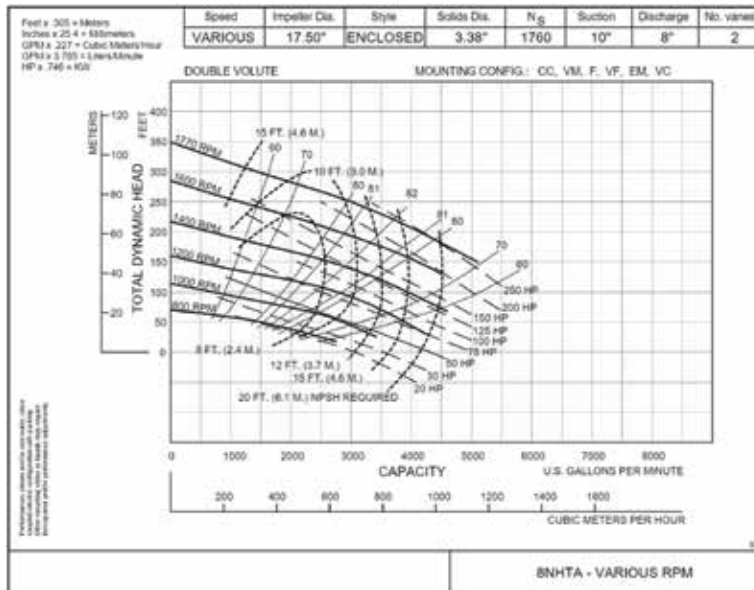
# PUMPS



## 325 HP MEDIUM HEAD 10" X 8" PUMP (8NHTA)



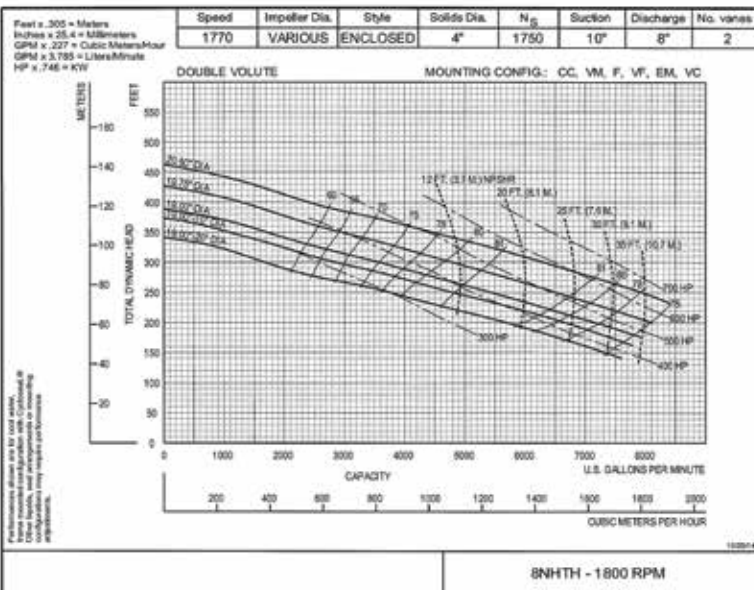
Horsepower	325 HP
Fuel Tank Capacity	160 GAL
Max Flow	5100 GPM @ 150' TDH/65 PSI
Max TDH	350' TDH/152 PSI @ 500 GPM
BEP	3900 GPM @ 240' TDH/104 PSI



## 600 HP HIGH HEAD 10" X 8" PUMP (8NHTH)



Horsepower	600 HP
Fuel Tank Capacity	180 GAL
Max Flow	8100 GPM @ 225' TDH/97 PSI
Max TDH	425' TDH/184 PSI @ 500 GPM
BEP	5700 GPM @ 325' TDH/140 PSI



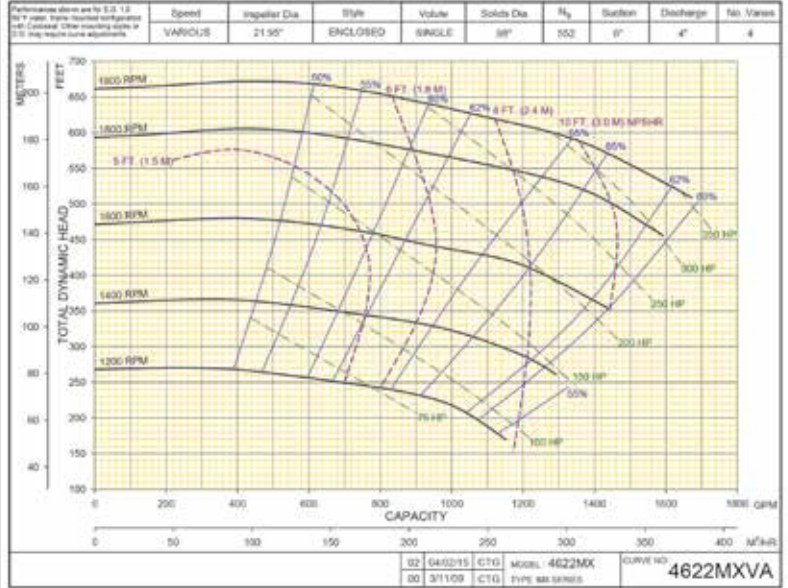


# PUMPS

## 6" X 4" HIGH HEAD VAC ASSIST PUMP (4622MX)



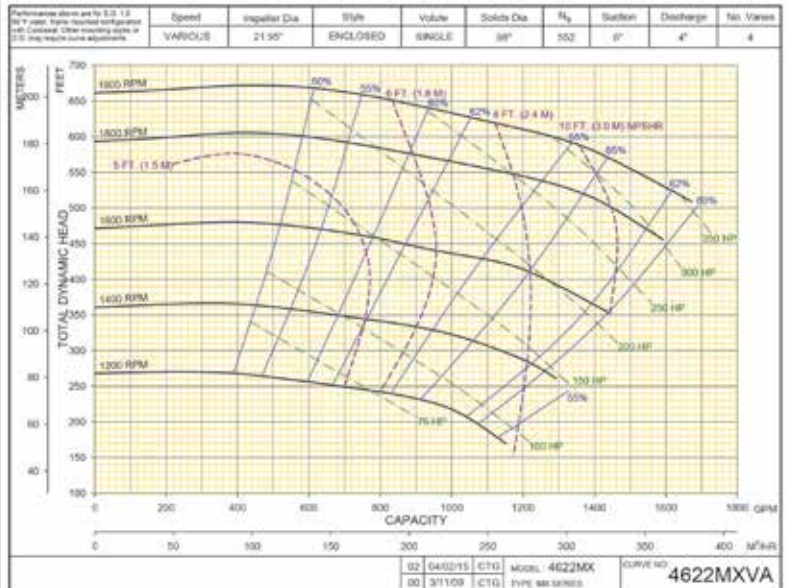
<b>Horsepower</b>	325 HP
<b>Fuel Tank Capacity</b>	250 GAL
<b>Max Flow</b>	1650 GPM @ 460' TDH / 200 PSI
<b>Max TDH</b>	625' TDH/270 PSI @ 200 GPM
<b>BEP</b>	N/A



## 6" X 4" HIGH HEAD VAC ASSIST PUMP (6822MX)



<b>Horsepower</b>	325 HP
<b>Fuel Tank Capacity</b>	250 GAL
<b>Max Flow</b>	1650 GPM @ 460' TDH / 200 PSI
<b>Max TDH</b>	625' TDH/270 PSI @ 200 GPM
<b>BEP</b>	N/A

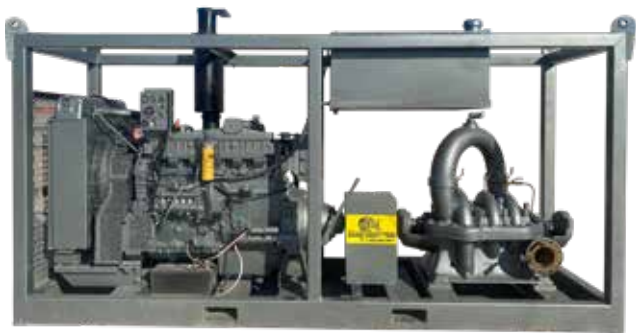


# PUMPS

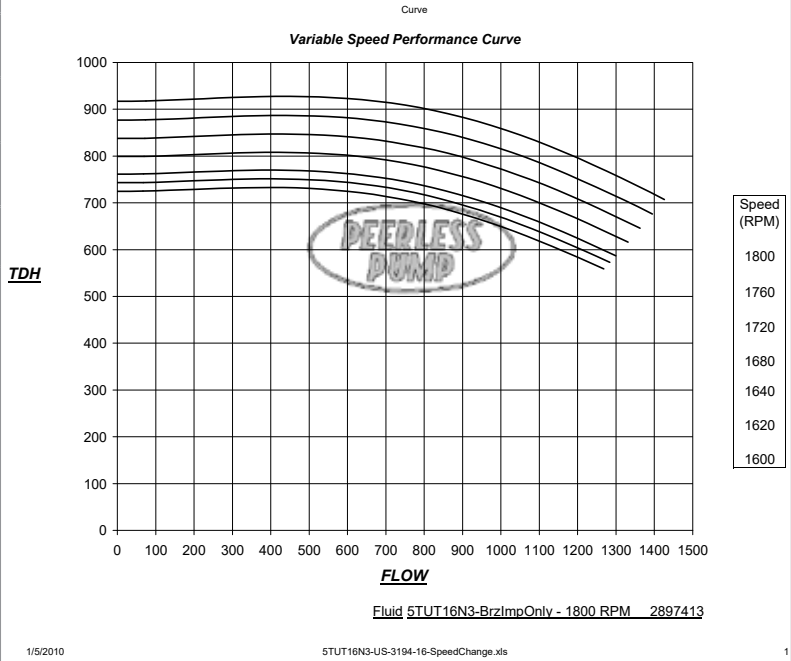


## 5TUT-16 THREE FILL STAGE PUMP

Horsepower	425 HP
Fuel Tank Capacity	185 Gallons
Max Flow	1,400 GPM @ 720' TDH/311 PSI
Max TDH	924' TDH/400 PSI @ 500 GPM
BEP	1,200 GPM @ 800' TDH/346 PSI

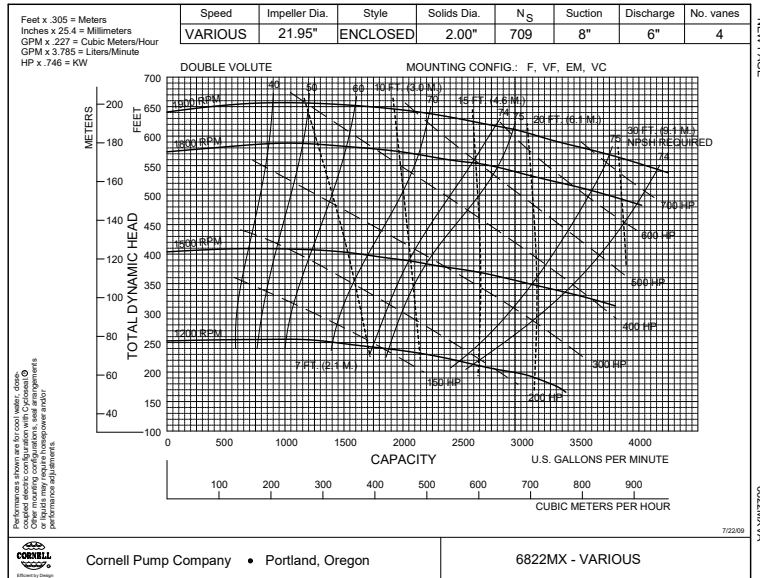


\* Can Achieve Higher Flows and Pressure with Low Head Pump in Series



## 600 HP HIGH HEAD 8" X 6" PUMP (6822MX)

Horsepower	600 HP
Fuel Tank Capacity	180 GAL
Max Flow	2,800 GPM @ 630' TDH/272 PSI
Max TDH	658' TDH/285 PSI @ 1,000 GPM
BEP	2,900 GPM @ 600' TDH/260 PSI





# PUMPS

## TP50-3000 HYDROSTATIC TEST PUMP



<b>Horsepower</b>	125 HP
<b>Fuel Tank Capacity</b>	30 GAL
<b>Max Flow</b>	47 GPM
<b>Max Pressure</b>	3000 PSI
<b>L x W x H</b>	18' x 8' x 9'
<b>Weight</b>	6,750 LBS



The TP50-3000 pump is unitized with a 4045 John Deere engine, 5 speed manual transmission, Giant Model GP7145 Triplex Pump

- 1.75" Plunger, 2.05" Stroke
- 063 Gallons Per Stroke
- 2 – 47 Gallons Per Minute
- Fluid End Working Pressure 3,000 PSI Max
- Trailer Mounted with 500 Gallon Water Tank
- 2" Suction; 1" Discharge Connections
- Available with Optional Stroke Counter

Trans Gear	Gear Ratio	Engine RPM	Trans Output RPM	Drive Belt Ratio	Pump Speed	GPS	GPM
5	1	2400	2400.00	3.24	740.74	0.063	46.67
5	1	850	850.00	3.24	262.35	0.063	16.53
4	1.48	2400	1621.62	3.24	500.50	0.063	31.53
4	1.48	850	574.32	3.24	177.26	0.063	11.17
3	2.45	2400	979.59	3.24	302.34	0.063	19.05
3	2.45	850	346.94	3.24	107.08	0.063	6.75
2	4.35	2400	551.72	3.24	170.29	0.063	10.73
2	4.35	850	195.40	3.24	60.31	0.063	3.80
1	8.05	2400	298.14	3.24	92.02	0.063	5.80
1	8.05	850	105.59	3.24	32.59	0.063	2.05

## W-440 HYDROSTATIC TEST PUMP



<b>Horsepower</b>	440 HP
<b>Fuel Tank Capacity</b>	100 GAL
<b>Max Flow</b>	397 GPM
<b>Max Pressures</b>	Varies depending on liners

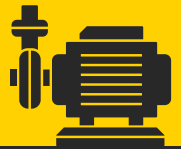


The W-440 pump is unitized with a series 60, Tier 3 Detroit engine, 10 speed manual transmission, max flow 392 gpm with 4.5" piston.

- Pump Speed Rating - 320 Max
- Available with Piston Sizes 3", 4" and 4.5"
- Fluid End Working Pressure Rating add 5,000 psi Max
- Discharge Connection Size - 6"
- Accessory Connection Size - 2" NPT or 2" Union
- Valve Size - API #4
- Piston Rod End - API #SA-4
- Crankcase Oil Capacity - 35 gallon
- Liner Wash Capacity - 24 gallon
- Internal Gear Ratio - 4.58:1
- Length/Width/Height 20' x 3.3' x 8'
- Height - 7.8' at the Tallest Part
- 10 Speed Manual Transmission

Liner Size	GPM	GPS	Max PSI
3" Piston	14-175 GPM	.552 gps	5000 psi
4" piston	25-310 GPM	.978 gps	3100 psi
4.5" piston	32-392 GPM	1.239 GPS	2400 psi

# PUMPS



## W-440 TRIPLEX PUMP



Horsepower	440 HP
Fuel Tank Capacity	100 GAL
Max Flow	397 GPM
Max TDH	Varies depending on liners
BEP	Varies depending on liners

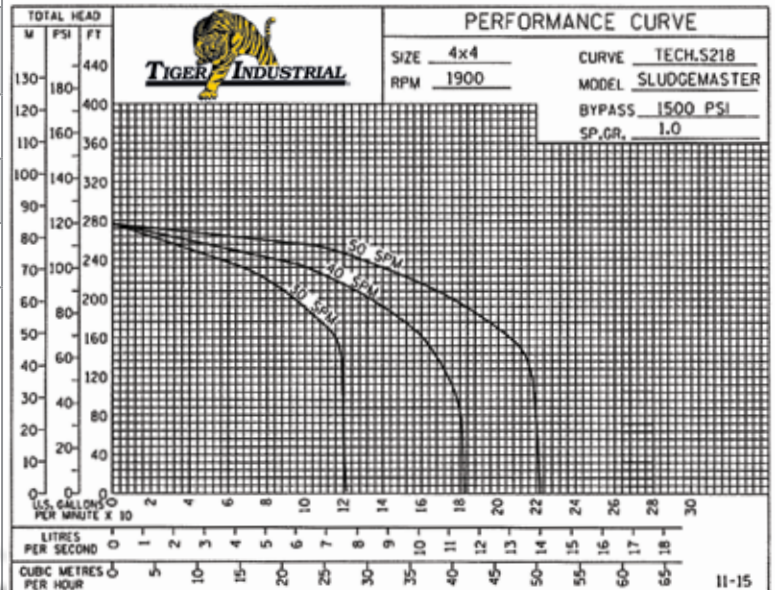
W-440		HP	260	320	380	440
		SPM	510	660	810	960
LINER SIZE	MAX PSI	GPS	GPM			
3	3327	.184	94	121	149	204
3 1/2	2816	.25	127	165	202	240
3 3/4	2468	.287	146	189	232	275
4	2169	.326	167	215	264	313
4 1/4	1917	.368	188	243	299	354
4 1/2	1710	.413	211	273	335	397



## SLUDGE MASTER 4" POPPET PUMP



Horsepower	35 HP
Fuel Tank Capacity	100 GAL
Max Flow	220 GPM @ 46' TDH/20 PSI
Max TDH	280' TDH/121 PSI @ 30 GPM
BEP	160 GPM @ 170' TDH/74 PSI





# PUMPS

## TP5-5000 HYDROSTATIC TEST PUMP



<b>Horsepower</b>	25 HP
<b>Fuel Tank Capacity</b>	20 GAL
<b>Max Flow</b>	4.7 GPM
<b>Max Pressure</b>	5000 PSI
<b>L x W x H</b>	55.5" x 55.5" x 49"
<b>Weight</b>	??? LBS

The TP5-5000 pump is unitized with a Kubota Diesel engine.

- Cat Model 700DSG118 Triplex Pump
- .551" Plunger, .945" Stroke
- .0026 Gallons Per Stroke
- Fluid End Working Pressure 5,000 PSI Max
- Skid Mounted with 75 Gallon Water Tank
- 1/2" Suction ; 3/8" Discharge Connections
- Available with Optional Stroke Counter

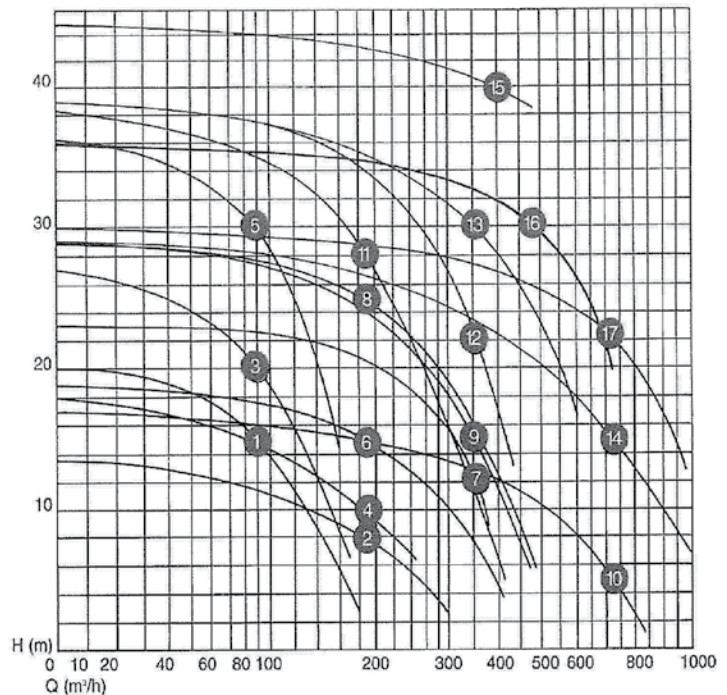


## 8" ELECTRIC SLUDGE / DREDGE PUMP (TOYO DP 50 B-4)

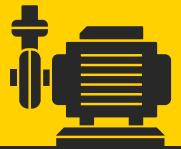


<b>Horsepower</b>	50 HP
<b>Fuel Tank Capacity</b>	N/A
<b>Max Flow</b>	2,000 GPM @ 17' TDH / 7 PSI
<b>Max TDH</b>	92' TDH / 40 PSI @ 130 GPM
<b>BEP</b>	1210 GPM @ 65' TDH / 28 PSI

**Performance curves**



# PUMPS



## COKE CUTTING PUMPS & SERVICES



<b>Horsepower</b>	2500 HP
<b>Fuel Tank Capacity</b>	380 GAL
<b>Max Flow</b>	23 BBL
<b>Max TDH</b>	4242
<b>BEP</b>	10BPM @ 4242' TDH / 9800 PSI

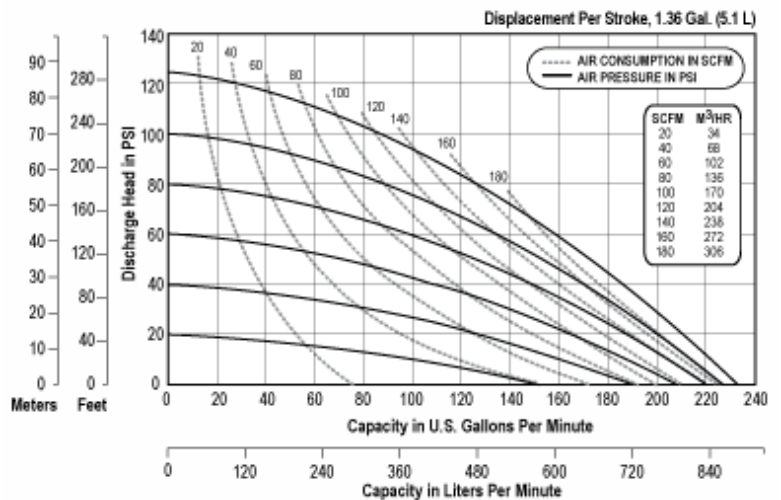
The Tiger Coke Cutting Pump is designed and built to withstand the harsh environments of hydraulic fracturing in oil and gas fields around the world. The unit consists of a high horsepower engine, high ambient radiator, transmission and high pressure positive displacement quintuplex pump and can be operated from the local control panel or by remote control. Contact us today to set up at no cost on site assessment of your facility and equipment.



## 3" AIR DIAPHRAGM PUMP



<b>Horsepower</b>	N/A- Air
<b>Fuel Tank Capacity</b>	N/A
<b>Max Flow</b>	240 GPM @ 10 PSI
<b>Max TDH</b>	120 PSI @ 20 GPM
<b>BEP</b>	N/A



# DEPENDABLE



## GETTING IT DONE RIGHT

### HIGHEST QUALITY & PERFORMANCE

When it comes to washers & cleaners, Tiger Industrial keeps a large diverse fleet of pressure washers, steam cleaners and hydroblasters prepped for immediate deployment.

Our team of experts will help you select the right type of equipment for the job. Additionally, we can readily verify which pieces of equipment you are currently renting, to help you better plan for upcoming projects.

#### PRESSURE WASHERS AND HYDROBLASTERS

- 3,500 to 40,000 psi
- Air-operated screen cleaners
- Hot water up to 5,000 psi
- Diesel and electric
- Explosion-proof
- Steam generators for de-icing and de-gassing

# HP CLEANING UNITS



## HEATED MYERS PUMP



L x W x H	19'x 8'x 7'
Weight	8,250 LBS
Fuel Capacity	30 GAL
Water Capacity	500 GAL
Run Time	4 HRS
Temperature	170° Fahrenheit
GPM	30 GPM & 60 GPM
Pressure	2,500 PSI
Hose Length	300' ON THE REEL
Trailer Ball	2 5/16"

### OPTIONAL ACCESSORIES

- Extended Length Gun
- Additional Tip Sizes
- Turbo Gun
- Wash Heights to 35'



## MYERS JETTER TP50-3000 HYDROSTATIC TEST PUMP



Skid Mount L x W x H	54" x 48" x 50"
Trailer Mnt L x W x H	19'x 8'x6'
Weight	8,000 LBS
Fuel Capacity	36 GAL
Water Capacity	325 GAL
Run Time	4 HRS
Temperature	160° Fahrenheit
Trailer Ball	2" OR 2 5/16"
GPM	6 GPM
Engine	25 HP Kubota Diesel



## JETTER PUMP



L x W x H	19' x 8' x 7'
Weight	6,500 LBS
Fuel Capacity	30 GAL
Water Capacity	500 GAL
Run Time	6 HRS
GPM	30 GPM & 60 GPM
Pressure	2,500 PSI
Hose Length	300'
Trailer Ball	2 5/16"

### OPTIONAL ACCESSORIES

- Extended Length Gun
- Additional Tip Sizes
- Turbo Gun
- Wash Heights to 35'





# HP CLEANING UNITS

## 150 GPM BEAN PUMP



L x W x H	
Weight	
Fuel Capacity	
Water Capacity	
Run Time	
Temperature	
GPM	
Pressure	
Hose Length	
Trailer Ball	

### OPTIONAL ACCESSORIES

- Extended Length Gun
- Additional Tip Sizes
- Turbo Gun
- Wash Heights to 35'



## 300 GPM BEAN PUMP



Skid Mount L x W x H	54" x 48" x 50"
Trailer Mnt L x W x H	19' x 8' x 6'
Weight	8,000 LBS
Fuel Capacity	36 GAL
Water Capacity	325 GAL
Run Time	4 HRS
Temperature	160° Fahrenheit
Trailer Ball	2" OR 2 5/16"
GPM	6 GPM
Engine	25 HP Kubota Diesel



## 10K PSI LOW VOLUME HYDROBLASTER



(L x W x H)	104" x 60" x 60"
Horsepower	85 HP
Fuel Capacity	12 GAL
Shipping Weight	3,650 LBS
Max PSI	10,000 PSI

### OPTIONAL ACCESSORIES

- Foot Pedal with Flex Lance available



# HP CLEANING UNITS



## HYDROBLASTER OPTIONAL ACCESSORIES



- Turbo Nozzle
- Foot Pedal
- Double Trigger Gun
- 3D Nozzle

### 10K PSI @ 52 GPM

Weight	9,450 LBS
Fuel Cap	250 GAL
Run Time	22 HRS
Water Inlet	1" Crow Foot
Water Outlet	13 MM MP

#### OPTIONAL ACCESSORIES

- Turbo Nozzle**
- 1/2" X 50' Blast Hose

### 20K PSI @ 24 GPM

Weight	9,450 LBS
Fuel Cap	250 GAL
Run Time	22 HRS
Water Inlet	1" Crow Foot
Water Outlet	13 MM MP

#### OPTIONAL ACCESSORIES

- Turbo Nozzle**
- 3 MM x 50' Blast Hose

### 40K PSI @ 11 GPM

Weight	9,450 LBS
Fuel Cap	250 GAL
Run Time	22 HRS
Water Inlet	1" Crow Foot
Water Outlet	8 MM MP

#### OPTIONAL ACCESSORIES

- Turbo Nozzle**
- 5 Mm (or 8 MM) x 50' Blast Hose



## 3,000 PSI DIESEL PRESSURE WASHER



L x W x H 47" x 32" x 35"

Weight 375 LBS

#### OPTIONAL ACCESSORIES

- Emergency Shut-off
- Chemical Suction Tube
- Spark Arrester Muffler
- Drip Pan
- Easy Roll Wheels
- Galvanized Cage
- 4 GAL per Minute





# HP CLEANING UNITS

## 4,000 PSI TRAILER MOUNT HOT WATER PRESSURE WASHER



Skid Mount L x W x H	54" x 48" x 50"
Trailer Mount L x W x H	19' x 8' x 6'
Weight	6,500 LBS
Fuel Capacity	18 GAL
Water Capacity	325 GAL
Run Time	4 HRS
Temperature	160° Fahrenheit
Trailer Ball	2" OR 2 5/16"
GPM	6 GPM
Engine	25 HP Kubota Diesel



## 4,000 PSI TRAILER MOUNT HOT DOUBLE WATER PRESSURE WASHER



Skid Mount L x W x H	54" x 48" x 50"
Trailer Mnt L x W x H	19' x 8' x 6'
Weight	8,000 LBS
Fuel Capacity	36 GAL
Water Capacity	325 GAL
Run Time	4 HRS
Temperature	160° Fahrenheit
Trailer Ball	2" OR 2 5/16"
GPM	6 GPM
Engine	25 HP Kubota Diesel





## 12' ROAD CROSSING MANIFOLD



L x W x H	12' x 48" x 6"
Inlet/Outlet	12" or 8" 150# Flange
Max Pressure	75 PSI

## 24' ROAD CROSSING MANIFOLD

L x W x H	24' x 48" x 6"
Inlet/Outlet	12" or 8" 150# Flange
Max Pressure	75 PSI



## CONTAINMENT BERM



L x W x H	6' x 6' x 12"
L x W x H	12' x 12' x 12"
L x W x H	25' x 12' x 12"
L x W x H	50' x 12' x 12"

### OPTIONAL ACCESSORIES

- Pressure Washer
- Felt Pad
- Duck Bill Vac Attachment





# DEPENDABLE

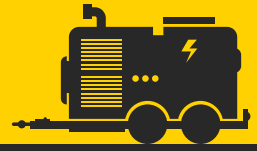
## HIGHEST SERVICE STANDARDS QUALITY, SERVICE & URGENT RESPONSE

At Tiger Industrial, we run strict quality-control programs on all of our equipment. We meet or exceed the highest safety standards. Tiger maintains an extensive backup fleet so we are ready to respond to your every need at a moment's notice.

### GENERATORS | LIGHT TOWERS | FUEL TANKS | PRESSURE WASHERS | BLAST RATED BUILDINGS

- 25 kVA Portable Generators
- 45 kVA Portable Generators
- 85 kVA Portable Generators
- 125 kVA Portable Generators
- 150 kVA Portable Generators
- 220 kVA Portable Generators
- 300 kVA Portable Generators
- 462 kVA Portable Generators
- LED Portable Light Towers
- 528 GAL Double Wall Fuel Tanks
- Pressure Washers
- 8' x 20' Blast Rated Buildings

# GENERATORS



## 25 KVA PORTABLE GENERATOR



L x W x H	10' x 5' x 5'		
Standby Output	22 KW		
Prime Output	20 KW		
Weight	2,200 LBS		
Fuel Cap	42 GAL		
Run Time	30 HRS		
AMP DRAW		FUEL CONSUMPTION	
1PH 120V	55 AMPS	Full Load	1.65 GPH
1PH 240V	27 AMPS	3/4 Load	1.3 GPH
3PH 240V	60 AMPS	1/2 Load	0.9 GPH
3PH 480V	30 AMPS		



## 45 KVA PORTABLE GENERATOR



L x W x H	12' x 6' x 8'		
Standby Output	37 KW		
Prime Output	36 KW		
Weight	2,940 LBS		
Fuel Cap	30 GAL		
Run Time	22 HRS		
AMP DRAW		FUEL CONSUMPTION	
1PH 120V	100 AMPS	Full Load	3.1 GPH
1PH 240V	50 AMPS	3/4 Load	2.2 GPH
3PH 240V	108 AMPS	1/2 Load	1.6 GPH
3PH 480V	54 AMPS		

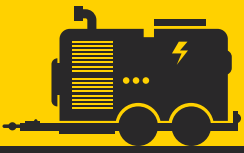


## 85 KVA PORTABLE GENERATOR



L x W x H	12' x 6' x 8'		
Standby Output	70 KW		
Prime Output	66 KW		
Weight	5,000 LBS		
Fuel Cap	127 GAL		
Run Time	22 HRS		
AMP DRAW		FUEL CONSUMPTION	
1PH 120V	188 AMPS	Full Load	5.5 GPH
1PH 240V	95 AMPS	3/4 Load	3.8 GPH
3PH 240V	204 AMPS	1/2 Load	2.6 GPH
3PH 480V	102 AMPS		





# GENERATORS

## 125 KVA PORTABLE GENERATOR



L x W x H	12' x 6' x 8'		
Standby Output	110 KW		
Prime Output	100 KW		
Weight	6,900 LBS		
Fuel Cap	169 GAL		
Run Time	24 HRS		
<b>AMP DRAW</b>		<b>FUEL CONSUMPTION</b>	
1PH 120V	277 AMPS	Full Load	7.3 GPH
1PH 240V	139 AMPS	3/4 Load	5.7 GPH
3PH 240V	300 AMPS	1/2 Load	4.0 GPH
3PH 480V	150 AMPS		



## 150 KVA PORTABLE GENERATOR



L x W x H	12' x 6' x 8'		
Standby Output	132 KW		
Prime Output	120 KW		
Weight	9,278 LBS		
Fuel Cap	214 GAL		
Run Time	25 HRS		
<b>AMP DRAW</b>		<b>FUEL CONSUMPTION</b>	
1PH 120V	333 AMPS	Full Load	8.4 GPH
1PH 240V	166 AMPS	3/4 Load	6.5 GPH
3PH 240V	361 AMPS	1/2 Load	4.9 GPH
3PH 480V	180 AMPS		



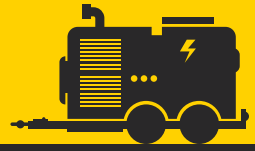
## 220 KVA PORTABLE GENERATOR



L x W x H	16' x 6' x 8'		
Standby Output	194 KW		
Prime Output	176 KW		
Weight	6,900 LBS		
Fuel Cap	214 GAL		
Run Time	21 HRS		
<b>AMP DRAW</b>		<b>FUEL CONSUMPTION</b>	
1PH 120V	488 AMPS	Full Load	13.6 GPH
1PH 240V	244 AMPS	3/4 Load	10.4 GPH
3PH 240V	529 AMPS	1/2 Load	7.7 GPH
3PH 480V	264 AMPS		



# GENERATORS



## 300 KVA PORTABLE GENERATOR



<b>L x W x H</b>	16' x 6' x 11'		
<b>Standby Output</b>	264 KW		
<b>Prime Output</b>	240 KW		
<b>Weight</b>	13,000 LBS		
<b>Fuel Cap</b>	300 GAL		
<b>Run Time</b>	21 HRS		
<b>AMP DRAW</b>		<b>FUEL CONSUMPTION</b>	
<b>1PH 120V</b>	667 AMPS	<b>Full Load</b>	15 GPH
<b>1PH 240V</b>	333 AMPS	<b>3/4 Load</b>	14 GPH
<b>3PH 240V</b>	722 AMPS	<b>1/2 Load</b>	11 GPH
<b>3PH 480V</b>	361 AMPS		



## 450 KVA PORTABLE LNG GENERATOR



<b>L x W x H</b>	29' x 8'6" x 11'10"		
<b>Standby Output</b>	400 kW		
<b>Prime Output</b>	360 kW		
<b>Weight</b>	19,833 LBS		
<b>NG FUEL CONSUMPTION (MCF/DAY)</b>		<b>PROPANE FUEL CONSUMPTION (GAL/DAY)</b>	
<b>Full Load</b>	101.54	<b>Full Load</b>	936.90
<b>3/4 Load</b>	79.15	<b>3/4 Load</b>	798.59
<b>1/2 Load</b>	55.61	<b>1/2 Load</b>	537.93
<b>1/4 Load</b>	33.91	<b>1/4 Load</b>	340.44



## I LINE DISTRIBUTION PANEL



<b>L x W x H</b>	31.5" x 30.5" x 35.442"
<b>Input</b>	800A (2X) 400A, Cam Type, 16 Series, Straight, Panel Mount
<b>Output</b>	(4) - Cam Type, 16 Series, 100 - 250A, Three Phase (H, H, H, N, G), 600Y/347 Vac, Panel Mount (2) - Cam Type, 16 Series, 160 - 400A, Three Phase (H, H, H, N, G), 600Y/347 Vac, Panel Mount ALL OUTPUTS PROTECTED BY BRANCH CIRCUIT BREAKERS
<b>Rating</b>	Outdoor - 800A, Three Phase (H, H, H, N, G), 600Y/347 VAC





# LIGHT TOWERS

## 4,000 WATT PORTABLE LIGHT TOWER



<b>L x W x H</b>	173" x 50" x 70"
<b>Max Height</b>	32'
<b>Weight</b>	1,644 LBS
<b>Fuel Cap</b>	30 GAL
<b>Run Time</b>	48 HR
<b>Lumens</b>	440,000
<b>Light Coverage</b>	5-7 Acres
<b>Sound Level</b>	66 DB



## LED PORTABLE LIGHT TOWER



<b>L x W x H</b>	716" x 98" x 348"
<b>Weight</b>	1,720 LBS
<b>Fuel Cap</b>	30 GAL
<b>Run Time</b>	50 HR
<b>Lumens</b>	542,000
<b>Stabilizer</b>	Four-Point Outrigger System

- SHO-HD® Lamp Fixture – 4 Metal Halide Lamps Only
- SLS™ Sequenced Light System™
- Gull-Wing Style Doors – Reaction injection molded doors providing strength and corrosion resistance
- Forklift Pockets and Lifting Eye
- 30 Gallon Polyethylene Fuel Tank
- Four-Point Outrigger System
- GPS Ready
- 59° Fixture Rotation
- 55 MPH Operating Wind Speed Rating





# ENGINEERED

## TYPES OF BUILDINGS

### STANDARD

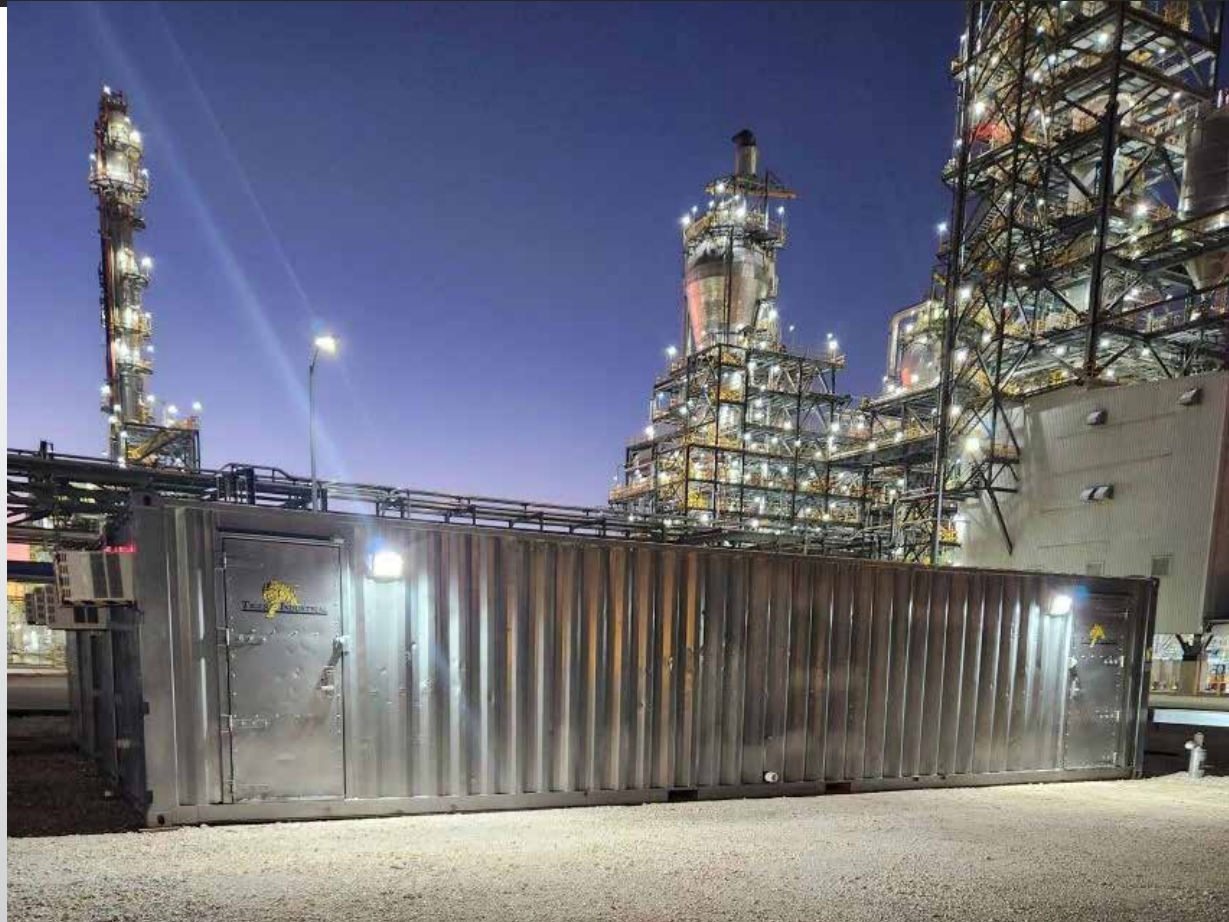
#### PRODUCT LINES:

#### 6.3 PSI, 8 PSI & 10 PSI

- 12' x 40'
- 8' x 40'
- 8' x 20'

Tiger will customize the interior of any building to provide the specific layout(s) that your company needs, including:

- Duplex
- Triplex
- Cool Down Buildings
- Bathroom Units
- Men's Multi-Bathroom
- Women's Multi-Bathroom
- Single Bathroom
- Shower Trailers
- Locker Rooms
- Bathroom & Kitchenettes
- Decon Units
- Tool Rooms
- Office Units
- Guard Shacks
- Secure Storage Areas
- Bunkhouses
- Safety Compound
- Living Quarters
- Laundry Units
- Medical Facilities
- Pharmacies
- Outage Housing
- Hurricane Shelters



## THE TIGER ADVANTAGE

### SAFETY, QUALITY, DELIVERY & SERVICE

#### SAFETY:

- Designed for occupant safety
- Designed to VCE duration requirements
- Design review performed by Qualified Blast Design Engineers

#### QUALITY:

- Documented welding procedures
- Material traceability
- 3rd party QC inspection reports

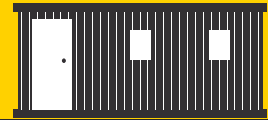
#### DELIVERY:

- Manufacturing capacity to meet large project schedules
- Rapid deployment
- International logistics experience
- Able to deliver all building sizes with either flatbed or rollback

#### SERVICE:

- 24-hour "on call" customer service
- Staff service technicians
- Service centers

# BUILDINGS



## 12' X 40' BLAST RESISTANT BUILDING



SIZE	PSI RATING	DURATION	RESPONSE LEVEL	WEIGHT
12' x 40' x 10'6"	8.0 PSI	200 MS	MEDIUM	52,000 LBS
12' x 40' x 10'6"	10.0 PSI	200 MS	MEDIUM	55,000 LBS
<b>Lifting Lugs</b>	(4)			
<b>HVAC</b>	(1) Central A/C. Class I Div II			
<b>Electrical</b>	(1) 240V 100A Single Phase Class I Div II External Electrical Connection			
<b>Doors/Windows *</b>	<b>(2) Blast Rated Doors</b> <b>(2) Blast Rated Windows</b>			
<b>Fire Protection</b>	(2) Smoke Detectors & (1) Fire Extinguisher			
<b>Lights</b>	(8) 4' Fual Fluorescents, (2) External Explosion Proof and (2) Emergency Exits			
<b>Outlets/Ports</b>	(10) Electrical, (9) Data Ports & (9) Phone Ports			

## 8' X 40' BLAST RESISTANT BUILDING



SIZE	PSI RATING	DURATION	RESPONSE LEVEL	WEIGHT
8' x 40' x 8'6"	6.3 PSI	800 MS	MEDIUM	22,000 LBS
8' x 40' x 8'6"	8.0 PSI	42.5 MS	MEDIUM	22,000 LBS
<b>Lifting Lugs</b>	(4)			
<b>HVAC</b>	(2) Units Non-Classified Electrical			
<b>Electrical</b>	(1) 240 V 100 A Single Phase Non-Classified			
<b>Doors/Windows *</b>	<b>(2) Blast Rated Doors</b> <b>(2) Blast Rated Windows</b>			
<b>Fire Protection</b>	(2) Smoke Detectors & (1) Fire Extinguisher			
<b>Lights</b>	(6) 4' Dual Fluorescents & (2) Emergency Exits			
<b>Outlets/Ports</b>	(6) Electrical Duplex Outlets			
<b>Conversions</b>	Tool Room, Safety Cool Down Building, Decon Unit, or Multi-bath Building			



# BUILDINGS

## MULTI-PLEX BUILDINGS



SIZE	PSI RATING	DURATION	RESPONSE LEVEL	WEIGHT
8' x 40' x 8'6"	8.0 PSI	42.5 MS	MEDIUM	15,000 LBS / SECTION
<b>Lifting Lugs</b>	(4)			
<b>HVAC</b>	(2) Units Non-Classified Electrical			
<b>Electrical</b>	(1) 240 V 100 A Single Phase Non-Classified			
<b>Doors/Windows *</b>	<b>(2) Blast Rated Doors On Each Endcap</b>			
<b>Fire Protection</b>	Smoke Detectors & Fire Extinguisher			
<b>Lights</b>	LED Lights, External Explosion Lights, Emergency Exit Sign(s)			
<b>Outlets/Ports</b>	(20) Electrical, (18) Data & (18) Phone Ports			



## 8' X 20' BLAST RESISTANT BUILDING/COOL DOWN BUILDING



SIZE	PSI RATING	DURATION	RESPONSE LEVEL	WEIGHT
8' x 20' x 8'6"	6.3 PSI	800 MS	MEDIUM	15,000 LBS
8' x 20' x 8'6"	8.0 PSI	42.5 MS	MEDIUM	15,000 LBS
<b>Lifting Lugs</b>	(4)			
<b>HVAC</b>	(1) HVAC – Unit, Non-Classified Electrical Insulated			
<b>Electrical</b>	(1) 240 V, 100 A, Single Phase, Non-Classified Electrical			
<b>Doors/Windows *</b>	<b>(2) Blast Rated Doors/ (1) Blast Rated Windows</b>			
<b>Fire Protection</b>	(2) Smoke Detectors & (1) Fire Extinguisher			
<b>Lights</b>	(2) Emergency Exit Lights & (3) 4' Long Dual Bulb Fluorescent Lights			
<b>Outlets/Ports</b>	(3) Duplex Electrical Outlets/ (2) Data Ports & (2) Phone Ports			





## **Tiger is the ONLY rental service provider that has blast rated windows as a standard in all building sizes.**

Blast-resistant windows are a key factor in mitigating unnecessary injuries in the event of an explosion or severe weather.

For every day use, blast-resistant windows provide natural light which can improve your health, attitude and mindset resulting in a more productive workplace.

With Tiger, you get protection, productivity and reliability. Put YOUR safety first with Tiger Industrial's blast resistant buildings!



# FLEXIBILITY

## FUEL PODS, TANKS & SKIPS

**DURABLE, VERSATILE & LONG LASTING**

No matter what your project requirements are, Tiger has the right equipment for the job. Our fleet of fuel pods, tanks and skips are built to last. Our units are constructed of the toughest materials. Plus there are ample options for specialized uses, such as additional tie downs, saddle support for containing round objects and side door access for easy loading on some baskets. Our units meet industry standards for labeling details such as load capability. With the flexibility in our fleet, you are able to source exactly the right units for every job you need to accomplish.

# TANKS & HOPPERS



## 528 GALLON DOUBLE WALL FUEL POD



<b>L x W x H</b>	87" x 46" x 52"
<b>Containment</b>	110% Secondary Containment
<b>Capacity</b>	1,825 LBS Empty/5,574 LBS Full

- Internal Baffles
- Secure Hose Access
- Full Load Lifting Eyes
- Tie Down Points
- Direct to Machinery Fuel Ports

### OPTIONAL ACCESSORIES

- 16' Tandem Trailer
- 110V Fuel Pump
- Fuel Pump - 12V Fuel Pump & Solar Panel



## 550 GAL STAINLESS STEEL TRANSPORT TANK



<b>L x W x H</b>	56" x 50" x 75"
<b>Gross Weight</b>	9,385 LBS
<b>Tare Weight</b>	628 LBS

### OPTIONAL ACCESSORIES

- 4 Point Sling



## 2 & 3 YARD TILT HOPPERS



<b>L x W x H</b>	70.5" x 63.5" x 61"
<b>Gross Weight</b>	10,000 LBS
<b>Tare Weight</b>	1,542 LBS
<b>Max Cap</b>	3 CU YD





# DURABLE

## BUILT FOR SEVERE CONDITIONS FROM STANDARD UNITS TO THE MORE UNCOMMON VARIETIES

At Tiger Industrial Rentals delivers the baskets and waste skips you need efficiently and cost-effectively. We carry the broadest range of units, so you can carry virtually any cargo to your operations.

### CARGO CARRYING UNITS

- 6' x 12' Slant Nose Skip Pans
- 4' x 12' Scaffold Baskets
- 4' x 8' Baskets
- 6' x 12' Baskets

# BASKETS & SKIPS



## 6' X 12' SLANT NOSE SKIP PAN



DIMENSIONS	L X W X H	
External (MM)	3,776 x 1,839 x 1,554	
External (FT)	12'4" x 6' x 5'1"	
Internal (MM)	3,680 x 1,700 x 1,300	
Internal (FT)	12'1" x 5'7" x 4'3"	
WEIGHT	KGS	LBS
Tare	1,600	3,527
Payload	5,900	13,007
Max Gross Weight	7,500	16,534



## 4' X 8' BASKET



DIMENSIONS	L X W X H	
External (MM)	2,438 x 1,270 x 1,130	
External (FT)	8' x 4'2" x 3'8"	
Internal (MM)	2,273 x 1,080 x 914	
Internal (FT)	7'5" x 3'7" x 3'	
WEIGHT	KGS	LBS
Tare	748	1,650
Payload	5,216	11,500
Max Gross Weight	5,964	13,150



## 4' X 12' SCAFFOLD BASKET



DIMENSIONS	L X W X H	
External (MM)	3,904 x 1,307 x 1,200	
External (FT)	12'10" x 4'3" x 3'11"	
Internal (MM)	3,561 x 1,082 x 924	
Internal (FT)	11'8" x 3'6" x 3'	
WEIGHT	KGS	LBS
Tare	1,810	3,990
Payload	6,718	14,810
Max Gross Weight	8,528	18,800



## 6' X 12' BASKET



DIMENSIONS	L X W X H	
External (MM)	3,710 x 1,985 x 1,245	
External (FT)	12'2" x 6'6" x 4'1"	
Internal (MM)	3,510 x 1,655 x 895	
Internal (FT)	11'6" x 5'5" x 2'11"	
WEIGHT	KGS	LBS
Tare	1,720	3,792
Payload	6,220	13,713
Max Gross Weight	7,940	17,505





# HEAVY IRON

## TIGER RENTS HEAVY EQUIPMENT

### SOLVING YOUR CONSTRUCTION CHALLENGES

At Tiger, we understand that high-quality, performance machinery can improve your work site's safety standards, protect your company's bottom line and streamline your operations — that's why we offer appropriate and hassle-free solutions for commercial construction requirements. We offer a line of quality heavy iron equipment — with brands widely recognized and appreciated for their ongoing commitment to manufacturing excellence and superior construction equipment solutions.

#### HEAVY IRON:

- 60' Manlift (Aerial Lift Equipment)
- 100K Extended Reach Forklift (Telehandlers)



## 600 SERIES TELESCOPIC BOOM LIFTS



ENGINE	
Gross Power (Basic)	83 kW / 111.3 hp
Maximum Torque (Standard)	450 Nm at 1400 rpm 332 lb-ft
Bore	3.9 in
Stroke	4.3 in
Displacement	207 .5 cu in
WEIGHT	
Operating Weight	27,125 lb
OPERATING SPECIFICATIONS	
Rated Load Capacity	9,000 lb
Maximum Lift Height	43 ft
Maximum Forward Reach	31.4 ft
Frame Leveling	10°
Top Travel Speed	20.3 mph
Capacity at Max Height (o/r Up)	7,000 lb
Capacity at Max Height (o/r Down)	7,000 lb
Capacity at Max Reach (o/r Up)	1,100 lb
Capacity at Max Reach (o/r Down)	2,700 lb
Turning Radius over Tires	12 ft
Drawbar Pull (Loaded)	26,000 lb

HYDRAULIC SYSTEM	
Variable displacement load sensing axial piston pump	
<ul style="list-style-type: none"> <li>Auxiliary Hydraulic Circuit used for all attachments equipped with cylinders or other hydraulic components. Consists of valves, controls and hydraulic lines.</li> </ul>	
SERVICE REFILL CAPACITIES	
Fuel Tank	318 gal
Hydraulic System	47 gal
TIRES	
Standard	370/75-28 Duraforce MT
TRANSMISSION SPEEDS	
Forward / Reverse	4 speed / 3 speed
BOOM PERFORMANCE	
Boom Up / Down	13.9 sec / 10.2 sec
Tele In / Out	16.8 sec / 14.9 sec
AXLES	
<ul style="list-style-type: none"> <li>Trunnion mounted planetary 55 degree steer axles.</li> <li>Integral steer cylinder.</li> <li>High bias limited slip differential on front axle.</li> </ul>	
BRAKES	
<ul style="list-style-type: none"> <li>Service Brakes are inboard wet disc brakes on front and rear axles.</li> <li>Parking Brakes are spring-applied hydraulic release on front axle. Light on dash indicates when brake is on.</li> </ul>	





# HEAVY IRON

## 600 SERIES TELESCOPIC BOOM LIFTS



### PERFORMANCE

Platform Height	59 ft 8 in.
Horizontal Outreach	50 ft 2 in.
Swing	360° Continuous
Platform Capacity Restricted/Unrestricted	1,000 lb/600 lb
Platform Rotator	160° Hydraulic
Weight	22,900 lb
Max. Ground Bearing Pressure	83 psi
Drive Speed 4WD	3.8 mph
Gradeability 4WD	45%
Tilt Cut Out	5°
Axle Oscillation	8 in.
Turning Radius, Inside/Outside 2WS	9 ft 7in./19 ft 4 in.
Turning Radius, Inside/Outside 4WS	5 ft 3 in./12 ft 8 in.

### STANDARD SPECIFICATIONS

Dual Fuel Engine Ford MSG425-DF	84 hp
Diesel Engine Deutz D2.9L4 Tier 4 Final	48.8 hp
Fuel Tank Capacity	31 gal

### HYDRAULIC SYSTEM

Capacity	34 gal
Auxiliary Power	12V DC

### TIRES

Standard	355/55D625 Foam Filled
----------	------------------------

### STANDARD FEATURES

- Oscillating Axle
- Hydraulic Platform Rotator
- 110V AC Receptacle in the Platform
- 5 Degree Tilt Alarm/Indicator Light
- Swing-Out Engine Tray
- 12V DC Auxiliary Power
- Hourmeter
- All Motion Alarm
- Proportional Controls
- Gull-Wing Hoods
- Platform Console Machine Status
- Light Panel\*
- Engine Distress Warning/Shutdown—
- Selectable via JLG Analyzer
- Lifting/Tie Down Lugs
- Load Sensing System

### ACCESSORIES & OPTIONS

- 36 x 72 in. (0.91 x 1.83 m) Platform
- Fall Arrest Platform
- Inward Swinging Gate
- Soft Touch System
- SkySense™
- Operators Tool Tray
- Tow Package
- 43.5 lb (19.7 kg) Propane Tank
- Cold Weather Start Kit1
- Hostile Environment Kit2
- Light Package
- Flashing Amber Beacon
- Arctic Package





  
**TIGER INDUSTRIAL**  
1-800-800-0047

010920  
388224673



## TIGER INDUSTRIAL LOCATIONS

### Beaumont, Texas

1313 Gulf Street  
Beaumont, TX 77701

### Baytown, Texas

7000 Decker Dr.  
Baytown, TX 77520

### Corpus Christi, Texas

8283 Leopard St.  
Corpus Christi TX 78409

### Dilley, Texas

13400 S. Interstate 35  
Dilley, TX 78017

### Odessa, Texas

13014 West County Road  
100, Odessa, TX 79765

### Victoria, Texas

11901 US Highway 59,  
N. Victoria, TX 77905

24/7 Dispatch: 888-866-0047 / 409-832-9336 / [TigerIndustrialRentals.com](http://TigerIndustrialRentals.com)



Scan to view Tiger's  
capabilities video >

