

DRAGON POWERGR26M

MOBILE GENSET



DRAGON

DRAGONPRODUCTS.COM

PARTS | MANUFACTURING | SERVICE >> WE'VE GOT YOU COVERED.



DRAGON PARTS HOTLINE >> 1.888.801.7778 | TOLL FREE >> 800.231.8198



DRAGON



A Rolls-Royce
Solution

DRAGON POWERGR26M FEATURES

COMPACT FOOTPRINT

- Mobile, remote sites
- Small footprint, tight spaces
- Low noise, urban ready
- Bridge legal for transport

MINIMUM SETUP

- Integrated drive package, no alignment required
- Quick start-up/shut-down, accurate & quick load/speed control
- High efficiency at variable loads and combined cycles (CHP)

BENEFITS

- 64,000 hours plus lifecycle with low OPEX
- Tough road conditions transportable
- Lower emissions compared to diesel
- 44% Electrical Efficiency

CONVENIENT MAINTENANCE

- Minimal cross-training required
- Aligned system maintenance, eliminating unnecessary downtime
- Fully integrated digital management system

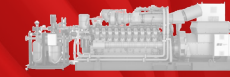
APPLICATIONS

- Oil & Gas Fields: Drilling, E-Frac,
- Production Facilities
- Back-up Power, Disaster Relief
- Stand-alone Microgrids
- Urban Power Applications



GENSET MODULE

- Acoustic enclosure rated 85 dBA
- Resilient mounting between engine alternator and baseframe
- Integrated air filtration & fire suppression systems



MTU GG20V4000D2

- Best-in-class power density
- Optimized for hot and humid environments



GENERATOR

- 600V, 60Hz, 3151 kVA 0.8 PF
- 96.8% efficiency
- Synchronous Gen
- Other frequencies and voltages available

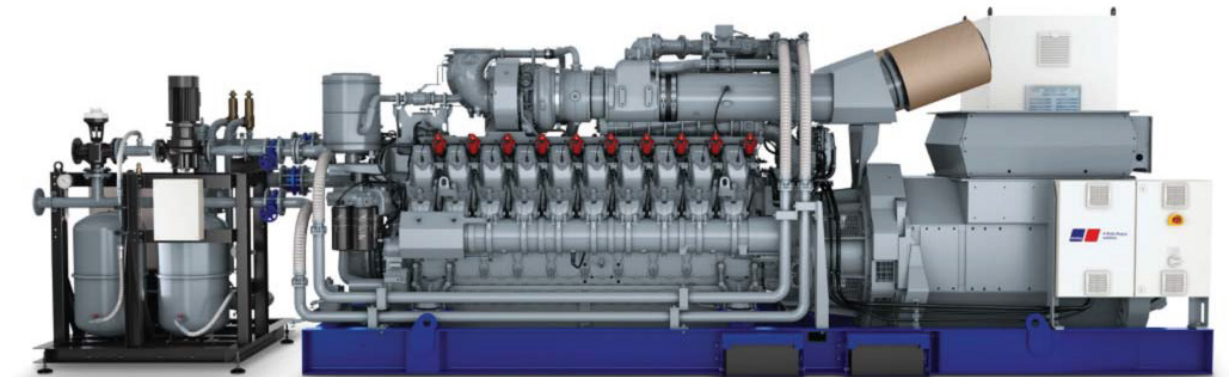
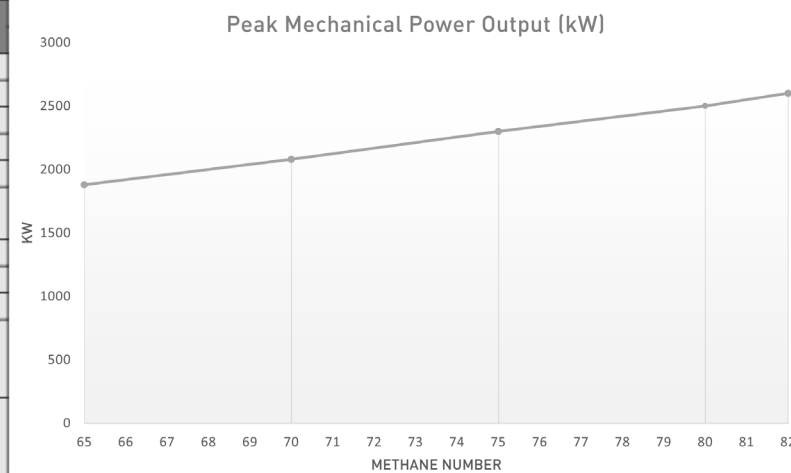


CONTROLS

- Visual display of all functional processes and controls
- Master and slave control capabilities
- Remote diagnostic capabilities

EMISSIONS ESTIMATION

MTU GG20V4000D2	100% load	75% load	50% load
NOx <1g/bhp-hr ; 4160V @ 60Hz			
Engine Power [kW]	2600	1955	1314
Electric Power [kW]	2504	1878	1252
Generator Efficiency	96.8%	96.6%	95.9%
Gear box efficiency	99.5%	99.4%	99.3%
Energy Input [kW] in according to ISO 3046-1	5813	4445	3075
Gas consumption [m3/h] based on attached gas composition	572	437	302
NOx Emissions [g/kWh]	1.34	1.34	1.34
CO Emissions [g/kWh]	< 2	< 2	< 2
CO2 Emissions [g/kWh]	446	454	467
Methane Emissions [g/kWh] based on atomic mass of CH4 (factor 0,72) and normalized to 1013,25 mbar and 273,15 °K	1.99	2.21	2.44
NMHC Emissions [g/kWh] based on atomic mass of CH2O (factor 1,34) and normalized to 1013,25 mbar and 273,15 °K	0.32	0.35	0.38



TRAILER DIMENSIONS

Length	59'
Height	13'- 6"
Width	9'